

For Research Use Only

Cyclin A2 Monoclonal antibody

Catalog Number: 66391-1-Ig

Featured Product

33 Publications



Basic Information

Catalog Number:

66391-1-Ig

Size:

150ul, Concentration: 1400 ug/ml by 890 Nanodrop and 1000 ug/ml by Bradford method using BSA as the standard;

Source:

Mouse

Isotype:

IgG2a

Immunogen Catalog Number:

AG12765

GenBank Accession Number:

BC104783

GeneID (NCBI):

890

UNIPROT ID:

P20248

Full Name:

cyclin A2

Calculated MW:

432 aa, 49 kDa

Observed MW:

52 kDa

Purification Method:

Protein A purification

CloneNo.:

1C6C11

Recommended Dilutions:

WB 1:2000-1:10000

IHC 1:1000-1:4000

IF/ICC 1:50-1:500

Applications

Tested Applications:

WB, IHC, IF/ICC, ELISA

Cited Applications:

WB, IHC, IF

Species Specificity:

human

Cited Species:

human, mouse, rat

Note-IHC: suggested antigen retrieval with TE buffer pH 9.0; (*) Alternatively, antigen retrieval may be performed with citrate buffer pH 6.0

Positive Controls:

WB : HepG2 cells, HeLa cells, HEK-293 cells, Jurkat cells, Raji cells

IHC : human tonsillitis tissue,

IF/ICC : HeLa cells, MCF-7 cells

Background Information

CCNA2 belongs to the highly conserved cyclin family, whose members are characterized by a dramatic periodicity in protein abundance through the cell cycle. Cyclins function as regulators of CDK kinases. Different cyclins exhibit distinct expression and degradation patterns which contribute to the temporal coordination of each mitotic event. In contrast to cyclin A1, which is present only in germ cells, this cyclin is expressed in all tissues tested. CCNA2 binds and activates CDC2 or CDK2 kinases, and thus promotes both cell cycle G1/S and G2/M transitions.

Notable Publications

Author	Pubmed ID	Journal	Application
Y Zhong	28869606	Oncogene	WB
Dianbao Zhang	33076708	Nutr Cancer	WB
Jingwen Tan	36208777	Chem Biol Interact	WB

Storage

Storage:

Store at -20°C. Stable for one year after shipment.

Storage Buffer:

PBS with 0.02% sodium azide and 50% glycerol pH 7.3.

Aliquoting is unnecessary for -20°C storage

*** 20ul sizes contain 0.1% BSA

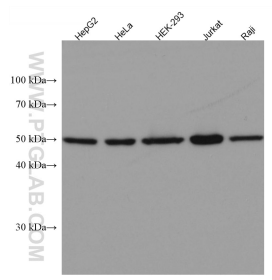
For technical support and original validation data for this product please contact:

T: 1 (888) 4PTGLAB (1-888-478-4522) (toll free in USA), or 1(312) 455-8498 (outside USA)

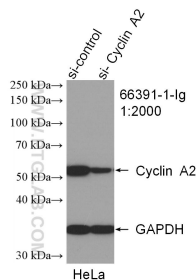
E: proteintech@ptglab.com
W: ptglab.com

This product is exclusively available under Proteintech Group brand and is not available to purchase from any other manufacturer.

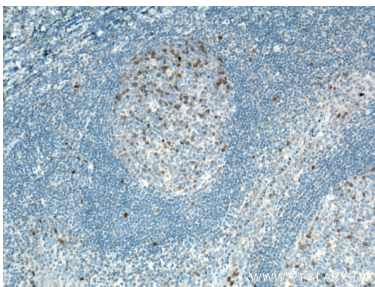
Selected Validation Data



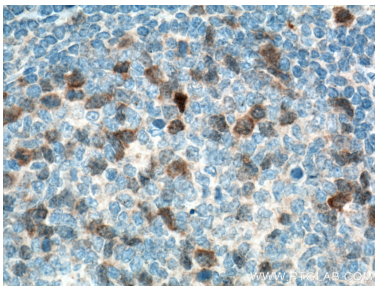
Various lysates were subjected to SDS PAGE followed by western blot with 66391-1-Ig (Cyclin A2 antibody) at dilution of 1:10000 incubated at room temperature for 1.5 hours.



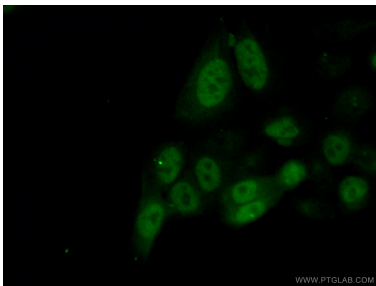
WB result of Cyclin A2 antibody (66391-1-Ig; 1:2000; incubated at room temperature for 1.5 hours) with sh-Control and sh-Cyclin A2 transfected HeLa cells.



Immunohistochemical analysis of paraffin-embedded human tonsillitis tissue slide using 66391-1-Ig (Cyclin A2 antibody) at dilution of 1:2000 (under 10x lens. Heat mediated antigen retrieval with Tris-EDTA buffer (pH 9.0).



Immunohistochemical analysis of paraffin-embedded human tonsillitis tissue slide using 66391-1-Ig (Cyclin A2 antibody) at dilution of 1:2000 (under 40x lens. Heat mediated antigen retrieval with Tris-EDTA buffer (pH 9.0).



Immunofluorescent analysis of (4% PFA) fixed HeLa cells using 66391-1-Ig(Cyclin A2 antibody) at dilution of 1:100 and Alexa Fluor 488-conjugated Goat Anti-Mouse IgG(H+L).