

For Research Use Only

CD36 Monoclonal antibody, PBS Only



Catalog Number: 66395-1-PBS

Basic Information

Catalog Number: 66395-1-PBS	GenBank Accession Number: BC008406	Purification Method: Protein A purification
Size: 100ug , Concentration: 1 mg/ml by Nanodrop;	GeneID (NCBI): 948	CloneNo.: 1A8C5
Source: Mouse	UNIPROT ID: P16671	
Isotype: IgG1	Full Name: CD36 molecule (thrombospondin receptor)	
Immunogen Catalog Number: AG13541	Calculated MW: 472 aa, 53 kDa	
	Observed MW: 88 kDa	

Applications

Tested Applications:
WB, IF, FC, IHC, ELISA

Species Specificity:
human

Background Information

CD36, also named as GP3B and GP4, is an 88-kDa membrane glycoprotein present on platelets, monocytes, erythroid precursors, endothelial cells, and several tumor cell lines. CD36 binds to collagen, thrombospondin, anionic phospholipids, long chain fatty acids and may function in the transport and/or as a regulator of fatty acid transport and oxidized LDL. CD36 may function as a cell adhesion molecule. It mediates cytoadherence of Plasmodium falciparum parasitized erythrocytes. Mutation of CD36 will cause platelet glycoprotein IV deficiency which known as CD36 deficiency. Genetic variations in CD36 are associated with susceptibility to coronary heart disease type 7 (CHDS7).

Storage

Storage:
Store at -20°C. Stable for one year after shipment.

Storage Buffer:
PBS only

Aliquoting is unnecessary for -20°C storage

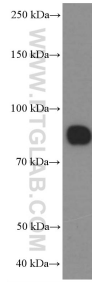
For technical support and original validation data for this product please contact:

T: 1 (888) 4PTGLAB (1-888-478-4522) (toll free in USA), or 1(312) 455-8498 (outside USA)

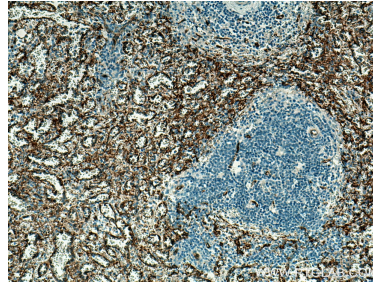
E: proteintech@ptglab.com
W: ptglab.com

This product is exclusively available under Proteintech Group brand and is not available to purchase from any other manufacturer.

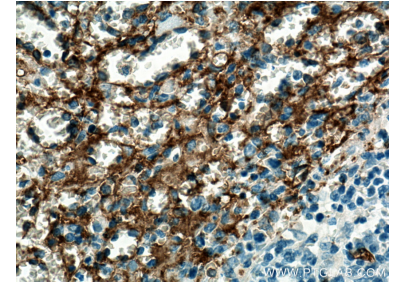
Selected Validation Data



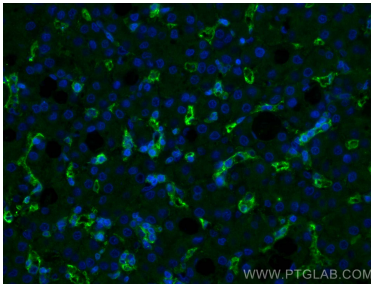
human heart tissue were subjected to SDS PAGE followed by western blot with 66395-1-Ig (CD36 Antibody) at dilution of 1:3000 incubated at room temperature for 1.5 hours. This data was developed using the same antibody clone with 66395-1-PBS in a different storage buffer formulation.



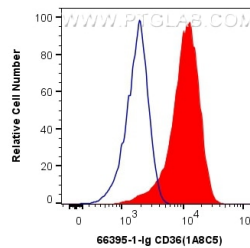
Immunohistochemical analysis of paraffin-embedded human spleen tissue slide using 66395-1-Ig (CD36 antibody) at dilution of 1:1000 (under 10x lens). Heat mediated antigen retrieval with Tris-EDTA buffer (pH 9.0). This data was developed using the same antibody clone with 66395-1-PBS in a different storage buffer formulation.



Immunohistochemical analysis of paraffin-embedded human spleen tissue slide using 66395-1-Ig (CD36 antibody) at dilution of 1:1000 (under 40x lens). Heat mediated antigen retrieval with Tris-EDTA buffer (pH 9.0). This data was developed using the same antibody clone with 66395-1-PBS in a different storage buffer formulation.



Immunofluorescent analysis of (4% PFA) fixed human liver cancer tissue using CD36 antibody (66395-1-Ig, Clone: 1A8C5) at dilution of 1:400 and CoraLite®488-Conjugated AffiniPure Goat Anti-Mouse IgG(H+L). This data was developed using the same antibody clone with 66395-1-PBS in a different storage buffer formulation.



1×10^6 THP-1 cells were surface stained with 0.4 ug Anti-Human CD36 (66395-1-Ig, Clone:1A8C5) and CoraLite®488-Conjugated AffiniPure Goat Anti-Mouse IgG(H+L) at dilution 1:1000 (red), or 0.4 ug Mouse IgG1 Isotype Control (MOPC-21) (65124-1-Ig, Clone: MOPC-21) (blue). Cells were not fixed. This data was developed using the same antibody clone with 66395-1-PBS in a different storage buffer formulation.