

For Research Use Only

Plasminogen Monoclonal antibody

Catalog Number: 66399-1-Ig **6 Publications**



Basic Information

| | | |
|--|--|--|
| Catalog Number: 66399-1-Ig | GenBank Accession Number: BC060513 | Purification Method: Protein G purification |
| Size: 150ul , Concentration: 1200 ug/ml by Nanodrop and 1000 ug/ml by Bradford method using BSA as the standard; | GeneID (NCBI): 5340 | CloneNo.: 1F6A11 |
| Source: Mouse | UNIPROT ID: P00747 | Recommended Dilutions: WB: 1:1000-1:4000 IHC: 1:50-1:500 IF-P: 1:200-1:800 IF/ICC: 1:400-1:1600 |
| Isotype: IgG1 | Full Name: plasminogen | |
| Immunogen Catalog Number: AG9938 | Calculated MW: 810 aa, 91 kDa | |
| | Observed MW: 105 kDa | |

Applications

| | |
|--|--|
| Tested Applications: WB, IHC, IF/ICC, IF-P, ELISA | Positive Controls: WB : human plasma tissue, IHC : human liver cancer tissue, IF-P : human liver cancer tissue, IF/ICC : HepG2 cells, |
| Cited Applications: WB, IHC | |
| Species Specificity: human | |
| Cited Species: human, mouse | |
| Note-IHC: suggested antigen retrieval with TE buffer pH 9.0; (*) Alternatively, antigen retrieval may be performed with citrate buffer pH 6.0 | |

Background Information

Plasminogen is a secreted blood zymogen that is activated by proteolysis and converted to plasmin and angiostatin. Plasminogen plays an important role in fibrinolysis as well as wound healing, cell migration, tissue modeling and angiogenesis. Plasminogen is synthesized in the liver, and it circulates in the blood, with a half-life of 2.2 days. Plasminogen is the precursor of plasmin, which lyses fibrin clots to fibrin degradation products (FDP) and D-dimer; the conversion to active protease is mediated by tissue-type (tPA) and urokinase-type (uPA) plasminogen activators. Defects in plasminogen are likely a cause of thrombophilia and ligneous conjunctivitis.

Notable Publications

| Author | Pubmed ID | Journal | Application |
|-------------|-----------|-------------------|-------------|
| Hui Shi | 36376702 | Clin Transl Oncol | WB,IHC |
| Weisi Lu | 35859222 | Angiogenesis | WB |
| Pingping Ma | 33410782 | Aging (Albany NY) | WB |

Storage

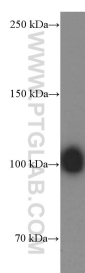
Storage:
Store at -20°C. Stable for one year after shipment.
Storage Buffer:
PBS with 0.02% sodium azide and 50% glycerol, pH7.3
Aliquoting is unnecessary for -20°C storage

*** 20ul sizes contain 0.1% BSA

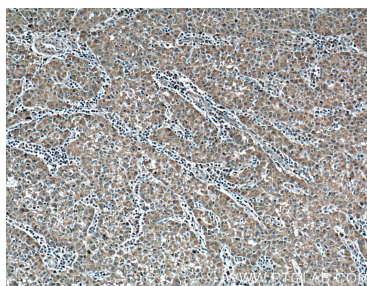
For technical support and original validation data for this product please contact:
T: 1 (888) 4PTGLAB (1-888-478-4522) (toll free in USA), or 1(312) 455-8498 (outside USA)
E: proteintech@ptglab.com
W: ptglab.com

This product is exclusively available under Proteintech Group brand and is not available to purchase from any other manufacturer.

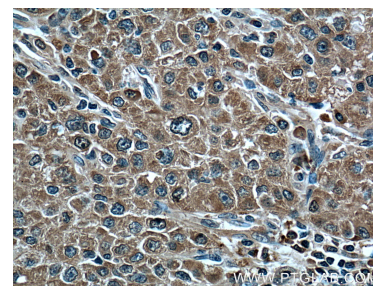
Selected Validation Data



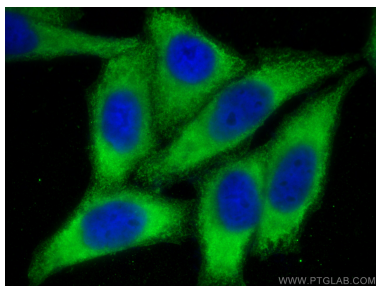
human plasma were subjected to SDS PAGE followed by western blot with 66399-1-Ig (PLG Antibody) at dilution of 1:2000 incubated at room temperature for 1.5 hours.



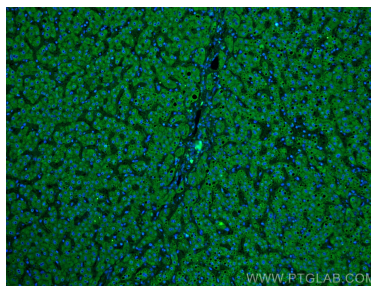
Immunohistochemical analysis of paraffin-embedded human liver cancer tissue slide using 66399-1-Ig (PLG Antibody) at dilution of 1:200 (under 10x lens). Heat mediated antigen retrieval with Tris-EDTA buffer (pH 9.0).



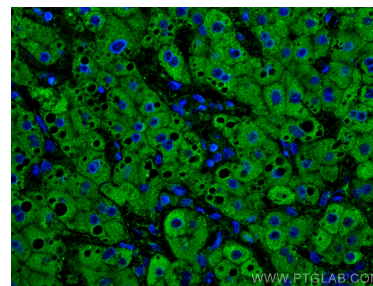
Immunohistochemical analysis of paraffin-embedded human liver cancer tissue slide using 66399-1-Ig (PLG Antibody) at dilution of 1:200 (under 40x lens). Heat mediated antigen retrieval with Tris-EDTA buffer (pH 9.0).



Immunofluorescent analysis of (-20°C Ethanol) fixed HepG2 cells using Plasminogen antibody (66399-1-Ig, Clone: 1F6A11) at dilution of 1:800 and Multi-rAb CoraLite® Plus 488-Goat Anti-Mouse Recombinant Secondary Antibody (H+L) (RGAM002).



Immunofluorescent analysis of (4% PFA) fixed human liver cancer tissue using Plasminogen antibody (66399-1-Ig, Clone: 1F6A11) at dilution of 1:400 and CoraLite® 488-Conjugated AffiniPure Goat Anti-Mouse IgG(H+L).



Immunofluorescent analysis of (4% PFA) fixed human liver cancer tissue using Plasminogen antibody (66399-1-Ig, Clone: 1F6A11) at dilution of 1:400 and CoraLite® 488-Conjugated AffiniPure Goat Anti-Mouse IgG(H+L).