

For Research Use Only

# GATA3 Monoclonal antibody, PBS Only

Catalog Number: 66400-1-PBS



## Basic Information

**Catalog Number:**

66400-1-PBS

**Size:**

100ug, Concentration: 1mg/ml by Nanodrop;

**Source:**

Mouse

**Isotype:**

IgG2a

**Immunogen Catalog Number:**

AG0174

**GenBank Accession Number:**

BC003070

**GeneID (NCBI):**

2625

**UNIPROT ID:**

P23771

**Full Name:**

GATA binding protein 3

**Calculated MW:**

443 aa, 48 kDa

**Observed MW:**

50 kDa

**Purification Method:**

Protein A purification

**CloneNo.:**

1B11A8

## Applications

**Tested Applications:**

WB, IHC, IF/ICC, IF-P, Indirect ELISA

**Species Specificity:**

human, mouse

## Background Information

GATA3 is a transcriptional factor that binds to the enhancer elements of all 4 T-cell antigen receptor genes. GATA3 is highly expressed in naive, freshly activated cells and Th2 lineage cells and thought to be necessary and sufficient for Th2 cytokine gene expression. GATA3 and TBET interfere with each other to regulate gene expression.

## Storage

**Storage:**

Store at -80°C.

**Storage Buffer:**

PBS Only

For technical support and original validation data for this product please contact:

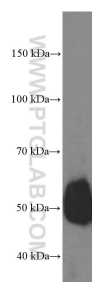
T: 1 (888) 4PTGLAB (1-888-478-4522) (toll free in USA), or 1(312) 455-8498 (outside USA)

E: [proteintech@ptglab.com](mailto:proteintech@ptglab.com)

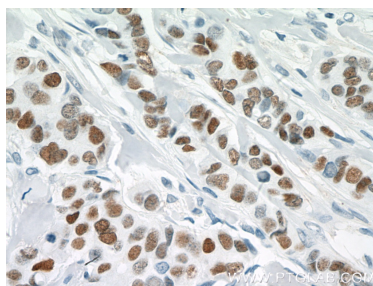
W: [ptglab.com](http://ptglab.com)

This product is exclusively available under Proteintech Group brand and is not available to purchase from any other manufacturer.

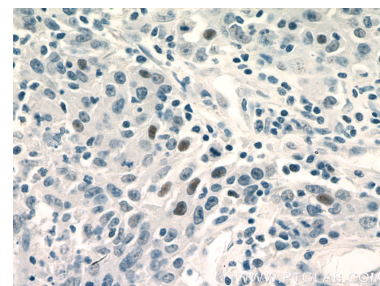
## Selected Validation Data



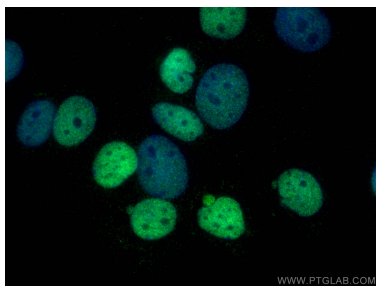
MCF-7 cells were subjected to SDS PAGE followed by western blot with 66400-1-Ig (GATA3 Antibody) at dilution of 1:3000 incubated at room temperature for 1.5 hours. This data was developed using the same antibody clone with 66400-1-PBS in a different storage buffer formulation.



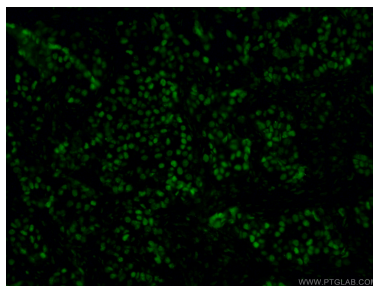
Immunohistochemical analysis of paraffin-embedded human breast cancer tissue slide using 66400-1-Ig (GATA3 Antibody) at dilution of 1:200 (under 40x lens). Heat mediated antigen retrieval with Tris-EDTA buffer (pH 9.0). This data was developed using the same antibody clone with 66400-1-PBS in a different storage buffer formulation.



Immunohistochemical analysis of paraffin-embedded human colon cancer tissue slide using 66400-1-Ig (GATA3 Antibody) at dilution of 1:200 (under 40x lens). Heat mediated antigen retrieval with Tris-EDTA buffer (pH 9.0). This data was developed using the same antibody clone with 66400-1-PBS in a different storage buffer formulation.



Immunofluorescent analysis of (4% PFA) fixed MCF-7 cells using GATA3 antibody (66400-1-Ig, Clone: 1B11A8) at dilution of 1:800 and CoraLite®488-Conjugated AffiniPure Goat Anti-Mouse IgG(H+L). This data was developed using the same antibody clone with 66400-1-PBS in a different storage buffer formulation.



Immunofluorescent analysis of (4% PFA) fixed human breast cancer tissue using 66400-1-Ig (GATA3 antibody) at dilution of 1:100 and Alexa Fluor 488-Conjugated AffiniPure Goat Anti-Mouse IgG(H+L). This data was developed using the same antibody clone with 66400-1-PBS in a different storage buffer formulation.