

PSMB10 Monoclonal antibody

Catalog Number: 66403-1-Ig

Basic Information

Catalog Number: 66403-1-Ig	GenBank Accession Number: BC017198	Purification Method: Protein A purification
Size: 150ul , Concentration: 1200 ug/ml by Nanodrop and 1000 ug/ml by Bradford method using BSA as the standard;	GeneID (NCBI): 5699	CloneNo.: 1G8C1
Source: Mouse	UNIPROT ID: P40306	Recommended Dilutions: WB 1:1000-1:4000 IHC 1:150-1:600 IF/ICC 1:400-1:1600
Isotype: IgG2a	Full Name: proteasome (prosome, macropain) subunit, beta type, 10	
Immunogen Catalog Number: AG8835	Calculated MW: 273 aa, 29 kDa	
	Observed MW: 28 kDa	

Applications

Tested Applications:
WB, IHC, IF/ICC, ELISA

Species Specificity:
human, mouse, rat, pig

Note-IHC: suggested antigen retrieval with TE buffer pH 9.0; (*) Alternatively, antigen retrieval may be performed with citrate buffer pH 6.0

Positive Controls:

WB : Raji cells, Ramos cells, U-937 cells, rat thymus tissue, human spleen tissue, pig thymus tissue

IHC : human liver cancer tissue, mouse kidney tissue

IF/ICC : Jurkat cells,

Background Information

SMB10(Proteasome subunit beta type-10) is also named as LMP10, MECL1. It belongs to the peptidase T1B family and is a multicatalytic proteinase complex which is characterized by its ability to cleave peptides with Arg, Phe, Tyr, Leu, and Glu adjacent to the leaving group at neutral or slightly basic pH.

Storage

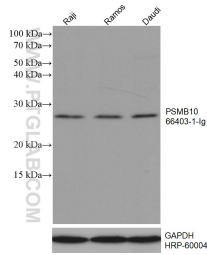
Storage:
Store at -20°C. Stable for one year after shipment.
Storage Buffer:
PBS with 0.02% sodium azide and 50% glycerol pH 7.3.
Aliquoting is unnecessary for -20°C storage

***** 20ul sizes contain 0.1% BSA**

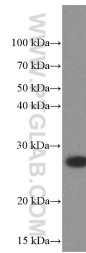
For technical support and original validation data for this product please contact:
T: 1 (888) 4PTGLAB (1-888-478-4522) (toll free in USA), or 1(312) 455-8498 (outside USA)
E: proteintech@ptglab.com
W: ptglab.com

This product is exclusively available under Proteintech Group brand and is not available to purchase from any other manufacturer.

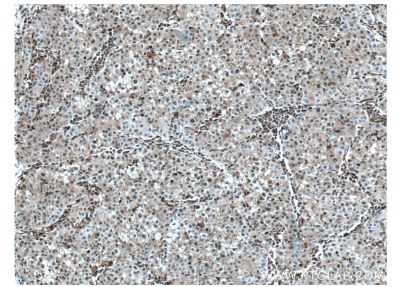
Selected Validation Data



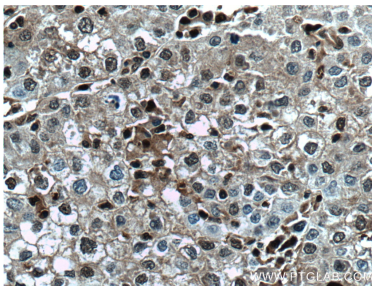
Various lysates were subjected to SDS PAGE followed by western blot with 66403-1-Ig (PSMB10 antibody) at dilution of 1:2000 incubated at room temperature for 1.5 hours. The membrane was stripped and reblotted with HRP-conjugated GAPDH Monoclonal antibody (HRP-60004) as loading control.



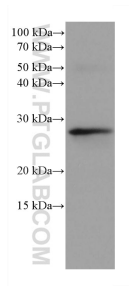
Raji cells were subjected to SDS PAGE followed by western blot with 66403-1-Ig (PSMB10 Antibody) at dilution of 1:1000 incubated at room temperature for 1.5 hours.



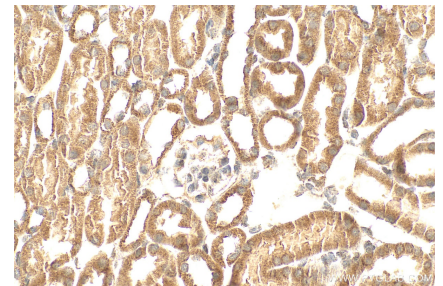
Immunohistochemical analysis of paraffin-embedded human liver cancer tissue slide using 66403-1-Ig (PSMB10 antibody) at dilution of 1:300 (under 10x lens. Heat mediated antigen retrieval with Tris-EDTA buffer (pH 9.0).



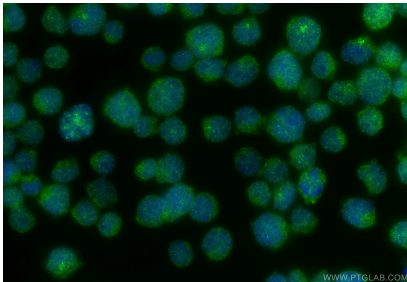
Immunohistochemical analysis of paraffin-embedded human liver cancer tissue slide using 66403-1-Ig (PSMB10 antibody) at dilution of 1:300 (under 40x lens. Heat mediated antigen retrieval with Tris-EDTA buffer (pH 9.0).



rat thymus tissue were subjected to SDS PAGE followed by western blot with 66403-1-Ig (PSMB10 antibody) at dilution of 1:2000 incubated at room temperature for 1.5 hours.



Immunohistochemical analysis of paraffin-embedded mouse kidney tissue slide using 66403-1-Ig (PSMB10 antibody) at dilution of 1:400 (under 40x lens). Heat mediated antigen retrieval with Tris-EDTA buffer (pH 9.0).



Immunofluorescent analysis of (4% PFA) fixed Jurkat cells using PSMB10 antibody (66403-1-Ig, Clone: 1G8C1) at dilution of 1:800 and CoraLite®488-Conjugated Goat Anti-Mouse IgG(H+L) (SA00013-1).