

For Research Use Only

# PSMB10 Monoclonal antibody, PBS Only

Catalog Number: 66403-1-PBS



## Basic Information

<b>Catalog Number:</b> 66403-1-PBS	<b>GenBank Accession Number:</b> BC017198	<b>Purification Method:</b> Protein A purification
<b>Size:</b> 100ug , Concentration: 1mg/ml by Nanodrop;	<b>GeneID (NCBI):</b> 5699	<b>CloneNo.:</b> 1G8C1
<b>Source:</b> Mouse	<b>UNIPROT ID:</b> P40306	
<b>Isotype:</b> IgG2a	<b>Full Name:</b> proteasome (prosome, macropain) subunit, beta type, 10	
<b>Immunogen Catalog Number:</b> AG8835	<b>Calculated MW:</b> 273 aa, 29 kDa	
	<b>Observed MW:</b> 28 kDa	

## Applications

**Tested Applications:**  
WB, IHC, IF/ICC, Indirect ELISA

**Species Specificity:**  
human, mouse, rat, pig

## Background Information

SMB10(Proteasome subunit beta type-10) is also named as LMP10, MECL1. It belongs to the peptidase T1B family and is a multicatalytic proteinase complex which is characterized by its ability to cleave peptides with Arg, Phe, Tyr, Leu, and Glu adjacent to the leaving group at neutral or slightly basic pH.

## Storage

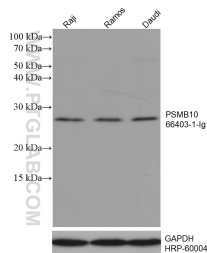
**Storage:**  
Store at -80°C.

**Storage Buffer:**  
PBS Only

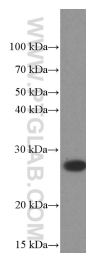
For technical support and original validation data for this product please contact:  
T: 1 (888) 4PTGLAB (1-888-478-4522) (toll free in USA), or 1(312) 455-8498 (outside USA)  
E: [proteintech@ptglab.com](mailto:proteintech@ptglab.com)  
W: [ptglab.com](http://ptglab.com)

This product is exclusively available under Proteintech Group brand and is not available to purchase from any other manufacturer.

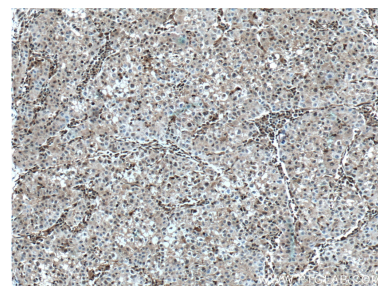
## Selected Validation Data



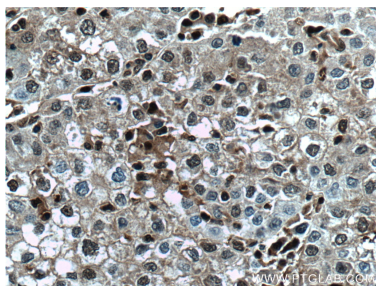
Various lysates were subjected to SDS PAGE followed by western blot with 66403-1-Ig (PSMB10 antibody) at dilution of 1:2000 incubated at room temperature for 1.5 hours. The membrane was stripped and reblotted with HRP-conjugated GAPDH Monoclonal antibody (HRP-60004) as loading control. This data was developed using the same antibody clone with 66403-1-PBS in a different storage buffer formulation.



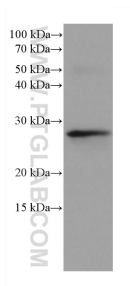
Raji cells were subjected to SDS PAGE followed by western blot with 66403-1-Ig (PSMB10 Antibody) at dilution of 1:1000 incubated at room temperature for 1.5 hours. This data was developed using the same antibody clone with 66403-1-PBS in a different storage buffer formulation.



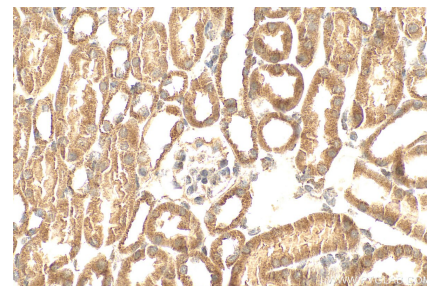
Immunohistochemical analysis of paraffin-embedded human liver cancer tissue slide using 66403-1-Ig (PSMB10 antibody) at dilution of 1:300 (under 10x lens). Heat mediated antigen retrieval with Tris-EDTA buffer (pH 9.0). This data was developed using the same antibody clone with 66403-1-PBS in a different storage buffer formulation.



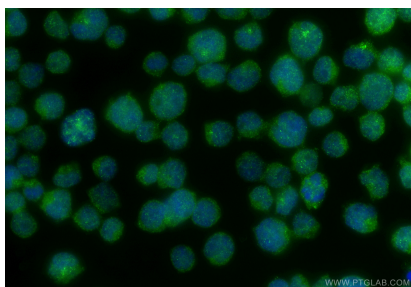
Immunohistochemical analysis of paraffin-embedded human liver cancer tissue slide using 66403-1-Ig (PSMB10 antibody) at dilution of 1:300 (under 40x lens). Heat mediated antigen retrieval with Tris-EDTA buffer (pH 9.0). This data was developed using the same antibody clone with 66403-1-PBS in a different storage buffer formulation.



rat thymus tissue were subjected to SDS PAGE followed by western blot with 66403-1-Ig (PSMB10 antibody) at dilution of 1:2000 incubated at room temperature for 1.5 hours. This data was developed using the same antibody clone with 66403-1-PBS in a different storage buffer formulation.



Immunohistochemical analysis of paraffin-embedded mouse kidney tissue slide using 66403-1-Ig (PSMB10 antibody) at dilution of 1:400 (under 40x lens). Heat mediated antigen retrieval with Tris-EDTA buffer (pH 9.0). This data was developed using the same antibody clone with 66403-1-PBS in a different storage buffer formulation.



Immunofluorescent analysis of (4% PFA) fixed Jurkat cells using PSMB10 antibody (66403-1-Ig, Clone: 1G8C1) at dilution of 1:800 and CoraLite®488-Conjugated Goat Anti-Mouse IgG(H+L) (SA00013-1). This data was developed using the same antibody clone with 66403-1-PBS in a different storage buffer formulation.