

For Research Use Only

Annexin A3 Monoclonal antibody

Catalog Number: 66405-1-Ig



Basic Information

Catalog Number: 66405-1-Ig	GenBank Accession Number: BC000871	Purification Method: Protein A purification
Size: 150ul , Concentration: 1300 µg/ml by Nanodrop and 1000 µg/ml by Bradford method using BSA as the standard;	GeneID (NCBI): 306	CloneNo.: 1A11E4
Source: Mouse	Full Name: annexin A3	Recommended Dilutions: WB 1:2000-1:16000 IHC 1:50-1:500
Isotype: IgG2a	Calculated MW: 322 aa, 36 kDa	
Immunogen Catalog Number: AG2381	Observed MW: 36 kDa	

Applications

Tested Applications:

IHC, WB, ELISA

Species Specificity:

human

**Note-IHC: suggested antigen retrieval with
TE buffer pH 9.0; (*) Alternatively, antigen
retrieval may be performed with citrate
buffer pH 6.0**

Positive Controls:

WB : HepG2 cells, HEK-293 cells, L02 cells, human heart
tissue, human spleen tissue

IHC : human pancreas tissue,

Background Information

Annexin A3 (Anxa3), also named as lipocortin3, placental anticoagulant protein3 (PAP-III), belongs to annexin family. Annexins are calcium-dependent phospholipids-binding high-abundant intracellular proteins. ANXA3 has been reported to play crucial roles in a diverse range of molecular and cellular processes, including ion channel regulation, anticoagulation, anti-inflammation, vesicle traffick-ing, signal transduction, cell migration, and cell proliferation. It also exhibits important roles in cancer progression, metastasis, and drug resistance.

Storage

Storage:

Store at -20°C. Stable for one year after shipment.

Storage Buffer:

PBS with 0.02% sodium azide and 50% glycerol pH 7.3.

Aliquoting is unnecessary for -20°C storage

*** 20ul sizes contain 0.1% BSA

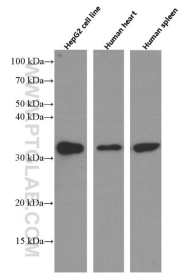
For technical support and original validation data for this product please contact:

T: 1 (888) 4PTGLAB (1-888-478-4522) (toll free
in USA), or 1(312) 455-8498 (outside USA)

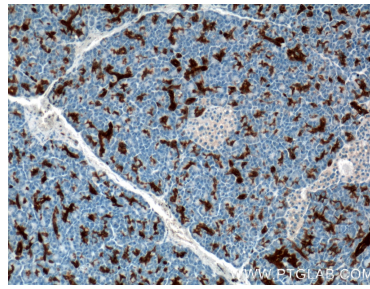
E: proteintech@ptglab.com
W: ptglab.com

This product is exclusively available under Proteintech Group brand and is not available to purchase from any other manufacturer.

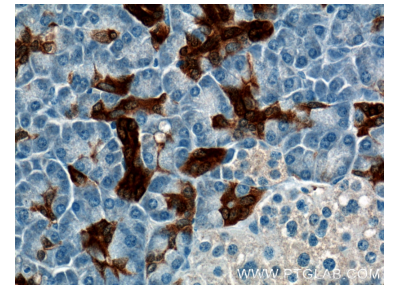
Selected Validation Data



Various lysates were subjected to SDS PAGE followed by western blot with 66405-1-Ig (Annexin A3 antibody at dilution of 1:8000 incubated at room temperature for 1.5 hours.



Immunohistochemical analysis of paraffin-embedded human pancreas tissue slide using 66405-1-Ig (Annexin A3 antibody at dilution of 1:200 (under 10x lens).



Immunohistochemical analysis of paraffin-embedded human pancreas tissue slide using 66405-1-Ig (Annexin A3 antibody at dilution of 1:200 (under 40x lens).