

For Research Use Only

Annexin A3 Monoclonal antibody, PBS Only

Catalog Number: 66405-1-PBS



Basic Information

Catalog Number: 66405-1-PBS	GenBank Accession Number: BC000871	Purification Method: Protein A purification
Size: 100ug , Concentration: 1mg/ml by Nanodrop;	GeneID (NCBI): 306	CloneNo.: 1A11E4
Source: Mouse	UNIPROT ID: P12429	
Isotype: IgG2a	Full Name: annexin A3	
Immunogen Catalog Number: AG2381	Calculated MW: 322 aa, 36 kDa	
	Observed MW: 36 kDa	

Applications

Tested Applications:
WB, IHC, Indirect ELISA

Species Specificity:
human

Background Information

Annexin A3 (Anxa3), also named as lipocortin3, placental anticoagulant protein3 (PAP-III), belongs to annexin family. Annexins are calcium-dependent phospholipids-binding high-abundant intracellular proteins. ANXA3 has been reported to play crucial roles in a diverse range of molecular and cellular processes, including ion channel regulation, anticoagulation, anti-inflammation, vesicle traffick-ing, signal transduction, cell migration, and cell proliferation. It also exhibits important roles in cancer progression, metastasis, and drug resistance.

Storage

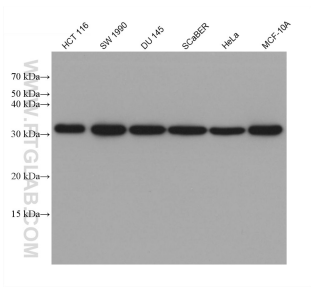
Storage:
Store at -80°C.

Storage Buffer:
PBS Only

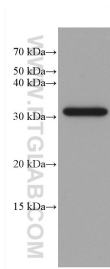
For technical support and original validation data for this product please contact:
T: 1 (888) 4PTGLAB (1-888-478-4522) (toll free in USA), or 1(312) 455-8498 (outside USA)
E: proteintech@ptglab.com
W: ptglab.com

This product is exclusively available under Proteintech Group brand and is not available to purchase from any other manufacturer.

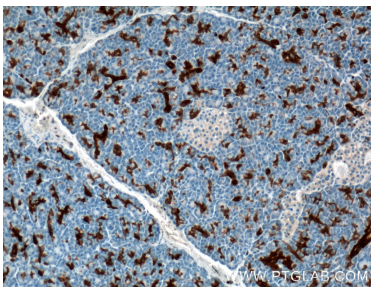
Selected Validation Data



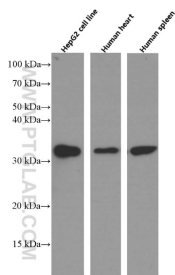
Various lysates were subjected to SDS PAGE followed by western blot with 66405-1-Ig (Annexin A3 antibody) at dilution of 1:20000 incubated at room temperature for 1.5 hours. This data was developed using the same antibody clone with 66405-1-PBS in a different storage buffer formulation.



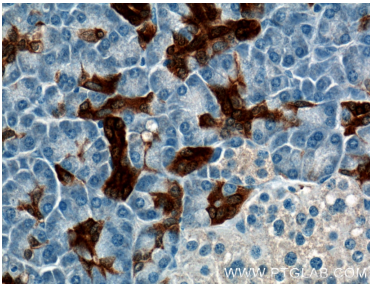
Caco-2 cells were subjected to SDS PAGE followed by western blot with 66405-1-Ig (Annexin A3 antibody) at dilution of 1:20000 incubated at room temperature for 1.5 hours. This data was developed using the same antibody clone with 66405-1-PBS in a different storage buffer formulation.



Immunohistochemical analysis of paraffin-embedded human pancreas tissue slide using 66405-1-Ig (Annexin A3 antibody at dilution of 1:200 (under 10x lens). This data was developed using the same antibody clone with 66405-1-PBS in a different storage buffer formulation.



Various lysates were subjected to SDS PAGE followed by western blot with 66405-1-Ig (Annexin A3 antibody at dilution of 1:8000 incubated at room temperature for 1.5 hours. This data was developed using the same antibody clone with 66405-1-PBS in a different storage buffer formulation.



Immunohistochemical analysis of paraffin-embedded human pancreas tissue slide using 66405-1-Ig (Annexin A3 antibody at dilution of 1:200 (under 40x lens). This data was developed using the same antibody clone with 66405-1-PBS in a different storage buffer formulation.