

For Research Use Only

# LDLR Monoclonal antibody

Catalog Number: 66414-1-Ig

Featured Product

7 Publications



## Basic Information

Catalog Number:

66414-1-Ig

Size:

150ul, Concentration: 1200 ug/ml by Nanodrop and 1000 ug/ml by Bradford method using BSA as the standard;

Source:

Mouse

Isotype:

IgG1

Immunogen Catalog Number:

AG1236

GenBank Accession Number:

BC014514

GeneID (NCBI):

3949

ENSEMBL Gene ID:

ENSG00000130164

UNIPROT ID:

P01130

Full Name:

low density lipoprotein receptor

Calculated MW:

95 kDa

Observed MW:

120 kDa, 160 kDa

Purification Method:

Protein A purification

CloneNo.:

1A2A3

Recommended Dilutions:

WB 1:5000-1:15000

IHC 1:50-1:500

## Applications

Tested Applications:

WB, IHC, ELISA

Cited Applications:

WB

Species Specificity:

human

Cited Species:

human, hamster

**Note-IHC: suggested antigen retrieval with TE buffer pH 9.0; (\*) Alternatively, antigen retrieval may be performed with citrate buffer pH 6.0**

Positive Controls:

WB : HeLa cells, HEK-293 cells, Jurkat cells, HepG2 cells, MCF-7 cells, Raji cells

IHC : human liver tissue,

## Background Information

LDLR (low density lipoprotein receptor) is a member of the LDL receptor gene family and is involved in receptor-mediated endocytosis of specific ligands. The LDLR is a cell surface glycoprotein that scavenges LDL from the blood and regulates plasma LDL cholesterol. The cytoplasmic domain of the LDL receptor is necessary for the receptor to cluster in coated pits, which promotes the rapid endocytosis of bound LDL. The protein is highly glycosylated through N- and O-linkages and thus migrates at 100 to 160 kDa bands on SDS-PAGE.

## Notable Publications

Author	Pubmed ID	Journal	Application
Zoe White	36447272	Skelet Muscle	WB
Jun Xiao	30864739	Int J Mol Med	WB
Shui-Mei Sun	32724176	Acta Pharmacol Sin	WB

## Storage

Storage:

Store at -20°C. Stable for one year after shipment.

Storage Buffer:

PBS with 0.02% sodium azide and 50% glycerol pH 7.3.

Aliquoting is unnecessary for -20°C storage

\*\*\* 20ul sizes contain 0.1% BSA

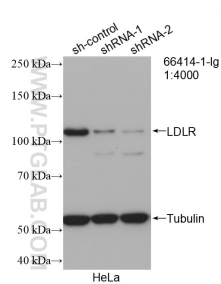
For technical support and original validation data for this product please contact:

T: 1 (888) 4PTGLAB (1-888-478-4522) (toll free in USA), or 1(312) 455-8498 (outside USA)

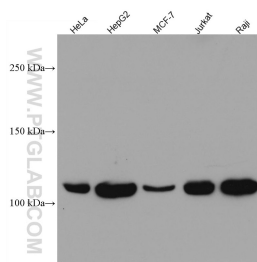
E: proteintech@ptglab.com  
W: ptglab.com

This product is exclusively available under Proteintech Group brand and is not available to purchase from any other manufacturer.

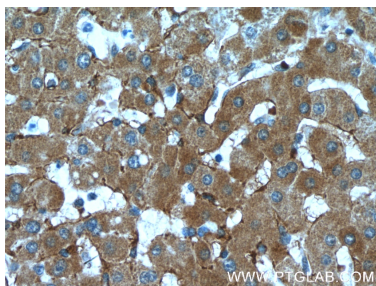
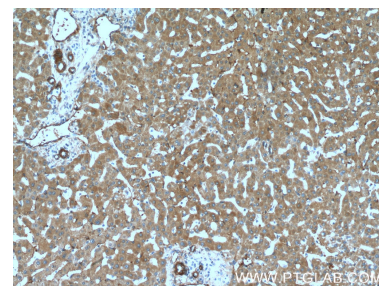
## Selected Validation Data



WB result of LDLR antibody (66414-1-Ig; 1:4000; incubated at room temperature for 1.5 hours) with sh-Control and sh-LDLR transfected HeLa cells.



Various lysates were subjected to SDS PAGE followed by western blot with 66414-1-Ig (LDLR antibody) at dilution of 1:10000 incubated at room temperature for 1.5 hours.



Immunohistochemical analysis of paraffin-embedded human liver tissue slide using 66414-1-Ig (LDLR Antibody) at dilution of 1:400 (under 40x lens).