

P2RX4 Monoclonal antibody, PBS Only

Catalog Number: 66416-1-PBS

Basic Information

Catalog Number: 66416-1-PBS	GenBank Accession Number: BC033826	Purification Method: Protein A purification
Size: 100ug , Concentration: 1 mg/ml by Nanodrop;	GeneID (NCBI): 5025	CloneNo.: 1A5A6
Source: Mouse	UNIPROT ID: Q99571	
Isotype: IgG2b	Full Name: purinergic receptor P2X, ligand-gated ion channel, 4	
Immunogen Catalog Number: AG4445	Calculated MW: 388 aa, 43 kDa	
	Observed MW: 50 kDa	

Applications

Tested Applications:
WB, IHC, Indirect ELISA

Species Specificity:
human, mouse, pig, rat

Background Information

Nucleotides, the structural subunits of the nucleic acids, are also important extracellular signaling molecules. P2 receptors are a family of cell surface receptors that mediate a wide variety of physiologic effects in response to extracellular nucleotides. These receptors fall into two classes: P2X receptors, which are ligand-gated ion channels that mediate calcium and potassium fluxes in response to ATP, and P2Y receptors, which are G protein-coupled receptors (GPCRs). P2RX4 (P2X purinoceptor 4) is a receptor for ATP acting as a ligand gated ion channel. The calculated molecular weight of P2RX4 is 43 kDa, larger apparent molecular weights of 50-80 kDa have been reported, possibly due to post-translational glycosylation (PMID: 24040145, 15262999; 29382907; 12566439).

Storage

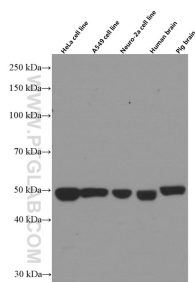
Storage:
Store at -80°C.

Storage Buffer:
PBS Only

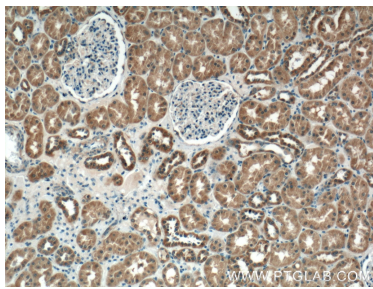
For technical support and original validation data for this product please contact:
T: 1 (888) 4PTGLAB (1-888-478-4522) (toll free in USA), or 1(312) 455-8498 (outside USA)
E: proteintech@ptglab.com
W: ptglab.com

This product is exclusively available under Proteintech Group brand and is not available to purchase from any other manufacturer.

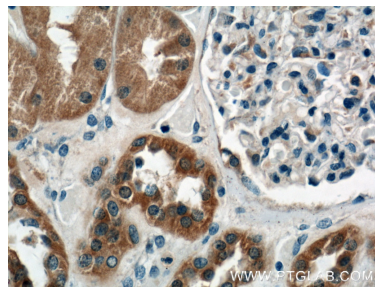
Selected Validation Data



Various lysates were subjected to SDS PAGE followed by western blot with 66416-1-Ig (P2RX4 Antibody) at dilution of 1:4000 incubated at room temperature for 1.5 hours. This data was developed using the same antibody clone with 66416-1-PBS in a different storage buffer formulation.



Immunohistochemical analysis of paraffin-embedded human kidney tissue slide using 66416-1-Ig (P2RX4 Antibody) at dilution of 1:400 (under 10x lens). This data was developed using the same antibody clone with 66416-1-PBS in a different storage buffer formulation.



Immunohistochemical analysis of paraffin-embedded human kidney tissue slide using 66416-1-Ig (P2RX4 Antibody) at dilution of 1:400 (under 40x lens). This data was developed using the same antibody clone with 66416-1-PBS in a different storage buffer formulation.