

For Research Use Only

# LAP3 Monoclonal antibody, PBS Only

Catalog Number: 66417-1-PBS



## Basic Information

<b>Catalog Number:</b> 66417-1-PBS	<b>GenBank Accession Number:</b> BC065564	<b>Purification Method:</b> Protein G purification
<b>Size:</b> 100ug , Concentration: 1 mg/ml by Nanodrop;	<b>GeneID (NCBI):</b> 51056	<b>CloneNo.:</b> 1B11B8
<b>Source:</b> Mouse	<b>UNIPROT ID:</b> P28838	
<b>Isotype:</b> IgG1	<b>Full Name:</b> leucine aminopeptidase 3	
<b>Immunogen Catalog Number:</b> AG6300	<b>Calculated MW:</b> 56 kDa	
	<b>Observed MW:</b> 56 kDa	

## Applications

**Tested Applications:**  
WB, IF, IHC, Indirect ELISA

**Species Specificity:**  
human, mouse, rat, pig

## Background Information

LAP3 (Leucine aminopeptidase 3) is also named as LAPEP, PEPS (peptidase S) and belongs to the peptidase M17 family. It can catalyze the removal of unsubstituted N-terminal amino-acids from various peptides and be presumably involved in the processing and regular turnover of intracellular proteins. PEPS is found in a wide variety of tissues and cultured cells but not in red cells and skin. The enzyme can utilize several di-, tri-, and tetrapeptides as substrates and is the slowest migrating of the peptidases after electrophoresis. (PMID:689684). LAP3 has two isoforms with MW of 52 and 56 kDa.

## Storage

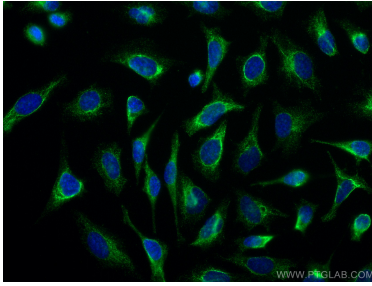
**Storage:**  
Store at -80°C.

**Storage Buffer:**  
PBS Only

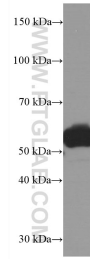
For technical support and original validation data for this product please contact:  
T: 1 (888) 4PTGLAB (1-888-478-4522) (toll free in USA), or 1(312) 455-8498 (outside USA)  
E: [proteintech@ptglab.com](mailto:proteintech@ptglab.com)  
W: [ptglab.com](http://ptglab.com)

This product is exclusively available under Proteintech Group brand and is not available to purchase from any other manufacturer.

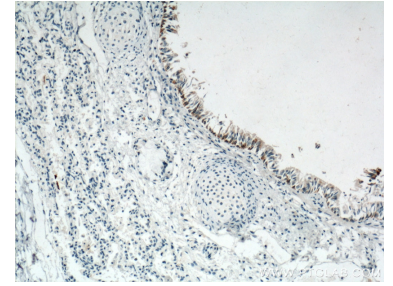
## Selected Validation Data



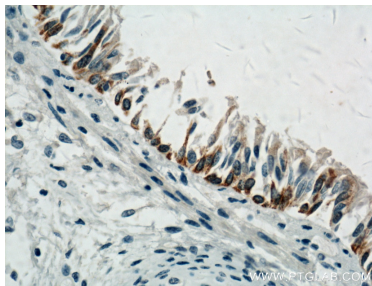
Immunofluorescent analysis of (-20°C Ethanol) fixed HeLa cells using LAP3 antibody (66417-1-Ig, Clone: 1B11B8) at dilution of 1:400 and CoraLite®488-Conjugated AffiniPure Goat Anti-Mouse IgG(H+L). This data was developed using the same antibody clone with 66417-1-PBS in a different storage buffer formulation.



NIH/3T3 cells were subjected to SDS PAGE followed by western blot with 66417-1-Ig (LAP3 Antibody) at dilution of 1:3000 incubated at room temperature for 1.5 hours. This data was developed using the same antibody clone with 66417-1-PBS in a different storage buffer formulation.



Immunohistochemical analysis of paraffin-embedded human lung tissue slide using 66417-1-Ig (LAP3 Antibody) at dilution of 1:200 (under 10x lens). Heat mediated antigen retrieval with Tris-EDTA buffer (pH 9.0). This data was developed using the same antibody clone with 66417-1-PBS in a different storage buffer formulation.



Immunohistochemical analysis of paraffin-embedded human lung tissue slide using 66417-1-Ig (LAP3 Antibody) at dilution of 1:200 (under 40x lens). Heat mediated antigen retrieval with Tris-EDTA buffer (pH 9.0). This data was developed using the same antibody clone with 66417-1-PBS in a different storage buffer formulation.