

For Research Use Only

CDC37 Monoclonal antibody

Catalog Number: 66420-1-Ig **2 Publications**



Basic Information

Catalog Number: 66420-1-Ig	GenBank Accession Number: BC000083	Purification Method: Protein A purification
Size: 150ul , Concentration: 1600 ug/ml by Nanodrop and 1000 ug/ml by Bradford method using BSA as the standard;	GeneID (NCBI): 11140	CloneNo.: 1C2A6
Source: Mouse	UNIPROT ID: Q16543	Recommended Dilutions: WB 1:2000-1:5000 IF/ICC 1:50-1:500
Isotype: IgG2a	Full Name: cell division cycle 37 homolog (S. cerevisiae)	
Immunogen Catalog Number: AG0267	Calculated MW: 44 kDa	
	Observed MW: 44 kDa	

Applications

Tested Applications: WB, IF/ICC, ELISA	Positive Controls:
Cited Applications: WB, IF	WB : HeLa cells, HEK-293 cells, MCF-7 cells, Jurkat cells, ROS1728 cells, RAW 264.7 cells, NIH/3T3 cells
Species Specificity: human, mouse, rat	IF/ICC : HeLa cells,
Cited Species: human, rat	

Background Information

CDC (cell division control) family of proteins are regulatory proteins involved in the processes of cell cycle and proliferation. CDC37, migrated as a protein of 50 kDa in SDS PAGE, is a co-chaperone protein that recruits several immature client kinases to Hsp90 for proper folding. It functions in association with Hsp90, although little is known of its mechanism of action or where it fits into a folding pathway involving other Hsp90 cochaperones. CDC37 up-regulation is a common early event in some localized human cancers. But, the effect of CDC37 dysregulation in human cells is unclear.

Notable Publications

Author	Pubmed ID	Journal	Application
Chuan-Jing Cheng	34326484	Acta Pharmacol Sin	IF
Yujie Li	39337469	Int J Mol Sci	WB

Storage

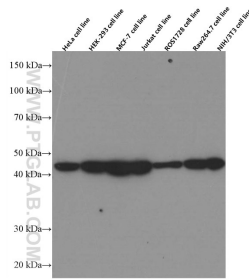
Storage:
Store at -20°C. Stable for one year after shipment.
Storage Buffer:
PBS with 0.02% sodium azide and 50% glycerol pH 7.3.
Aliquoting is unnecessary for -20°C storage

*** 20ul sizes contain 0.1% BSA

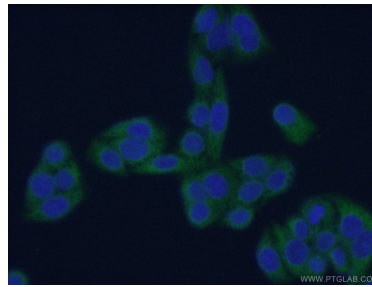
For technical support and original validation data for this product please contact:
T: 1 (888) 4PTGLAB (1-888-478-4522) (toll free in USA), or 1(312) 455-8498 (outside USA)
E: proteintech@ptglab.com
W: ptglab.com

This product is exclusively available under Proteintech Group brand and is not available to purchase from any other manufacturer.

Selected Validation Data



Various lysates were subjected to SDS PAGE followed by western blot with 66420-1-Ig (CDC37 Antibody) at dilution of 1:5000 incubated at room temperature for 1.5 hours.



Immunofluorescent analysis of (-20°C Ethanol) fixed HeLa cells using 66420-1-Ig(CDC37 antibody) at dilution of 1:100 and Alexa Fluor 488-conjugated Goat Anti-Mouse IgG(H+L).