

For Research Use Only

# PDI Monoclonal antibody, PBS Only (Capture)

Catalog Number: 66422-1-PBS

Featured Product



## Basic Information

Catalog Number:

66422-1-PBS

Size:

100ug, Concentration: 1mg/ml by Nanodrop;

Source:

Mouse

Isotype:

IgG2b

Immunogen Catalog Number:

AG1747

GenBank Accession Number:

BC014504

GeneID (NCBI):

5034

UNIPROT ID:

P07237

Full Name:

prolyl 4-hydroxylase, beta polypeptide

Calculated MW:

57 kDa

Observed MW:

57 kDa

Purification Method:

Protein A purification

CloneNo.:

2E6A11

## Applications

Tested Applications:

WB, IHC, IF/ICC, Cytometric bead array, Indirect ELISA

Species Specificity:

human, mouse, rat, pig

## Product Information

66422-1-PBS targets PDI as part of a matched antibody pair:

MP50798-2: 66422-1-PBS capture and 66422-3-PBS detection (validated in Cytometric bead array)

Unconjugated mouse monoclonal antibody pair in PBS only (BSA and azide free) storage buffer at a concentration of 1 mg/mL, ready for conjugation.

This conjugation ready format makes antibodies ideal for use in many applications including: ELISAs, multiplex assays requiring matched pairs, mass cytometry, and multiplex imaging applications. Antibody use should be optimized by the end user for each application and assay.

## Background Information

PDIA1 (Protein disulfide-isomerase) is also named as ERBA2L, PDI, P4HB, PO4DB. It is a multifunctional protein that catalyzes the formation, breakage and rearrangement of disulfide bonds. In some cell types, it seems to be secreted or associated with the plasma membrane, where it undergoes constant shedding and replacement from intracellular sources. It can exist as homodimer and monomers and homotetramers may also occur (PMID:12095988).

## Storage

Storage:

Store at -80°C.

Storage Buffer:

PBS Only

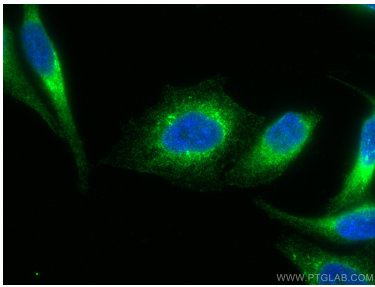
For technical support and original validation data for this product please contact:

T: 1 (888) 4PTGLAB (1-888-478-4522) (toll free in USA), or 1(312) 455-8498 (outside USA)

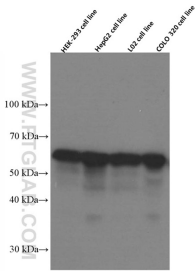
E: [proteintech@ptglab.com](mailto:proteintech@ptglab.com)  
W: [ptglab.com](http://ptglab.com)

This product is exclusively available under Proteintech Group brand and is not available to purchase from any other manufacturer.

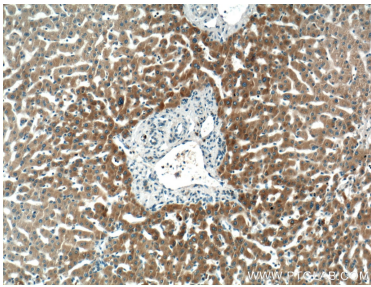
Selected Validation Data



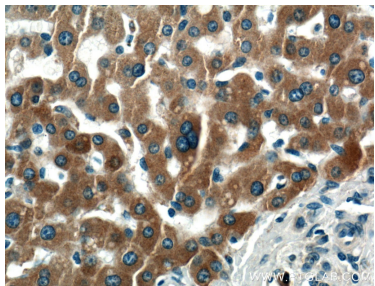
Immunofluorescent analysis of (4% PFA) fixed HepG2 cells using PDI antibody (66422-1-Ig, Clone: 2E6A11 ) at dilution of 1:400 and CoraLite®488-Conjugated AffiniPure Goat Anti-Mouse IgG(H+L). This data was developed using the same antibody clone with 66422-1-PBS in a different storage buffer formulation.



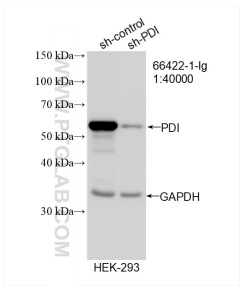
HEK-293 cells were subjected to SDS PAGE followed by western blot with 66422-1-Ig (PDI Antibody) at dilution of 1:50000 incubated at room temperature for 1.5 hours. This data was developed using the same antibody clone with 66422-1-PBS in a different storage buffer formulation.



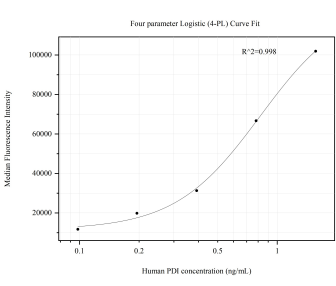
Immunohistochemical analysis of paraffin-embedded human liver tissue slide using 66422-1-Ig (PDI Antibody) at dilution of 1:200 (under 10x lens). This data was developed using the same antibody clone with 66422-1-PBS in a different storage buffer formulation.



Immunohistochemical analysis of paraffin-embedded human liver tissue slide using 66422-1-Ig (PDI Antibody) at dilution of 1:200 (under 40x lens). This data was developed using the same antibody clone with 66422-1-PBS in a different storage buffer formulation.



WB result of PDI antibody (66422-1-Ig; 1:40000; incubated at room temperature for 1.5 hours) with sh-Control and sh-PDI transfected HEK-293 cells. This data was developed using the same antibody clone with 66422-1-PBS in a different storage buffer formulation.



Cytometric bead array standard curve of MP50798-2, PDI Monoclonal Matched Antibody Pair, PBS Only. Capture antibody: 66422-1-PBS. Detection antibody: 66422-3-PBS. Standard:Ag1747. Range: 0.098-1.563 ng/mL.