

For Research Use Only

# GDI1 Monoclonal antibody

Catalog Number: 66434-1-Ig **3 Publications**



## Basic Information

<b>Catalog Number:</b> 66434-1-Ig	<b>GenBank Accession Number:</b> BC000317	<b>Purification Method:</b> Protein G purification
<b>Size:</b> 150ul , Concentration: 1000 ug/ml by Nanodrop;	<b>GeneID (NCBI):</b> 2664	<b>CloneNo.:</b> 4E1G1
<b>Source:</b> Mouse	<b>UNIPROT ID:</b> P31150	<b>Recommended Dilutions:</b> WB 1:5000-1:50000 IHC 1:500-1:1000 IF/ICC 1:50-1:500
<b>Isotype:</b> IgG1	<b>Full Name:</b> GDP dissociation inhibitor 1	
<b>Immunogen Catalog Number:</b> AG17511	<b>Calculated MW:</b> 51 kDa	
	<b>Observed MW:</b> 55 kDa	

## Applications

<b>Tested Applications:</b> WB, IHC, IF/ICC, ELISA	<b>Positive Controls:</b>
<b>Cited Applications:</b> WB, IHC	<b>WB :</b> Saos-2 cells, HEK-293 cells, mouse brain tissue, Neuro-2a cells, pig brain tissue, rat brain tissue, U-251 cells, rabbit brain tissue, PANC-1 cells, MCF-7 cells
<b>Species Specificity:</b> human, mouse, rat, pig	<b>IHC :</b> human breast cancer tissue,
<b>Cited Species:</b> human	<b>IF/ICC :</b> MCF-7 cells,
<b>Note-IHC: suggested antigen retrieval with TE buffer pH 9.0; (*) Alternatively, antigen retrieval may be performed with citrate buffer pH 6.0</b>	

## Background Information

GDP dissociation inhibitors (GDIs) are proteins that regulate the GDP-GTP exchange reaction of members of the rab family. GDIs can bind and release GDP-bound Rab proteins from membranes. Two GDI proteins towards different Rab proteins have been identified. GDI1 interacts with almost all of the Rab proteins, while GDI2 interacts with Rab11 but not Rab3A. GDI1 is expressed primarily in neural and sensory tissues and also in secretory cells, displaying a diffuse, cytoplasmic distribution in cells. It runs as a 55 kDa protein in SDS-PAGE. (PMID: 7929030, PMID: 19570034)

## Notable Publications

Author	Pubmed ID	Journal	Application
Peng Chen	32382060	Signal Transduct Target Ther	IHC
Xiao Xie	34515625	Bioengineered	IHC
Jiangxia Li	38266317	Acta Histochem	WB

## Storage

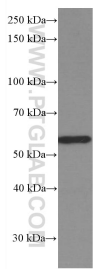
**Storage:**  
Store at -20°C. Stable for one year after shipment.  
**Storage Buffer:**  
PBS with 0.02% sodium azide and 50% glycerol pH 7.3.  
Aliquoting is unnecessary for -20°C storage

\*\*\* 20ul sizes contain 0.1% BSA

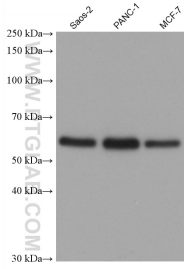
For technical support and original validation data for this product please contact:  
T: 1 (888) 4PTGLAB (1-888-478-4522) (toll free in USA), or 1(312) 455-8498 (outside USA)  
E: proteintech@ptglab.com  
W: ptglab.com

This product is exclusively available under Proteintech Group brand and is not available to purchase from any other manufacturer.

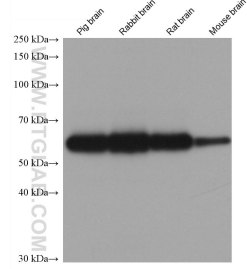
Selected Validation Data



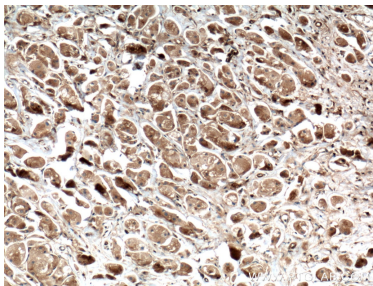
U-251 cells were subjected to SDS PAGE followed by western blot with 66434-1-Ig (GDI1 Antibody) at dilution of 1:20000 incubated at room temperature for 1.5 hours.



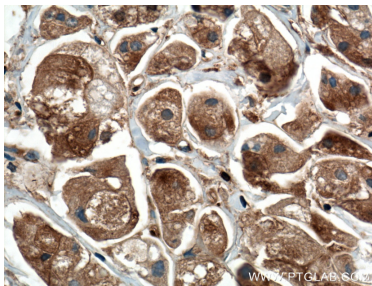
Various lysates were subjected to SDS PAGE followed by western blot with 66434-1-Ig (GDI1 antibody) at dilution of 1:20000 incubated at room temperature for 1.5 hours.



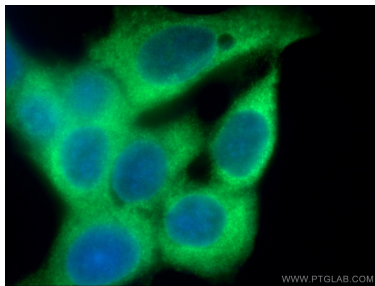
Various lysates were subjected to SDS PAGE followed by western blot with 66434-1-Ig (GDI1 antibody) at dilution of 1:20000 incubated at room temperature for 1.5 hours.



Immunohistochemical analysis of paraffin-embedded human breast cancer tissue slide using 66434-1-Ig (GDI1 antibody) at dilution of 1:1000 (under 10x lens. Heat mediated antigen retrieval with Tris-EDTA buffer (pH 9.0).



Immunohistochemical analysis of paraffin-embedded human breast cancer tissue slide using 66434-1-Ig (GDI1 antibody) at dilution of 1:1000 (under 40x lens. Heat mediated antigen retrieval with Tris-EDTA buffer (pH 9.0).



Immunofluorescent analysis of (-20°C Ethanol) fixed MCF-7 cells using 66434-1-Ig (GDI1 antibody) at dilution of 1:100 and Alexa Fluor 488-conjugated AffiniPure Goat Anti-Mouse IgG(H+L).