

CSN2 Monoclonal antibody

Catalog Number: 66435-1-Ig

Basic Information

| | | |
|---|---|--|
| Catalog Number: 66435-1-Ig | GenBank Accession Number: BC012629 | Purification Method: Protein G purification |
| Size: 150ul, Concentration: 1100 ug/ml by Nanodrop and 1000 ug/ml by Bradford method using BSA as the standard; | GeneID (NCBI): 9318 | CloneNo.: 2H10E6 |
| Source: Mouse | UNIPROT ID: P61201 | Recommended Dilutions: WB 1:2000-1:16000 IHC 1:50-1:500 IF-P 1:200-1:800 |
| Isotype: IgG1 | Full Name: COP9 constitutive photomorphogenic homolog subunit 2 (Arabidopsis) | |
| Immunogen Catalog Number: AG1415 | Calculated MW: 52 kDa | |
| | Observed MW: 52 kDa | |

Applications

| | |
|--|---|
| Tested Applications: WB, IHC, IF-P, ELISA | Positive Controls: |
| Species Specificity: human, mouse, rat | WB : NIH/3T3 cells, C6 cells, RAW 264.7 cells, ROS1728 cells |
| Note-IHC: suggested antigen retrieval with TE buffer pH 9.0; (*) Alternatively, antigen retrieval may be performed with citrate buffer pH 6.0 | IHC : human ovary tumor tissue, |
| | IF-P : human ovary tumor tissue, |

Background Information

COPS2 is an essential component of the COP9 signalosome complex (CSN), a complex involved in various cellular and developmental processes. The CSN complex is an essential regulator of the ubiquitin (Ubl) conjugation pathway by mediating the deneddylation of the cullin subunits of SCF-type E3 ligase complexes, leading to decrease the Ubl ligase activity of SCF-type complexes such as SCF, CSA or DDB2. The complex is also involved in phosphorylation of p53/TP53, c-jun/JUN, IkappaBalpha/NFKBIA, ITPK1 and IRF8/ICSBP, possibly via its association with CK2 and PKD kinases. CSN-dependent phosphorylation of TP53 and JUN promotes and protects degradation by the Ubl system, respectively.

Storage

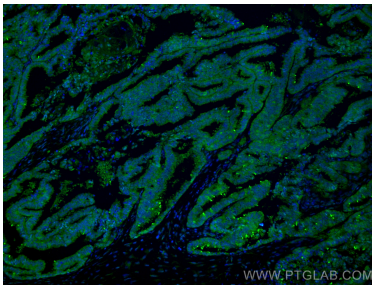
Storage:
Store at -20°C. Stable for one year after shipment.
Storage Buffer:
PBS with 0.02% sodium azide and 50% glycerol pH 7.3.
Aliquoting is unnecessary for -20°C storage

*** 20ul sizes contain 0.1% BSA

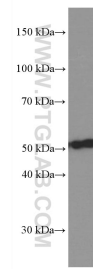
For technical support and original validation data for this product please contact:
T: 1 (888) 4PTGLAB (1-888-478-4522) (toll free in USA), or 1(312) 455-8498 (outside USA)
E: proteintech@ptglab.com
W: ptglab.com

This product is exclusively available under Proteintech Group brand and is not available to purchase from any other manufacturer.

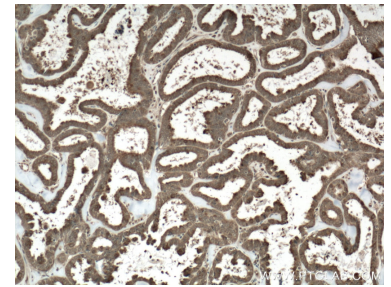
Selected Validation Data



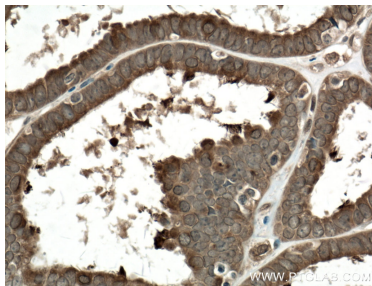
Immunofluorescent analysis of (4% PFA) fixed human ovary tumor tissue using CSN2 antibody (66435-1-Ig, Clone: 2H10E6) at dilution of 1:400 and CoraLite®488-Conjugated Goat Anti-Mouse IgG(H+L).



NIH/3T3 cells were subjected to SDS PAGE followed by western blot with 66435-1-Ig (CSN2 antibody) at dilution of 1:8000 incubated at room temperature for 1.5 hours.



Immunohistochemical analysis of paraffin-embedded human ovary tumor tissue slide using 66435-1-Ig (CSN2 antibody) at dilution of 1:500 (under 10x lens). Heat mediated antigen retrieval with Tris-EDTA buffer (pH 9.0).



Immunohistochemical analysis of paraffin-embedded human ovary tumor tissue slide using 66435-1-Ig (COPS2 Antibody) at dilution of 1:500 (under 40x lens). Heat mediated antigen retrieval with Tris-EDTA buffer (pH 9.0).