

For Research Use Only

NFE2 Monoclonal antibody

Catalog Number: 66436-1-Ig



Basic Information

Catalog Number:

66436-1-Ig

Size:

150ul, Concentration: 1600 ug/ml by
Nanodrop and 1000 ug/ml by Bradford
method using BSA as the standard;

Source:

Mouse

Isotype:

IgG1

Immunogen Catalog Number:

AG1570

GenBank Accession Number:

BC005044

GeneID (NCBI):

4778

UNIPROT ID:

Q16621

Full Name:

nuclear factor (erythroid-derived 2),
45kDa

Calculated MW:

41 kDa

Observed MW:

45 kDa

Purification Method:

Protein A purification

CloneNo.:

1D7C8

Recommended Dilutions:

WB 1:1000-1:8000

Applications

Tested Applications:

WB, ELISA

Species Specificity:

human

Positive Controls:

WB : HL-60 cells, K-562 cells

Background Information

The transcription factor p45 nuclear factor-erythroid-derived 2(NFE2) is one component of the NF-E2 complex that essential for regulating erythroid and megakaryocytic maturation and differentiation. It also plays crucial roles in erythroid and megakaryocytic lineages. NFE2 recognizes the TCAT/C sequence of the AP-1-like core palindrome present in a number of erythroid and megakaryocytic gene promoters, and acts as a activator. And it may has a role in all aspects of hemoglobin production from globin and heme synthesis to procurement of iron.

Storage

Storage:

Store at -20°C. Stable for one year after shipment.

Storage Buffer:

PBS with 0.02% sodium azide and 50% glycerol pH 7.3.

Aliquoting is unnecessary for -20°C storage

*** 20ul sizes contain 0.1% BSA

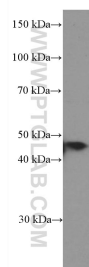
For technical support and original validation data for this product please contact:

T: 1 (888) 4PTGLAB (1-888-478-4522) (toll free
in USA), or 1(312) 455-8498 (outside USA)

E: proteintech@ptglab.com
W: ptglab.com

This product is exclusively available under Proteintech Group brand and is not available to purchase from any other manufacturer.

Selected Validation Data



HL-60 cells were subjected to SDS PAGE followed by western blot with 66436-1-Ig (NFE2 Antibody) at dilution of 1:4000 incubated at room temperature for 1.5 hours.