

For Research Use Only

PEBP1 Monoclonal antibody, PBS Only



Catalog Number: 66438-1-PBS

Basic Information

Catalog Number: 66438-1-PBS	GenBank Accession Number: BC008714	Purification Method: Protein G purification
Size: 100ug , Concentration: 1mg/ml by Nanodrop;	GeneID (NCBI): 5037	CloneNo.: 2D4D11
Source: Mouse	UNIPROT ID: P30086	
Isotype: IgG1	Full Name: phosphatidylethanolamine binding protein 1	
Immunogen Catalog Number: AG0864	Calculated MW: 21 kDa	
	Observed MW: 23-27 kDa	

Applications

Tested Applications:
WB, IHC, Indirect ELISA

Species Specificity:
human, mouse, rat

Background Information

Raf kinase inhibitor protein (RKIP), also termed phosphatidylethanolamine binding protein PEBP1, was initially identified as a potent inhibitor of Raf-1/MEK/ERK, NF- κ B, and G-protein-coupled receptor signaling pathways. Later RKIP has been further identified as a metastasis suppressor and its loss of expression has been reported in various cancers. Its expression has been proposed as a prognostic marker for patients diagnosed with the above cancers.

Storage

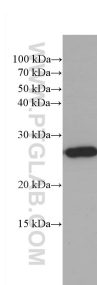
Storage:
Store at -80°C.

Storage Buffer:
PBS Only

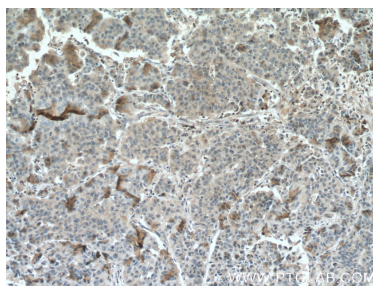
For technical support and original validation data for this product please contact:
T: 1 (888) 4PTGLAB (1-888-478-4522) (toll free in USA), or 1(312) 455-8498 (outside USA)
E: proteintech@ptglab.com
W: ptglab.com

This product is exclusively available under Proteintech Group brand and is not available to purchase from any other manufacturer.

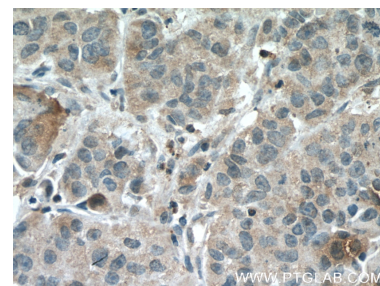
Selected Validation Data



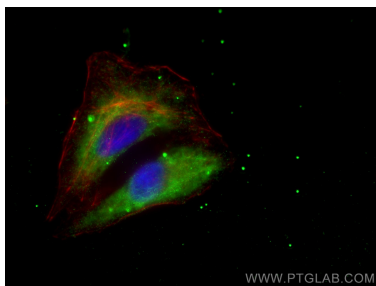
fetal human brain tissue were subjected to SDS PAGE followed by western blot with 66438-1-Ig (PEBP1 Antibody) at dilution of 1:3000 incubated at room temperature for 1.5 hours. This data was developed using the same antibody clone with 66438-1-PBS in a different storage buffer formulation.



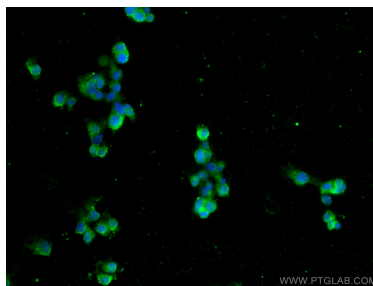
Immunohistochemical analysis of paraffin-embedded human prostate cancer tissue slide using 66438-1-Ig (PEBP1 Antibody) at dilution of 1:500 (under 10x lens). proteolytic pre-treatment mediated antigen retrieved with Tris-EDTA buffer (pH9). This data was developed using the same antibody clone with 66438-1-PBS in a different storage buffer formulation.



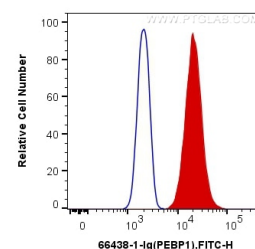
Immunohistochemical analysis of paraffin-embedded human prostate cancer tissue slide using 66438-1-Ig (PEBP1 Antibody) at dilution of 1:500 (under 40x lens). proteolytic pre-treatment mediated antigen retrieved with Tris-EDTA buffer (pH9). This data was developed using the same antibody clone with 66438-1-PBS in a different storage buffer formulation.



Immunofluorescent analysis of (-20°C Ethanol) fixed A549 cells using PEBP1 antibody (66438-1-Ig, Clone: 2D4D11) at dilution of 1:400 and CoraLite®488-Conjugated AffiniPure Goat Anti-Mouse IgG(H+L), CL594-Phalloidin (red). This data was developed using the same antibody clone with 66438-1-PBS in a different storage buffer formulation.



Immunofluorescent analysis of (4% PFA) fixed PC-12 cells using PEBP1 antibody (66438-1-Ig, Clone: 2D4D11) at dilution of 1:400 and CoraLite®488-Conjugated AffiniPure Goat Anti-Mouse IgG(H+L). This data was developed using the same antibody clone with 66438-1-PBS in a different storage buffer formulation.



1X10⁶ PC-12 cells were intracellularly stained with 0.4 ug Anti-Human PEBP1 (66438-1-Ig, Clone:2D4D11) and CoraLite®488-Conjugated AffiniPure Goat Anti-Mouse IgG(H+L) at dilution 1:1000 (red), or 0.4 ug Control Antibody. Cells were fixed with 4% PFA and permeabilized with Flow Cytometry Perm Buffer (PF00011-C). This data was developed using the same antibody clone with 66438-1-PBS in a different storage buffer formulation.