

For Research Use Only

CCM3/PDCD10 Monoclonal antibody

Catalog Number: 66440-1-Ig

Featured Product



Basic Information

Catalog Number:

66440-1-Ig

GenBank Accession Number:

BC002506

Purification Method:

Protein G purification

Size:

150ul, Concentration: 1300 ug/ml by Nanodrop and 1000 ug/ml by Bradford method using BSA as the standard;

GeneID (NCBI):

11235

CloneNo.:

1E5A8

Source:

Mouse

UNIPROT ID:

Q9BUL8

Recommended Dilutions:

WB 1:1000-1:6000

IHC 1:50-1:500

Isotype:

IgG1

Full Name:

programmed cell death 10

Calculated MW:

25 kDa

Immunogen Catalog Number:

AG0348

Observed MW:

25-30 kDa

Applications

Tested Applications:

WB, IHC, ELISA

Species Specificity:

human

Positive Controls:

WB : Jurkat cells, human peripheral blood platelets, Ramos cells, U-251 cells

IHC : human colon cancer tissue, human liver cancer tissue

Note-IHC: suggested antigen retrieval with TE buffer pH 9.0; (*) Alternatively, antigen retrieval may be performed with citrate buffer pH 6.0

Background Information

PDCD10, also named CCM3 and TFAR15, belongs to the PDCD10 family. PDCD10 promotes cell proliferation, increases MAPK activity and modulates apoptotic pathways. PDCD10 is important for cell migration and for normal structure and assembly of the Golgi complex. PDCD10 is required for normal angiogenesis, vasculogenesis and hematopoiesis during embryonic development, moreover, defects in PDCD10 showed abnormal cardiovascular development.

Storage

Storage:

Store at -20°C. Stable for one year after shipment.

Storage Buffer:

PBS with 0.02% sodium azide and 50% glycerol pH 7.3.

Aliquoting is unnecessary for -20°C storage

*** 20ul sizes contain 0.1% BSA

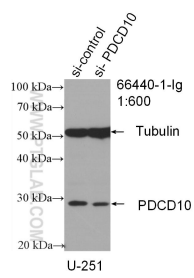
For technical support and original validation data for this product please contact:

T: 1 (888) 4PTGLAB (1-888-478-4522) (toll free in USA), or 1(312) 455-8498 (outside USA)

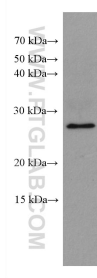
E: proteintech@ptglab.com
W: ptglab.com

This product is exclusively available under Proteintech Group brand and is not available to purchase from any other manufacturer.

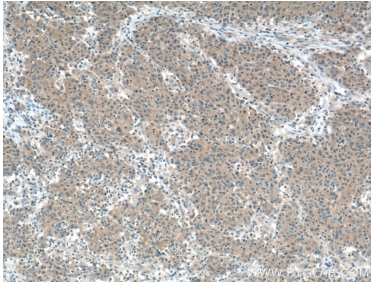
Selected Validation Data



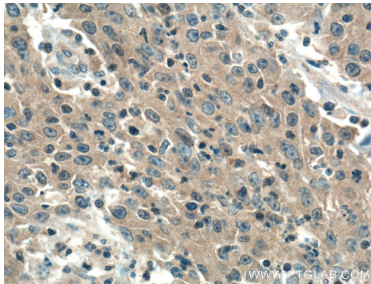
WB result of CCM3/PDCD10 antibody (66440-1-Ig; 1:600; incubated at room temperature for 1.5 hours) with sh-Control and sh-PDCD10 transfected U-251 cells.



Jurkat cells were subjected to SDS PAGE followed by western blot with 66440-1-Ig (CCM3/PDCD10 antibody) at dilution of 1:3000 incubated at room temperature for 1.5 hours.



Immunohistochemical analysis of paraffin-embedded human colon cancer tissue slide using 66440-1-Ig (CCM3/PDCD10 Antibody) at dilution of 1:200 (under 10x lens). Heat mediated antigen retrieval with Tris-EDTA buffer (pH 9.0).



Immunohistochemical analysis of paraffin-embedded human colon cancer tissue slide using 66440-1-Ig (PDCD10 Antibody) at dilution of 1:200 (under 40x lens). Heat mediated antigen retrieval with Tris-EDTA buffer (pH 9.0).