

For Research Use Only

# CBX3 Monoclonal antibody

Catalog Number: 66446-1-Ig **2 Publications**



## Basic Information

<b>Catalog Number:</b> 66446-1-Ig	<b>GenBank Accession Number:</b> BC000954	<b>Purification Method:</b> Protein A purification
<b>Size:</b> 150ul , Concentration: 1400 ug/ml by Nanodrop and 1000 ug/ml by Bradford method using BSA as the standard;	<b>GeneID (NCBI):</b> 11335	<b>CloneNo.:</b> 1A5A3
<b>Source:</b> Mouse	<b>UNIPROT ID:</b> Q13185	<b>Recommended Dilutions:</b> WB 1:2000-1:20000 IF/ICC 1:400-1:1600
<b>Isotype:</b> IgG2a	<b>Full Name:</b> chromobox homolog 3 (HP1 gamma homolog, Drosophila)	
<b>Immunogen Catalog Number:</b> AG19112	<b>Calculated MW:</b> 21 kDa	
	<b>Observed MW:</b> 22 kDa	

## Applications

<b>Tested Applications:</b> WB, IF/ICC, ELISA	<b>Positive Controls:</b>
<b>Cited Applications:</b> WB	<b>WB :</b> NIH/3T3 cells, HEK-293 cells, HeLa cells, Jurkat cells, RAW 264.7 cells
<b>Species Specificity:</b> human, mouse	<b>IF/ICC :</b> HepG2 cells,
<b>Cited Species:</b> human	

## Background Information

The family of Heterochromatin protein 1 (HP1) proteins is a family of highly conserved heterochromatin-associated non-histone chromosomal proteins, which has important functions in nucleus. These functions include gene activation or repression, regulation of binding of cohesion complexes to centromere, sequestration of genes to nuclear periphery, and heterochromatin formation and propagation. Much evidence shows that HP1 proteins interact with numerous proteins including methylated histones, histone methyltransferases and so on. CBX3 is one of the paralogues of HP1 proteins

## Notable Publications

Author	Pubmed ID	Journal	Application
Dan Wang	35659568	Int J Biochem Cell Biol	WB
Min Xie	39601498	Adv Biol (Weinh)	WB

## Storage

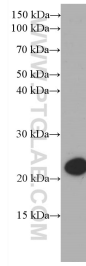
**Storage:**  
Store at -20°C. Stable for one year after shipment.  
**Storage Buffer:**  
PBS with 0.02% sodium azide and 50% glycerol pH 7.3.  
Aliquoting is unnecessary for -20°C storage

\*\*\* 20ul sizes contain 0.1% BSA

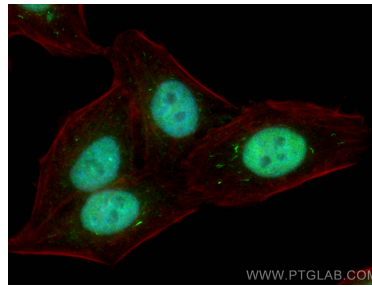
For technical support and original validation data for this product please contact:  
T: 1 (888) 4PTGLAB (1-888-478-4522) (toll free in USA), or 1(312) 455-8498 (outside USA)  
E: proteintech@ptglab.com  
W: ptglab.com

This product is exclusively available under Proteintech Group brand and is not available to purchase from any other manufacturer.

## Selected Validation Data



NIH/3T3 cells were subjected to SDS PAGE followed by western blot with 66446-1-Ig (CBX3 Antibody) at dilution of 1:5000 incubated at room temperature for 1.5 hours.



Immunofluorescent analysis of (4% PFA) fixed HepG2 cells using CBX3 antibody (66446-1-Ig, Clone: 1A5A3 ) at dilution of 1:800 and CoraLite®488-Conjugated Goat Anti-Mouse IgG(H+L), CL594-Phalloidin (red).