

For Research Use Only

CBX3 Monoclonal antibody

Catalog Number: 66446-1-Ig **1 Publications**



Basic Information

Catalog Number: 66446-1-Ig	GenBank Accession Number: BC000954	Purification Method: Protein A purification
Size: 150ul , Concentration: 1000 µg/ml by Bradford method using BSA as the standard;	GeneID (NCBI): 11335	CloneNo.: 1A5A3
Source: Mouse	Full Name: chromobox homolog 3 (HP1 gamma homolog, Drosophila)	Recommended Dilutions: WB 1:2000-1:20000 IF 1:50-1:500
Isotype: IgG2a	Calculated MW: 21 kDa	
Immunogen Catalog Number: AG19112	Observed MW: 22 kDa	

Applications

Tested Applications: IF, WB, ELISA	Positive Controls: WB : NIH/3T3 cells, HEK-293 cells, HeLa cells, Jurkat cells, RAW 264.7 cells
Cited Applications: WB	IF : HepG2 cells,
Species Specificity: human, mouse	
Cited Species: human	

Background Information

The family of Heterochromatin protein 1 (HP1) proteins is a family of highly conserved heterochromatin-associated non-histone chromosomal proteins, which has important functions in nucleus. These functions include gene activation or repression, regulation of binding of cohesion complexes to centromere, sequestration of genes to nuclear periphery, and heterochromatin formation and propagation. Much evidence shows that HP1 proteins interact with numerous proteins including methylated histones, histone methyltransferases and so on. CBX3 is one of the paralogues of HP1 proteins

Notable Publications

Author	Pubmed ID	Journal	Application
Dan Wang	35659568	Int J Biochem Cell Biol	WB

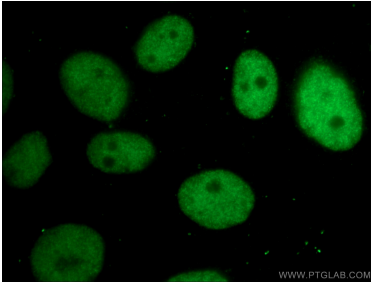
Storage

Storage:
Store at -20°C. Stable for one year after shipment.
Storage Buffer:
PBS with 0.02% sodium azide and 50% glycerol pH 7.3.
Aliquoting is unnecessary for -20°C storage

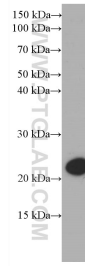
For technical support and original validation data for this product please contact:
T: 1 (888) 4PTGLAB (1-888-478-4522) (toll free in USA), or 1(312) 455-8498 (outside USA)
E: proteintech@ptglab.com
W: ptglab.com

This product is exclusively available under Proteintech Group brand and is not available to purchase from any other manufacturer.

Selected Validation Data



Immunofluorescent analysis of (4% PFA) fixed HepG2 cells using 66446-1-Ig (CBX3 antibody) at dilution of 1:100 and Alexa Fluor 488-conjugated AffiniPure Goat Anti-Mouse IgG(H+L).



NIH/3T3 cells were subjected to SDS PAGE followed by western blot with 66446-1-Ig (CBX3 Antibody) at dilution of 1:5000 incubated at room temperature for 1.5 hours.