

HLA-G Monoclonal antibody

Catalog Number: 66447-1-Ig **25 Publications**

Basic Information

Catalog Number: 66447-1-Ig	GenBank Accession Number: BC021708	Purification Method: Protein A purification
Size: 150ul , Concentration: 1300 ug/ml by Nanodrop and 1000 ug/ml by Bradford method using BSA as the standard;	GeneID (NCBI): 3135	CloneNo.: 1E5A10
Source: Mouse	UNIPROT ID: P17693	Recommended Dilutions: WB 1:2000-1:20000 IHC 1:50-1:500
Isotype: IgG2b	Full Name: major histocompatibility complex, class I, G	
Immunogen Catalog Number: AG10839	Calculated MW: 338 aa, 38 kDa	
	Observed MW: 33-45 kDa	

Applications

Tested Applications: WB, IHC, ELISA	Positive Controls:
Cited Applications: WB, IHC, IF	WB : human placenta tissue,
Species Specificity: human	IHC : human placenta tissue,
Cited Species: human	

Note-IHC: suggested antigen retrieval with TE buffer pH 9.0; (*) Alternatively, antigen retrieval may be performed with citrate buffer pH 6.0

Background Information

Human major histocompatibility complex (MHC) antigens, also referred to as human leukocyte antigens (HLA), are encoded by genes located on the short arm of chromosome 6 (6p21.3). HLA-G is a non-classical MHC class I molecule with multiple immunoregulatory properties. HLA-G exhibits a restricted pattern of expression that includes placental extravillous trophoblasts at the maternal-fetal interface, where it abolishes maternal immune cell activity against fetus and establishes immune tolerance. Aberrant expression of HLA-G has been found in a variety of human neoplastic diseases. It plays an important role in the escape of tumor cells from immunosurveillance.

Notable Publications

Author	Pubmed ID	Journal	Application
Liling Xiong	34605151	Aging Cell	IHC,IF
Manni Sun	33205477	FASEB J	IHC
Jingmei Ma	36420138	Front Cell Dev Biol	IHC,IF

Storage

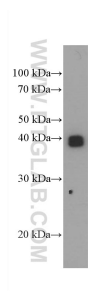
Storage:
Store at -20°C. Stable for one year after shipment.
Storage Buffer:
PBS with 0.02% sodium azide and 50% glycerol, pH7.3
 Aliquoting is unnecessary for -20°C storage

*** 20ul sizes contain 0.1% BSA

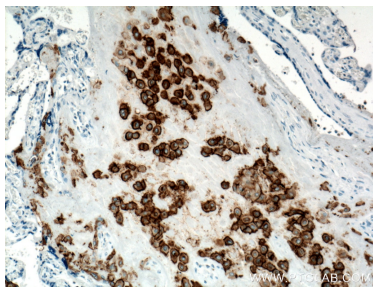
For technical support and original validation data for this product please contact:
 T: 1 (888) 4PTGLAB (1-888-478-4522) (toll free in USA), or 1(312) 455-8498 (outside USA)
 E: proteintech@ptglab.com
 W: ptglab.com

This product is exclusively available under Proteintech Group brand and is not available to purchase from any other manufacturer.

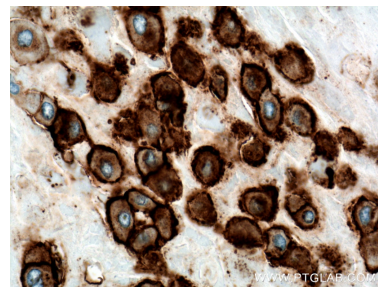
Selected Validation Data



human placenta tissue were subjected to SDS PAGE followed by western blot with 66447-1-Ig (HLA-G Antibody) at dilution of 1:5000 incubated at room temperature for 1.5 hours.



Immunohistochemical analysis of paraffin-embedded human placenta tissue slide using 66447-1-Ig (HLA-G Antibody) at dilution of 1:400 (under 10x lens). Heat mediated antigen retrieval with Tris-EDTA buffer (pH 9.0).



Immunohistochemical analysis of paraffin-embedded human placenta tissue slide using 66447-1-Ig (HLA-G Antibody) at dilution of 1:400 (under 40x lens). Heat mediated antigen retrieval with Tris-EDTA buffer (pH 9.0).