

For Research Use Only

CP110 Monoclonal antibody

Catalog Number: 66448-1-Ig **2 Publications**



Basic Information

Catalog Number: 66448-1-Ig	GenBank Accession Number: BC036654	Purification Method: Protein A purification
Size: 150ul , Concentration: 1500 ug/ml by Nanodrop and 1000 ug/ml by Bradford method using BSA as the standard;	GeneID (NCBI): 9738	CloneNo.: 1A3C12
Source: Mouse	UNIPROT ID: O43303	Recommended Dilutions: WB 1:1000-1:4000
Isotype: IgG2a	Full Name: CP110 protein	
Immunogen Catalog Number: AG3489	Calculated MW: 991 aa, 111 kDa	
	Observed MW: 110 kDa	

Applications

Tested Applications: WB, ELISA	Positive Controls: WB : HeLa cells, HEK-293 cells, K-562 cells, Jurkat cells, U2OS cells, HL-60 cells
Cited Applications: IF, IHC	
Species Specificity: human	
Cited Species: human, mouse	

Background Information

CP110, also named as CCP110 and KIAA0419, is an 110kDa protein. This gene is different to the gene CEP110 (geneID:11064; CNTRL). CP110 is a centriolar protein that positively regulates centriole duplication while restricting centriole elongation and ciliogenesis. And it acts as a key negative regulator of ciliogenesis in collaboration with CEP97 by capping the mother centriole thereby preventing cilia formation.

Notable Publications

Author	Pubmed ID	Journal	Application
Rachel E Turn	34818063	Mol Biol Cell	IHC
Skylar I Dewees	35196065	Mol Biol Cell	IF

Storage

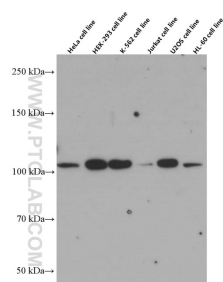
Storage:
Store at -20°C. Stable for one year after shipment.
Storage Buffer:
PBS with 0.02% sodium azide and 50% glycerol pH 7.3.
Aliquoting is unnecessary for -20°C storage

*** 20ul sizes contain 0.1% BSA

For technical support and original validation data for this product please contact:
T: 1 (888) 4PTGLAB (1-888-478-4522) (toll free in USA), or 1(312) 455-8498 (outside USA)
E: proteintech@ptglab.com
W: ptglab.com

This product is exclusively available under Proteintech Group brand and is not available to purchase from any other manufacturer.

Selected Validation Data



Various lysates were subjected to SDS PAGE followed by western blot with 66448-1-Ig (CP110 Antibody) at dilution of 1:2000 incubated at room temperature for 1.5 hours.