

For Research Use Only

# SERPINA7 Monoclonal antibody

Catalog Number: 66454-1-Ig **1 Publications**



## Basic Information

<b>Catalog Number:</b> 66454-1-Ig	<b>GenBank Accession Number:</b> BC020747	<b>Purification Method:</b> Protein A purification
<b>Size:</b> 150ul , Concentration: 1700 ug/ml by 6906 Nanodrop and 1000 ug/ml by Bradford method using BSA as the standard;	<b>GeneID (NCBI):</b> 6906	<b>CloneNo.:</b> 1B11B10
<b>Source:</b> Mouse	<b>UNIPROT ID:</b> P05543	<b>Recommended Dilutions:</b> WB 1:1000-1:4000 IHC 1:250-1:1000 IF-P 1:200-1:800
<b>Isotype:</b> IgG2a	<b>Full Name:</b> serpin peptidase inhibitor, clade A (alpha-1 antiproteinase, antitrypsin), member 7	
<b>Immunogen Catalog Number:</b> AG9823	<b>Calculated MW:</b> 415 aa, 46 kDa	
	<b>Observed MW:</b> 50 kDa	

## Applications

<b>Tested Applications:</b> WB, IHC, IF-P, ELISA	<b>Positive Controls:</b>
<b>Cited Applications:</b> IHC	<b>WB :</b> human plasma tissue, human testis tissue
<b>Species Specificity:</b> human, mouse, pig, rat	<b>IHC :</b> human liver cancer tissue, mouse liver tissue
<b>Cited Species:</b> human	<b>IF-P :</b> human liver cancer tissue,
<b>Note-IHC: suggested antigen retrieval with TE buffer pH 9.0; (*) Alternatively, antigen retrieval may be performed with citrate buffer pH 6.0</b>	

## Notable Publications

Author	Pubmed ID	Journal	Application
Lingyan Chen	38027820	Heliyon	IHC

## Storage

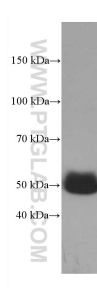
**Storage:**  
Store at -20°C. Stable for one year after shipment.  
**Storage Buffer:**  
PBS with 0.02% sodium azide and 50% glycerol pH 7.3.  
Aliquoting is unnecessary for -20°C storage

\*\*\* 20ul sizes contain 0.1% BSA

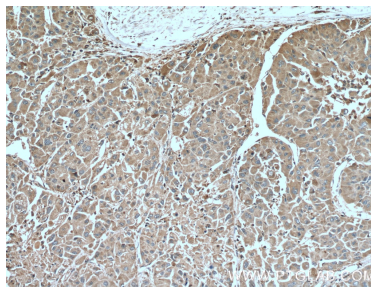
For technical support and original validation data for this product please contact:  
T: 1 (888) 4PTGLAB (1-888-478-4522) (toll free in USA), or 1(312) 455-8498 (outside USA)  
E: [proteintech@ptglab.com](mailto:proteintech@ptglab.com)  
W: [ptglab.com](http://ptglab.com)

This product is exclusively available under Proteintech Group brand and is not available to purchase from any other manufacturer.

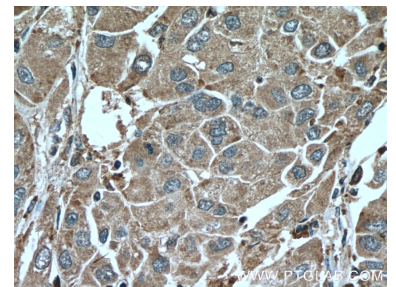
## Selected Validation Data



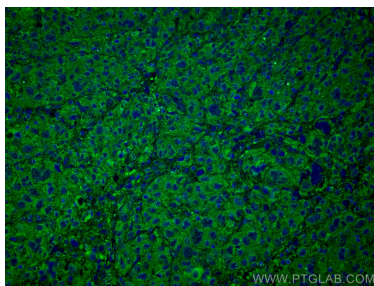
human plasma were subjected to SDS PAGE followed by western blot with 66454-1-Ig (SERPINA7 antibody) at dilution of 1:2000 incubated at room temperature for 1.5 hours.



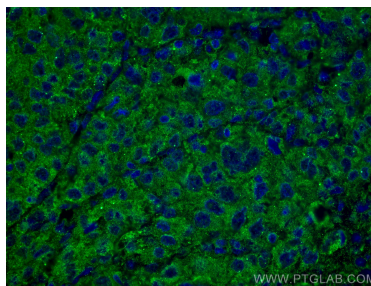
Immunohistochemical analysis of paraffin-embedded human liver cancer tissue slide using 66454-1-Ig (SERPINA7 antibody) at dilution of 1:500 (under 10x lens. Heat mediated antigen retrieval with Tris-EDTA buffer (pH 9.0).



Immunohistochemical analysis of paraffin-embedded human liver cancer tissue slide using 66454-1-Ig (SERPINA7 antibody) at dilution of 1:500 (under 40x lens. Heat mediated antigen retrieval with Tris-EDTA buffer (pH 9.0).



Immunofluorescent analysis of (4% PFA) fixed human liver cancer tissue using SERPINA7 antibody (66454-1-Ig, Clone: 1B11B10 ) at dilution of 1:400 and CoraLite®488-Conjugated AffiniPure Goat Anti-Mouse IgG(H+L).



Immunofluorescent analysis of (4% PFA) fixed human liver cancer tissue using SERPINA7 antibody (66454-1-Ig, Clone: 1B11B10 ) at dilution of 1:400 and CoraLite®488-Conjugated AffiniPure Goat Anti-Mouse IgG(H+L).