

For Research Use Only

GABARAPL1 Monoclonal antibody

Catalog Number: 66458-1-Ig

Featured Product

2 Publications



Basic Information

Catalog Number:

66458-1-Ig

Size:

150ul, Concentration: 1200 ug/ml by Nanodrop and 1000 ug/ml by Bradford method using BSA as the standard;

Source:

Mouse

Isotype:

IgG1

Immunogen Catalog Number:

AG1473

GenBank Accession Number:

BC009309

GeneID (NCBI):

23710

UNIPROT ID:

Q9HOR8

Full Name:

GABA(A) receptor-associated protein like 1

Calculated MW:

14 kDa

Observed MW:

16-18 kDa

Purification Method:

Protein A purification

CloneNo.:

1E10F6

Recommended Dilutions:

WB 1:1000-1:4000

IF/ICC 1:300-1:1200

Applications

Tested Applications:

WB, IF/ICC, ELISA

Cited Applications:

WB, IF

Species Specificity:

human, mouse, rat, pig

Cited Species:

human

Positive Controls:

WB: mouse brain tissue, rat brain tissue, pig brain tissue

IF/ICC: HepG2 cells,

Background Information

GABARAPL1 (GABARAP-like protein 1), also named ATG8, GEC1, APG8L, ATG8L, and APG8-LIKE, is a member of the GABARP (GABAA receptor-associated protein) family. GABARAPL1 was initially identified as an estrogen-regulated gene and the protein acts in receptor and vesicle transport. It's also involved in the process of autophagy like GABARAP and GABARAPL2 and may be considered as an autophagic marker. It is expressed at very high levels in the brain, heart, peripheral blood leukocytes, liver, kidney, placenta, and skeletal muscle and at very low levels in the thymus and small intestine.

Notable Publications

Author	Pubmed ID	Journal	Application
Xiaopeng Huang	38234672	Iran J Basic Med Sci	WB
Mai Tram Vo	37459327	PLoS Pathog	WB,IF

Storage

Storage:

Store at -20°C. Stable for one year after shipment.

Storage Buffer:

PBS with 0.02% sodium azide and 50% glycerol pH 7.3.

Aliquoting is unnecessary for -20°C storage

*** 20ul sizes contain 0.1% BSA

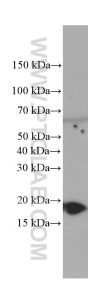
For technical support and original validation data for this product please contact:

T: 1 (888) 4PTGLAB (1-888-478-4522) (toll free in USA), or 1(312) 455-8498 (outside USA)

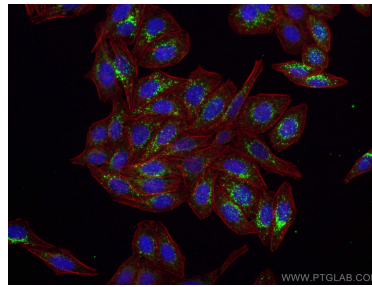
E: proteintech@ptglab.com
W: ptglab.com

This product is exclusively available under Proteintech Group brand and is not available to purchase from any other manufacturer.

Selected Validation Data



mouse brain tissue were subjected to SDS PAGE followed by western blot with 66458-1-Ig (GABARAPL1 antibody) at dilution of 1:2000 incubated at room temperature for 1.5 hours.



Immunofluorescent analysis of (-20°C Ethanol) fixed HepG2 cells using GABARAPL1 antibody (66458-1-Ig, Clone: 1E10F6) at dilution of 1:600 and CoraLite®488-Conjugated AffiniPure Goat Anti-Mouse IgG(H+L), CL594-Phalloidin (red).