

For Research Use Only

GABARAPL1 Monoclonal antibody

Catalog Number: 66458-1-Ig

Featured Product

2 Publications



Basic Information

Catalog Number: 66458-1-Ig	GenBank Accession Number: BC009309	Purification Method: Protein G purification
Size: 150ul , Concentration: 1200 ug/ml by Nanodrop and 1000 ug/ml by Bradford method using BSA as the standard;	GeneID (NCBI): 23710	CloneNo.: 1E10F6
Source: Mouse	UNIPROT ID: Q9HOR8	Recommended Dilutions: WB 1:1000-1:4000 IF/ICC 1:300-1:1200
Isotype: IgG1	Full Name: GABA(A) receptor-associated protein like 1	
Immunogen Catalog Number: AG1473	Calculated MW: 14 kDa	
	Observed MW: 16-18 kDa	

Applications

Tested Applications: WB, IF/ICC, ELISA	Positive Controls: WB : mouse brain tissue, rat brain tissue, pig brain tissue IF/ICC : HepG2 cells,
Cited Applications: WB, IF	
Species Specificity: human, mouse, rat, pig	
Cited Species: human	

Background Information

GABARAPL1 (GABARAP-like protein 1), also named ATG8, GEC1, APG8L, ATG8L, and APG8-LIKE, is a member of the GABARP (GABAA receptor-associated protein) family. GABARAPL1 was initially identified as an estrogen-regulated gene and the protein acts in receptor and vesicle transport. It's also involved in the process of autophagy like GABARAP and GABARAPL2 and may be considered as an autophagic marker. It is expressed at very high levels in the brain, heart, peripheral blood leukocytes, liver, kidney, placenta, and skeletal muscle and at very low levels in the thymus and small intestine.

Notable Publications

Author	Pubmed ID	Journal	Application
Xiaopeng Huang	38234672	Iran J Basic Med Sci	WB
Mai Tram Vo	37459327	PLoS Pathog	WB,IF

Storage

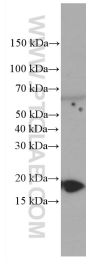
Storage:
Store at -20°C. Stable for one year after shipment.
Storage Buffer:
PBS with 0.02% sodium azide and 50% glycerol, pH7.3
Aliquoting is unnecessary for -20°C storage

*** 20ul sizes contain 0.1% BSA

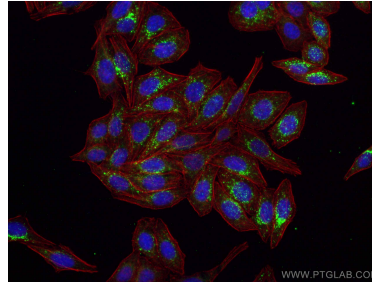
For technical support and original validation data for this product please contact:
T: 1 (888) 4PTGLAB (1-888-478-4522) (toll free in USA), or 1(312) 455-8498 (outside USA)
E: proteintech@ptglab.com
W: ptglab.com

This product is exclusively available under Proteintech Group brand and is not available to purchase from any other manufacturer.

Selected Validation Data



mouse brain tissue were subjected to SDS PAGE followed by western blot with 66458-1-Ig (GABARAPL1 antibody) at dilution of 1:2000 incubated at room temperature for 1.5 hours.



Immunofluorescent analysis of (-20°C Ethanol) fixed HepG2 cells using GABARAPL1 antibody (66458-1-Ig, Clone: 1E10F6) at dilution of 1:600 and CoraLite®488-Conjugated AffiniPure Goat Anti-Mouse IgG(H+L), CL594-Phalloidin (red).