

For Research Use Only

# SLP76 Monoclonal antibody

Catalog Number: 66465-1-Ig **1 Publications**



## Basic Information

<b>Catalog Number:</b> 66465-1-Ig	<b>GenBank Accession Number:</b> BC016618	<b>Purification Method:</b> Protein A purification
<b>Size:</b> 150ul , Concentration: 1600 ug/ml by Nanodrop and 1000 ug/ml by Bradford method using BSA as the standard;	<b>GeneID (NCBI):</b> 3937	<b>CloneNo.:</b> 4H10B1
<b>Source:</b> Mouse	<b>UNIPROT ID:</b> Q13094	<b>Recommended Dilutions:</b> WB 1:5000-1:50000 IF/ICC 1:400-1:1600
<b>Isotype:</b> IgG1	<b>Full Name:</b> lymphocyte cytosolic protein 2 (SH2 domain containing leukocyte protein of 76kDa)	
<b>Immunogen Catalog Number:</b> AG3432	<b>Calculated MW:</b> 533 aa, 60 kDa	
	<b>Observed MW:</b> 76 kDa	

## Applications

<b>Tested Applications:</b> WB, IF/ICC, FC (Intra), ELISA	<b>Positive Controls:</b> WB : Jurkat cells, K-562 cells, MOLT-4 cells
<b>Species Specificity:</b> human	<b>IF/ICC :</b> HeLa cells,
<b>Cited Species:</b> human	

## Background Information

LCP2, also named as SLP76, is an adapter protein that acts as a substrate of the T cell antigen receptor (TCR)-activated protein tyrosine kinase pathway. It contains an N-terminal leucine Zip motif, a tyrosine-rich domain, a proline-rich domain and a C-terminal SH2 domain. It is constitutively associated with the growth factor receptor-bound protein 2 (Grb2)-related adapter protein 2 (Grap2, a.k.a. GADS) through the interaction of its proline residues with one of the SH3 domains of Grap2. SLP76 associates with growth factor receptor bound protein 2 (Grap2), and is thought to play a role TCR-mediated intracellular signal transduction. SLP76 is also expressed by mast cells, and mast cell activation was markedly impaired in SLP76-deficient mice.

## Notable Publications

Author	Pubmed ID	Journal	Application
Jingjing Peng	39303515	Eur J Med Chem	

## Storage

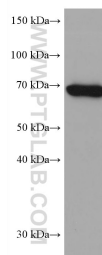
**Storage:**  
Store at -20°C. Stable for one year after shipment.  
**Storage Buffer:**  
PBS with 0.02% sodium azide and 50% glycerol pH 7.3.  
**Aliquoting is unnecessary for -20°C storage**

\*\*\* 20ul sizes contain 0.1% BSA

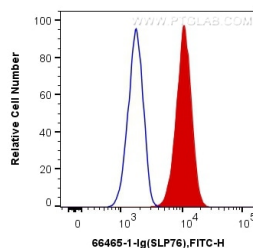
For technical support and original validation data for this product please contact:  
T: 1 (888) 4PTGLAB (1-888-478-4522) (toll free in USA), or 1(312) 455-8498 (outside USA)  
E: [proteintech@ptglab.com](mailto:proteintech@ptglab.com)  
W: [ptglab.com](http://ptglab.com)

This product is exclusively available under Proteintech Group brand and is not available to purchase from any other manufacturer.

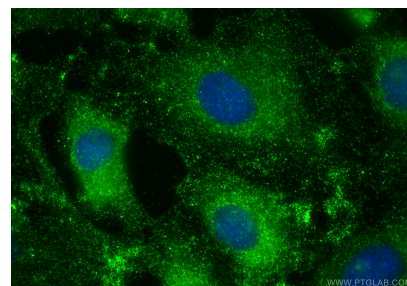
## Selected Validation Data



Jurkat cells were subjected to SDS PAGE followed by western blot with 66465-1-Ig (SLP76 antibody) at dilution of 1:10000 incubated at room temperature for 1.5 hours.



1X10<sup>6</sup> Jurkat cells were intracellularly stained with 0.4 ug Anti-Human SLP76 (66465-1-Ig, Clone:4H10B1) and CoraLite®488-Conjugated AffiniPure Goat Anti-Mouse IgG(H+L) at dilution 1:1000 (red), or 0.4 ug Control Antibody. Cells were fixed with 4% PFA and permeabilized with Flow Cytometry Perm Buffer (PF00011-C).



Immunofluorescent analysis of (-20°C Ethanol) fixed HeLa cells using SLP76 antibody (66465-1-Ig, Clone: 4H10B1 ) at dilution of 1:800 and CoraLite®488-Conjugated Goat Anti-Mouse IgG(H+L) (SA00013-1).