

For Research Use Only

# rabbit Heavy chain of Rabbit IgG Monoclonal antibody



Catalog Number: 66467-1-Ig **3 Publications**

## Basic Information

**Catalog Number:** 66467-1-Ig  
**Size:** 150ul , Concentration: 1957 µg/ml by Nanodrop and 1000 µg/ml by Bradford method using BSA as the standard;  
**Source:** Mouse  
**Isotype:** IgG1

**GenBank Accession Number:**  
**GeneID (NCBI):** N/A  
**UNIPROT ID:** N/A  
**Full Name:**  
**Observed MW:** 50-55 kDa

**Purification Method:** Protein G purification  
**CloneNo.:** 1C9A5  
**Recommended Dilutions:** WB 1:1000-1:4000

## Applications

**Tested Applications:** WB, ELISA  
**Cited Applications:** IF, WB  
**Species Specificity:** rabbit  
**Cited Species:** human, rat, mouse

**Positive Controls:**  
WB : rabbit serum tissue,

## Background Information

This antibody specifically recognizes the heavy chain of Rabbit IgG.

## Notable Publications

Author	Pubmed ID	Journal	Application
Bing Zhu	31788110	Oncol Lett	
Bo Huang	38237745	Genomics	IF
Lei Wang	37979663	Pharmacol Res	WB

## Storage

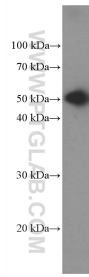
**Storage:** Store at -20°C. Stable for one year after shipment.  
**Storage Buffer:** PBS with 0.02% sodium azide and 50% glycerol pH 7.3.  
Aliquoting is unnecessary for -20°C storage

\*\*\* 20ul sizes contain 0.1% BSA

For technical support and original validation data for this product please contact:  
T: 1 (888) 4PTGLAB (1-888-478-4522) (toll free in USA), or 1(312) 455-8498 (outside USA)  
E: proteintech@ptglab.com  
W: ptglab.com

This product is exclusively available under Proteintech Group brand and is not available to purchase from any other manufacturer.

## Selected Validation Data



rabbit serum (10nL) were subjected to SDS PAGE followed by western blot with 66467-1-Ig (mouse McAb to Heavy chain of Rabbit IgG) at dilution of 1:2000 incubated at room temperature for 1.5 hours.