

For Research Use Only

# PSAP Monoclonal antibody

Catalog Number: 66473-1-Ig

Featured Product



## Basic Information

Catalog Number:

66473-1-Ig

Size:

150ul, Concentration: 1300 ug/ml by Nanodrop and 987 ug/ml by Bradford method using BSA as the standard;

Source:

Mouse

Isotype:

IgG1

Immunogen Catalog Number:

AG1194

GenBank Accession Number:

BC001503

GeneID (NCBI):

5660

UNIPROT ID:

P07602

Full Name:

prosaposin

Calculated MW:

58 kDa

Observed MW:

70 kDa

Purification Method:

Protein G purification

CloneNo.:

2F11B2

Recommended Dilutions:

WB 1:2500-1:10000

IHC 1:150-1:600

IF-P 1:200-1:800

IF/ICC 1:200-1:800

## Applications

Tested Applications:

WB, IHC, IF/ICC, IF-P, ELISA

Species Specificity:

human

**Note-IHC: suggested antigen retrieval with TE buffer pH 9.0; (\*) Alternatively, antigen retrieval may be performed with citrate buffer pH 6.0**

Positive Controls:

WB : human milk tissue, human milk, HepG2 cells, PC-3 cells, HeLa cells

IHC : human prostate cancer tissue,

IF-P : human prostate cancer tissue,

IF/ICC : HeLa cells,

## Storage

Storage:

Store at -20°C. Stable for one year after shipment.

Storage Buffer:

PBS with 0.02% sodium azide and 50% glycerol pH 7.3.

Aliquoting is unnecessary for -20°C storage

\*\*\* 20ul sizes contain 0.1% BSA

For technical support and original validation data for this product please contact:

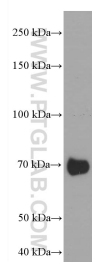
T: 1 (888) 4PTGLAB (1-888-478-4522) (toll free in USA), or 1(312) 455-8498 (outside USA)

E: [proteintech@ptglab.com](mailto:proteintech@ptglab.com)

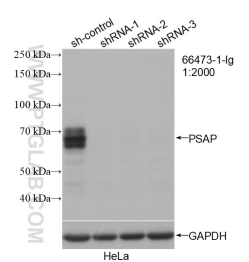
W: [ptglab.com](http://ptglab.com)

This product is exclusively available under Proteintech Group brand and is not available to purchase from any other manufacturer.

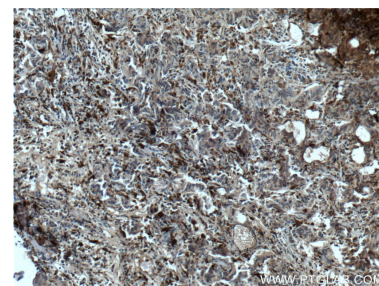
## Selected Validation Data



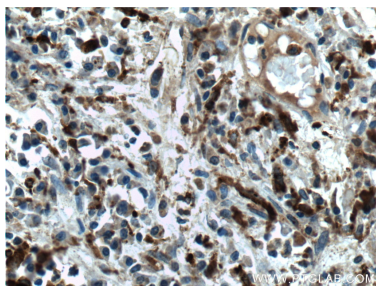
human milk were subjected to SDS PAGE followed by western blot with 66473-1-Ig (PSAP antibody) at dilution of 1:5000 incubated at room temperature for 1.5 hours.



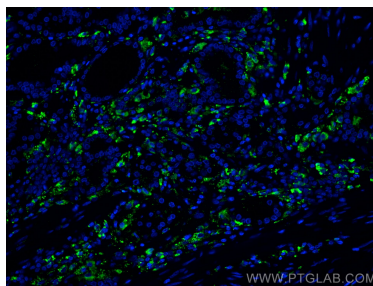
WB result of PSAP antibody (66473-1-Ig; 1:2000; incubated at room temperature for 1.5 hours) with sh-Control and sh-PSAP transfected HeLa cells.



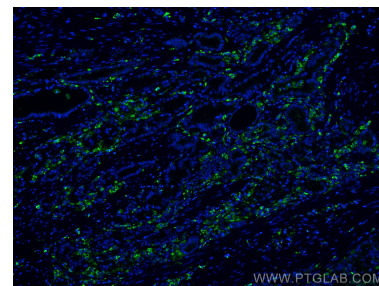
Immunohistochemical analysis of paraffin-embedded human prostate cancer tissue slide using 66473-1-Ig (PSAP antibody) at dilution of 1:300 (under 10x lens. Heat mediated antigen retrieval with Tris-EDTA buffer (pH 9.0).



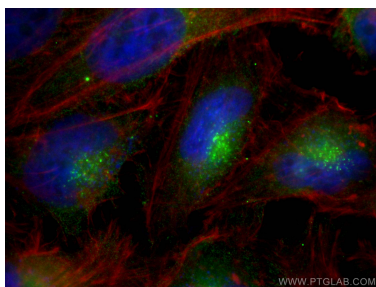
Immunohistochemical analysis of paraffin-embedded human prostate cancer tissue slide using 66473-1-Ig (PSAP antibody) at dilution of 1:300 (under 40x lens. Heat mediated antigen retrieval with Tris-EDTA buffer (pH 9.0).



Immunofluorescent analysis of (4% PFA) fixed human prostate cancer tissue using PSAP antibody (66473-1-Ig, Clone: 2F11B2) at dilution of 1:400 and CoraLite® 488-Conjugated AffiniPure Goat Anti-Mouse IgG(H+L).



Immunofluorescent analysis of (4% PFA) fixed human prostate cancer tissue using PSAP antibody (66473-1-Ig, Clone: 2F11B2) at dilution of 1:400 and CoraLite® 488-Conjugated AffiniPure Goat Anti-Mouse IgG(H+L).



Immunofluorescent analysis of (4% PFA) fixed HeLa cells using PSAP antibody (66473-1-Ig, Clone: 2F11B2) at dilution of 1:400 and Multi-rAb CoraLite® Plus 488-Goat Anti-Mouse Recombinant Secondary Antibody (H+L) (RGAM002), CL594-phalloidin (red).