

For Research Use Only

# SOD2 Monoclonal antibody, PBS Only (Capture)

Catalog Number: 66474-2-PBS



## Basic Information

|   |  |   |
|---|--|---|
| <b>Catalog Number:</b><br>66474-2-PBS                       | <b>GenBank Accession Number:</b><br>BC016934               | <b>Purification Method:</b><br>Protein G purification |
| <b>Size:</b><br>100ug , Concentration: 1 mg/ml by Nanodrop; | <b>GeneID (NCBI):</b><br>6648                              | <b>CloneNo.:</b><br>2B3B7                             |
| <b>Source:</b><br>Mouse                                     | <b>UNIPROT ID:</b><br>P04179                               |   |
| <b>Isotype:</b><br>IgG1                                     | <b>Full Name:</b><br>superoxide dismutase 2, mitochondrial |   |
| <b>Immunogen Catalog Number:</b><br>AG21388                 | <b>Calculated MW:</b><br>25 kDa                            |   |

## Applications

**Tested Applications:**  
Cytometric bead array, Sandwich ELISA, Indirect ELISA, Sample test

**Species Specificity:**  
human

## Product Information

66474-2-PBS targets SOD2 as part of a matched antibody pair:

MP50535-1: 66474-2-PBS capture and 66474-3-PBS detection (validated in Cytometric bead array)

MP50535-2: 66474-2-PBS capture and 66474-4-PBS detection (validated in Cytometric bead array, Sandwich ELISA)

Unconjugated mouse monoclonal antibody pair in PBS only (BSA and azide free) storage buffer at a concentration of 1 mg/mL, ready for conjugation.

This conjugation ready format makes antibodies ideal for use in many applications including: ELISAs, multiplex assays requiring matched pairs, mass cytometry, and multiplex imaging applications. Antibody use should be optimized by the end user for each application and assay.

## Storage

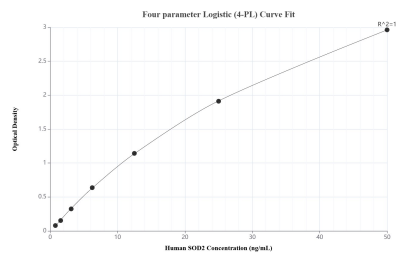
**Storage:**  
Store at -80°C.

**Storage Buffer:**  
PBS Only

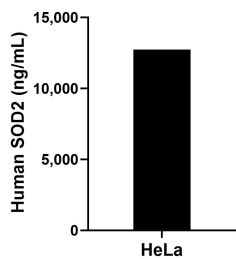
For technical support and original validation data for this product please contact:  
T: 1 (888) 4PTGLAB (1-888-478-4522) (toll free in USA), or 1(312) 455-8498 (outside USA)  
E: [proteintech@ptglab.com](mailto:proteintech@ptglab.com)  
W: [ptglab.com](http://ptglab.com)

This product is exclusively available under Proteintech Group brand and is not available to purchase from any other manufacturer.

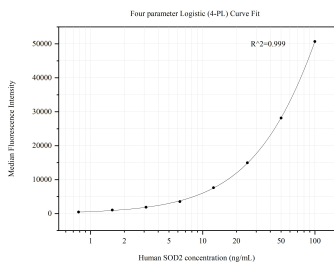
## Selected Validation Data



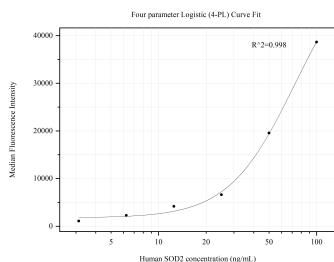
Sandwich ELISA standard curve of MP50535-2, Human SOD2 Monoclonal Matched Antibody Pair - PBS only. 66474-2-PBS was coated to a plate as the capture antibody and incubated with serial dilutions of standard Ag21388. 66474-4-PBS was HRP conjugated as the detection antibody. Range: 0.781-50 ng/mL



The mean SOD2 concentration was determined to be 12,745.00 ng/mL in HeLa cell extract based on a 1.80 mg/mL extract load.



Cytometric bead array standard curve of MP50535-1, SOD2 Monoclonal Matched Antibody Pair, PBS Only. Capture antibody: 66474-2-PBS. Detection antibody: 66474-3-PBS. Standard:Ag21388. Range: 0.781-100 ng/mL



Cytometric bead array standard curve of MP50535-2, SOD2 Monoclonal Matched Antibody Pair, PBS Only. Capture antibody: 66474-2-PBS. Detection antibody: 66474-4-PBS. Standard:Ag21388. Range: 3.125-100 ng/mL