

For Research Use Only

# EIF2A/CDA02 Monoclonal antibody

Catalog Number: 66482-1-Ig

Featured Product

2 Publications



## Basic Information

Catalog Number:

66482-1-Ig

Size:

150ul, Concentration: 1000 ug/ml by Nanodrop and 413 ug/ml by Bradford method using BSA as the standard;

Source:

Mouse

Isotype:

IgG1

Immunogen Catalog Number:

AG22041

GenBank Accession Number:

BC011885

GeneID (NCBI):

83939

UNIPROT ID:

Q9BY44

Full Name:

eukaryotic translation initiation factor 2A, 65kDa

Calculated MW:

65 kDa

Observed MW:

65 kDa

Purification Method:

Protein A purification

CloneNo.:

1G7H4

Recommended Dilutions:

WB 1:5000-1:50000

IHC 1:150-1:600

IF/ICC 1:200-1:800

## Applications

Tested Applications:

WB, IHC, IF/ICC, ELISA

Cited Applications:

WB

Species Specificity:

human, mouse, rat

Cited Species:

human

**Note-IHC: suggested antigen retrieval with TE buffer pH 9.0; (\*) Alternatively, antigen retrieval may be performed with citrate buffer pH 6.0**

Positive Controls:

WB : A431 cells, ROS1728 cells, HEK-293 cells, HeLa cells, HepG2 cells, K-562 cells, Jurkat cells, HSC-T6 cells

IHC : human prostate cancer tissue,

IF/ICC : HepG2 cells,

## Background Information

EIF2A, also named as CDA02, MSTP004 and MSTP089, belongs to the WD repeat EIF2A family. It functions in the early steps of protein synthesis of a small number of specific mRNAs. EIF2A, an alternative initiator tRNA-binding protein, has a key role in the translation of HCV mRNA during HCV infection, in turn promoting eIF2a phosphorylation by activating the eIF2a kinase PKR.

## Notable Publications

Author	Pubmed ID	Journal	Application
Yaoyao Bian	36121296	Pharm Biol	WB
Fahad Mubariz	37332877	Front Neurosci	WB

## Storage

Storage:

Store at -20°C. Stable for one year after shipment.

Storage Buffer:

PBS with 0.02% sodium azide and 50% glycerol pH 7.3.

Aliquoting is unnecessary for -20°C storage

\*\*\* 20ul sizes contain 0.1% BSA

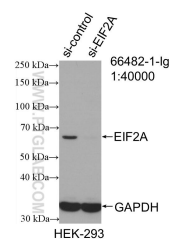
For technical support and original validation data for this product please contact:

T: 1 (888) 4PTGLAB (1-888-478-4522) (toll free in USA), or 1(312) 455-8498 (outside USA)

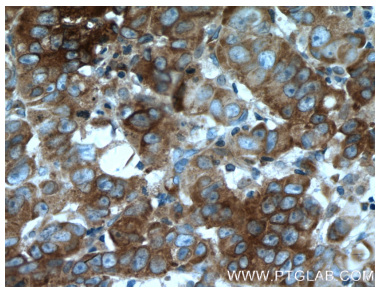
E: proteintech@ptglab.com  
W: ptglab.com

This product is exclusively available under Proteintech Group brand and is not available to purchase from any other manufacturer.

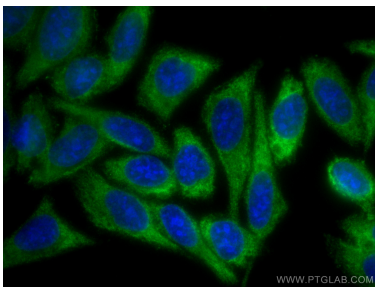
Selected Validation Data



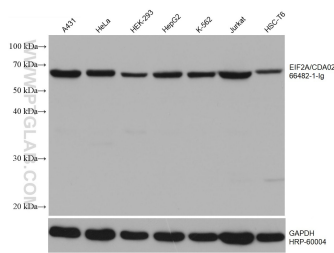
WB result of EIF2A/CDA02 antibody (66482-1-Ig; 1:40000; incubated at room temperature for 1.5 hours) with sh-Control and sh-EIF2A/CDA02 transfected HEK-293 cells.



Immunohistochemical analysis of paraffin-embedded human prostate cancer tissue slide using 66482-1-Ig (EIF2A antibody) at dilution of 1:300 (under 40x lens. Heat mediated antigen retrieval with Tris-EDTA buffer (pH 9.0).



Immunofluorescent analysis of (-20°C Methanol) fixed HepG2 cells using EIF2A/CDA02 antibody (66482-1-Ig, Clone: 1G7H4 ) at dilution of 1:400 and CoraLite®488-Conjugated AffiniPure Goat Anti-Mouse IgG(H+L).



Various lysates were subjected to SDS PAGE followed by western blot with 66482-1-Ig (EIF2A/CDA02 antibody) at dilution of 1:10000 incubated at room temperature for 1.5 hours. The membrane was stripped and reblotted with HRP-conjugated GAPDH Monoclonal antibody (HRP-60004) as loading control.