

For Research Use Only

human IgM Monoclonal antibody

Catalog Number: 66484-1-Ig **4 Publications**



Basic Information

Catalog Number:	66484-1-Ig	GenBank Accession Number:	BC009851	Purification Method:	Protein G purification
Size:	150ul , Concentration: 1500 ug/ml by Nanodrop;	GeneID (NCBI):	3507	CloneNo.:	2D10B10
Source:	Mouse	Full Name:	immunoglobulin heavy constant mu	Recommended Dilutions:	WB: 1:5000-1:20000
Isotype:	IgG1	Calculated MW:	69 kDa	IHC:	1:2000-1:6000
Immunogen Catalog Number:	AG1459	Observed MW:	75 kDa	IF-P:	1:200-1:800

Applications

Tested Applications:	WB, IHC, IF-P, ELISA	Positive Controls:	
Cited Applications:	WB, IHC, IF	WB :	Human plasma tissue,
Species Specificity:	human	IHC :	human tonsillitis tissue, human lymphoma tissue
Cited Species:	human	IF-P :	human tonsillitis tissue, human appendicitis tissue
Note-IHC: suggested antigen retrieval with TE buffer pH 9.0; (*) Alternatively, antigen retrieval may be performed with citrate buffer pH 6.0			

Background Information

IGHM is the constant region of heavy chain of IgM. IgM is the first immunoglobulin expressed during B cell development. IgM antibodies play an important role in primary immune response involved in early recognition of external invaders like bacteria and viruses, cellular waste and modified self, as well as in recognition and elimination of precancerous and cancerous lesions. The μ heavy chain disease is a rare lymphoproliferative disorder. Human immunoglobulin heavy chain locus translocations are associated with leukaemias and lymphomas, including multiple myeloma, mantle cell lymphoma, Burkitt's lymphoma and diffuse large B cell lymphoma. This antibody detects the heavy chain of human IgM (~75 kDa).

Notable Publications

Author	Pubmed ID	Journal	Application
Han Liu	36106364	Adv Sci (Weinh)	IF
Anne Kathrin Wessig	35296708	Sci Rep	WB
Kai Huang	40070366	Genes Dis	IF

Storage

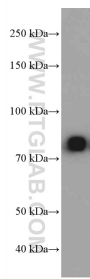
Storage:
Store at -20°C. Stable for one year after shipment.
Storage Buffer:
PBS with 0.02% sodium azide and 50% glycerol, pH7.3
Aliquoting is unnecessary for -20°C storage

*** 20ul sizes contain 0.1% BSA

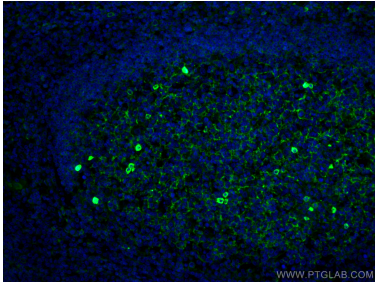
For technical support and original validation data for this product please contact:
T: 1 (888) 4PTGLAB (1-888-478-4522) (toll free in USA), or 1(312) 455-8498 (outside USA)
E: proteintech@ptglab.com
W: ptglab.com

This product is exclusively available under Proteintech Group brand and is not available to purchase from any other manufacturer.

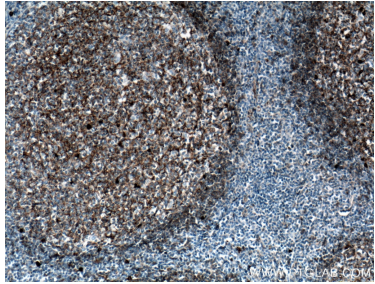
Selected Validation Data



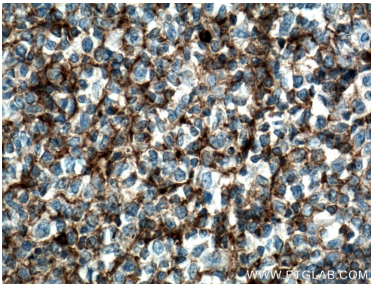
0.1 μ L human plasma was subjected to SDS PAGE followed by western blot with 66484-1-Ig (IGHM antibody) at dilution of 1:10000 incubated at room temperature for 1.5 hours.



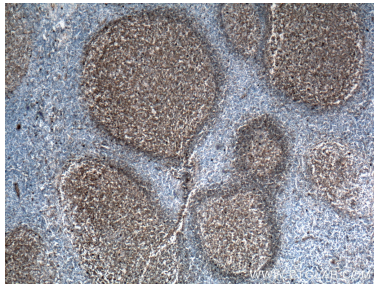
Immunofluorescent analysis of (4% PFA) fixed human tonsillitis tissue using human IgM antibody (66484-1-Ig, Clone: 2D10B10) at dilution of 1:400 and CoraLite®488-Conjugated AffiniPure Goat Anti-Mouse IgG(H+L).



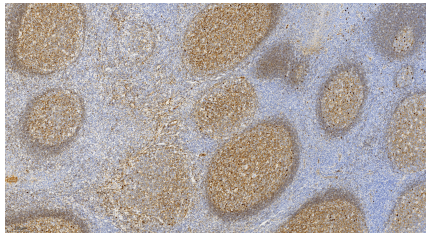
Immunohistochemical analysis of paraffin-embedded human tonsillitis tissue slide using 66484-1-Ig (IGHM antibody) at dilution of 1:1000 (under 10x lens. Heat mediated antigen retrieval with Tris-EDTA buffer (pH 9.0).



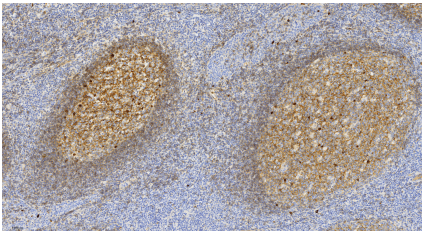
Immunohistochemical analysis of paraffin-embedded human tonsillitis tissue slide using 66484-1-Ig (IGHM antibody) at dilution of 1:1000 (under 40x lens. Heat mediated antigen retrieval with Tris-EDTA buffer (pH 9.0).



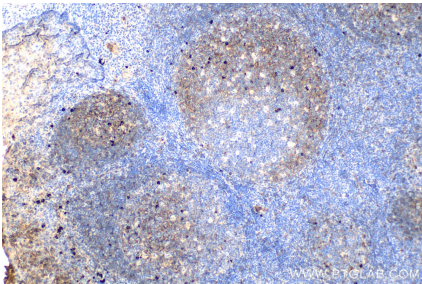
Immunohistochemical analysis of paraffin-embedded human tonsillitis tissue slide using 66484-1-Ig (IGHM antibody) at dilution of 1:1000 (under 4x lens. Heat mediated antigen retrieval with Tris-EDTA buffer (pH 9.0).



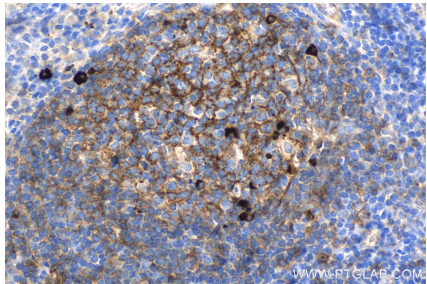
Immunohistochemical analysis of paraffin-embedded human tonsillitis tissue slide using 66484-1-Ig (human IgM antibody) at dilution of 1:3200 (under 10x lens). Heat mediated antigen retrieval with Tris-EDTA buffer (pH 9.0).



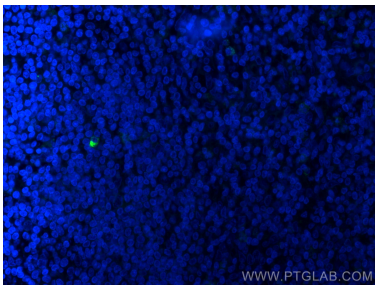
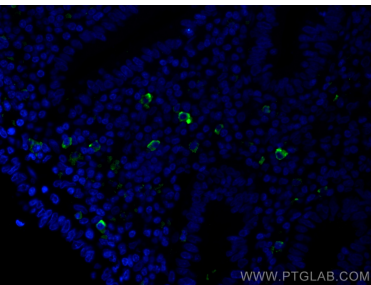
Immunohistochemical analysis of paraffin-embedded human tonsillitis tissue slide using 66484-1-Ig (human IgM antibody) at dilution of 1:3200 (under 20x lens). Heat mediated antigen retrieval with Tris-EDTA buffer (pH 9.0).



Immunohistochemical analysis of paraffin-embedded human tonsillitis tissue slide using 66484-1-Ig (human IgM antibody) at dilution of 1:200 (under 10x lens). Heat mediated antigen retrieval with Tris-EDTA buffer (pH 9.0).



Immunohistochemical analysis of paraffin-embedded human tonsillitis tissue slide using 66484-1-Ig (human IgM antibody) at dilution of 1:200 (under 40x lens). Heat mediated antigen retrieval with Tris-EDTA buffer (pH 9.0).



Immunofluorescent analysis of (4% PFA) fixed human appendicitis tissue using human IgM antibody (66484-1-Ig, Clone: 2D10B10) at dilution of 1:400 and CoraLite® 488-Conjugated AffiniPure Goat Anti-Mouse IgG(H+L).

Immunofluorescent analysis of (4% PFA) fixed paraffin-embedded human appendicitis tissue using human IgM antibody (66484-1-Ig, Clone: 2D10B10) at dilution of 1:400 and Multi-rAb CoraLite ® Plus 488-Goat Anti-Mouse Recombinant Secondary Antibody (H+L) (RGAM002). Heat mediated antigen retrieval with Tris-EDTA buffer (pH 9.0).