

For Research Use Only

CLTC Monoclonal antibody

Catalog Number: 66487-1-Ig

Featured Product

11 Publications



Basic Information

Catalog Number:

66487-1-Ig

Size:

150ul, Concentration: 1500 ug/ml by Nanodrop and 1000 ug/ml by Bradford method using BSA as the standard;

Source:

Mouse

Isotype:

IgG1

Immunogen Catalog Number:

AG25040

GenBank Accession Number:

BC054489

GeneID (NCBI):

1213

UNIPROT ID:

Q00610

Full Name:

clathrin, heavy chain (Hc)

Calculated MW:

192 kDa

Observed MW:

170 kDa

Purification Method:

Protein A purification

CloneNo.:

1B3D7

Recommended Dilutions:

WB 1:20000-1:100000

IHC 1:1000-1:4000

IF/ICC 1:400-1:1600

Applications

Tested Applications:

WB, IHC, IF/ICC, ELISA

Cited Applications:

WB, IF, CoIP

Species Specificity:

human, mouse, rat, pig, rabbit

Cited Species:

human, mouse, rat, pig, monkey, chicken

Note-IHC: suggested antigen retrieval with TE buffer pH 9.0; (*) Alternatively, antigen retrieval may be performed with citrate buffer pH 6.0

Positive Controls:

WB : LNCaP cells, HeLa cells, Raji cells, rat brain tissue, Jurkat cells, ROS1728 cells, pig brain tissue, HEK-293 cells, K-562 cells, rabbit brain tissue, mouse brain tissue

IHC : mouse kidney tissue, human breast cancer tissue

IF/ICC : HepG2 cells, HeLa cells

Background Information

Clathrin is the major protein of the polyhedral coat of coated pits and vesicles which entrap specific macromolecules during receptor-mediated endocytosis. The clathrin molecule has a triskelion shape. Each clathrin triskelion is composed of three identical heavy chains (CLTC) (160-190 kDa) and three light chains of two types, LCA (CLTA) and LCB (CLTB) (30-40 kDa). The heavy chain provides the structural backbone of the clathrin lattice. (PMID: 9133677)

Notable Publications

Author	Pubmed ID	Journal	Application
Nerea Ugidos	31620119	Front Immunol	WB
Ruihan Shi	33679671	Front Microbiol	WB
Myoung Sup Shim	39985671	Cell Mol Life Sci	IF

Storage

Storage:

Store at -20°C. Stable for one year after shipment.

Storage Buffer:

PBS with 0.02% sodium azide and 50% glycerol, pH7.3

Aliquoting is unnecessary for -20°C storage

*** 20ul sizes contain 0.1% BSA

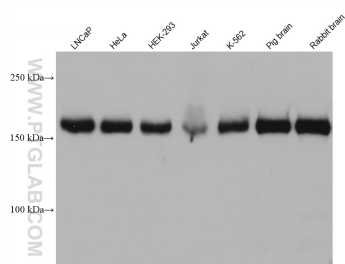
For technical support and original validation data for this product please contact:

T: 1 (888) 4PTGLAB (1-888-478-4522) (toll free in USA), or 1(312) 455-8498 (outside USA)

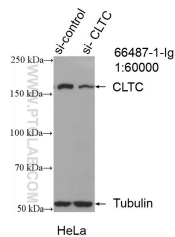
E: proteintech@ptglab.com
W: ptglab.com

This product is exclusively available under Proteintech Group brand and is not available to purchase from any other manufacturer.

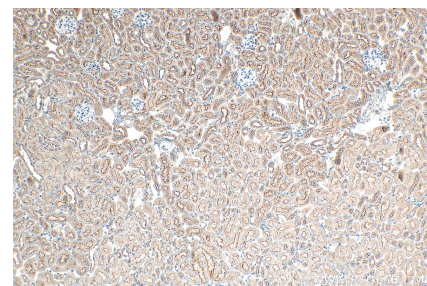
Selected Validation Data



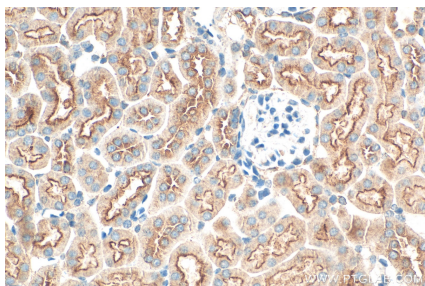
Various lysates were subjected to SDS PAGE followed by western blot with 66487-1-Ig (CLTC antibody) at dilution of 1:50000 incubated at room temperature for 1.5 hours.



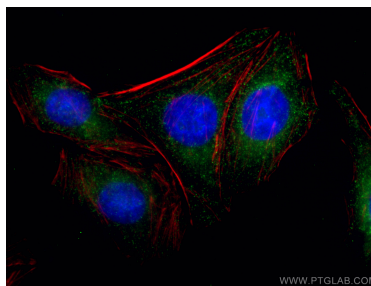
WB result of CLTC antibody (66487-1-Ig; 1:60000; incubated at room temperature for 1.5 hours) with sh-Control and sh-CLTC transfected HeLa cells.



Immunohistochemical analysis of paraffin-embedded mouse kidney tissue slide using 66487-1-Ig (CLTC antibody) at dilution of 1:2000 (under 10x lens). Heat mediated antigen retrieval with Tris-EDTA buffer (pH 9.0).



Immunohistochemical analysis of paraffin-embedded mouse kidney tissue slide using 66487-1-Ig (CLTC antibody) at dilution of 1:2000 (under 40x lens). Heat mediated antigen retrieval with Tris-EDTA buffer (pH 9.0).



Immunofluorescent analysis of (-20°C Ethanol) fixed HepG2 cells using CLTC antibody (66487-1-Ig; Clone: 1B3D7) at dilution of 1:800 and CoraLite® 488-Conjugated Goat Anti-Mouse IgG(H+L), CL594-Phalloidin (red).