

For Research Use Only

# NRG1, isoform SMDF Monoclonal antibody

Catalog Number: 66492-1-Ig **3 Publications**



## Basic Information

<b>Catalog Number:</b> 66492-1-Ig	<b>GenBank Accession Number:</b> BC007675	<b>Purification Method:</b> Protein A purification
<b>Size:</b> 150ul , Concentration: 1000 ug/ml by Bradford method using BSA as the standard;	<b>GeneID (NCBI):</b> 3084	<b>CloneNo.:</b> 2C6D12
<b>Source:</b> Mouse	<b>UNIPROT ID:</b> Q02297	<b>Recommended Dilutions:</b> WB 1:5000-1:50000 IF/ICC 1:200-1:800
<b>Isotype:</b> IgG1	<b>Full Name:</b> neuregulin 1	
<b>Immunogen Catalog Number:</b> AG0803	<b>Calculated MW:</b> 70 kDa	
	<b>Observed MW:</b> 70 kDa	

## Applications

<b>Tested Applications:</b> WB, IF/ICC, ELISA	<b>Positive Controls:</b> WB : rat brain tissue, HepG2 cells, pig cerebellum tissue, rat cerebellum tissue, mouse cerebellum tissue, mouse brain tissue, rabbit brain tissue
<b>Cited Applications:</b> WB, IF, IHC	
<b>Species Specificity:</b> Human, pig, mouse, rat, rabbit	
<b>Cited Species:</b> rat, mouse	IF/ICC : MCF-7 cells,

## Background Information

Neuregulin 1 (NRG1) is a trophic factor that has been implicated in neural development, neurotransmission, and synaptic plasticity. NRG1 has multiple isoforms that are generated by usage of different promoters and alternative splicing of a single gene. NRG1 and its receptor ErbB tyrosine kinase are expressed not only in the developing nervous system, but also in the adult brain. The antibody is specific to NRG1 isoform SMDF.

## Notable Publications

Author	Pubmed ID	Journal	Application
Jianxia Wen	32073745	J Cell Mol Med	IHC
Harisa Spahic	36613949	Int J Mol Sci	IF
Yanan Deng	38242426	Prog Neuropsychopharmacol Biol Psychiatry	WB,IF

## Storage

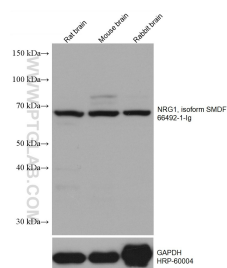
**Storage:**  
Store at -20°C. Stable for one year after shipment.  
**Storage Buffer:**  
PBS with 0.02% sodium azide and 50% glycerol pH 7.3.  
Aliquoting is unnecessary for -20°C storage

\*\*\* 20ul sizes contain 0.1% BSA

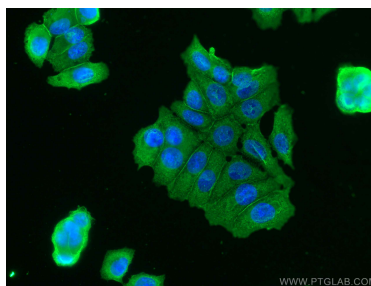
For technical support and original validation data for this product please contact:  
T: 1 (888) 4PTGLAB (1-888-478-4522) (toll free in USA), or 1(312) 455-8498 (outside USA)  
E: proteintech@ptglab.com  
W: ptglab.com

This product is exclusively available under Proteintech Group brand and is not available to purchase from any other manufacturer.

## Selected Validation Data



Various lysates were subjected to SDS PAGE followed by western blot with 66492-1-Ig (NRG1, isoform SMDF antibody) at dilution of 1:10000 incubated at room temperature for 1.5 hours. The membrane was stripped and reblotted with HRP-conjugated GAPDH Monoclonal antibody (HRP-60004) as loading control.



Immunofluorescent analysis of (-20°C Methanol) fixed MCF-7 cells using NRG1, isoform SMDF antibody (66492-1-Ig, Clone: 2C6D12 ) at dilution of 1:400 and CoraLite®488-Conjugated Goat Anti-Mouse IgG(H+L).