

For Research Use Only

# PCCB Monoclonal antibody

Catalog Number: 66501-1-Ig

Featured Product



## Basic Information

### Catalog Number:

66501-1-Ig

### Size:

150ul, Concentration: 1600 ug/ml by 5096  
Nanodrop and 1000 ug/ml by Bradford  
method using BSA as the standard;

### Source:

Mouse

### Isotype:

IgG1

### Immunogen Catalog Number:

AG1608

### GenBank Accession Number:

BC013768

### GeneID (NCBI):

5096

### UNIPROT ID:

P05166

### Full Name:

propionyl Coenzyme A carboxylase,  
beta polypeptide

### Calculated MW:

58 kDa

### Observed MW:

58 kDa

### Purification Method:

Protein G purification

### CloneNo.:

1A9A5

### Recommended Dilutions:

WB 1:5000-1:10000

IHC 1:150-1:600

IF-P 1:200-1:800

## Applications

### Tested Applications:

WB, IHC, IF-P, ELISA

### Species Specificity:

human, mouse, rat, pig

**Note-IHC: suggested antigen retrieval with  
TE buffer pH 9.0; (\*) Alternatively, antigen  
retrieval may be performed with citrate  
buffer pH 6.0**

### Positive Controls:

**WB** : Jurkat cells, human heart tissue, HepG2 cells,  
HSC-T6 cells, pig heart tissue, rat heart tissue, mouse  
liver tissue

**IHC** : human heart tissue,

**IF-P** : mouse kidney tissue, human kidney tissue

## Storage

### Storage:

Store at -20°C. Stable for one year after shipment.

### Storage Buffer:

PBS with 0.02% sodium azide and 50% glycerol pH 7.3.

Aliquoting is unnecessary for -20°C storage

\*\*\* 20ul sizes contain 0.1% BSA

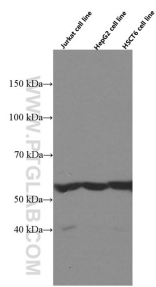
For technical support and original validation data for this product please contact:

T: 1 (888) 4PTGLAB (1-888-478-4522) (toll free  
in USA), or 1(312) 455-8498 (outside USA)

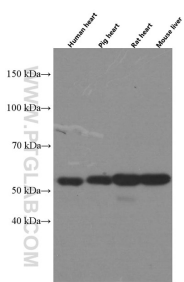
E: [proteintech@ptglab.com](mailto:proteintech@ptglab.com)  
W: [ptglab.com](http://ptglab.com)

This product is exclusively available under Proteintech  
Group brand and is not available to purchase from any  
other manufacturer.

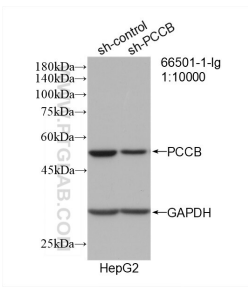
Selected Validation Data



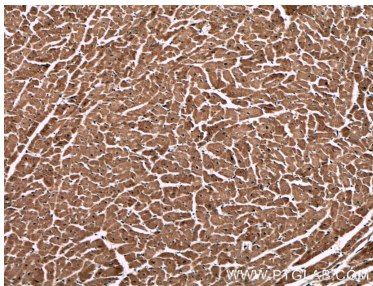
Various lysates were subjected to SDS PAGE followed by western blot with 66501-1-Ig (PCCB antibody) at dilution of 1:5000 incubated at room temperature for 1.5 hours.



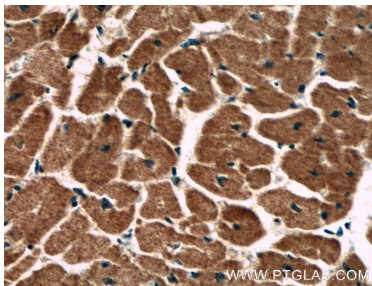
Various lysates were subjected to SDS PAGE followed by western blot with 66501-1-Ig (PCCB antibody) at dilution of 1:5000 incubated at room temperature for 1.5 hours.



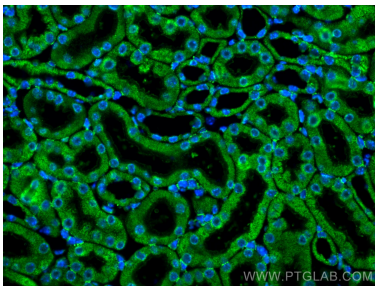
WB result of PCCB antibody (66501-1-Ig; 1:10000; incubated at room temperature for 1.5 hours) with sh-Control and sh-PCCB transfected HepG2 cells.



Immunohistochemical analysis of paraffin-embedded human heart tissue slide using 66501-1-Ig (PCCB antibody) at dilution of 1:300 (under 10x lens).



Immunohistochemical analysis of paraffin-embedded human heart tissue slide using 66501-1-Ig (PCCB antibody) at dilution of 1:300 (under 40x lens).



Immunofluorescent analysis of (4% PFA) fixed paraffin-embedded mouse kidney tissue using PCCB antibody (66501-1-Ig, Clone: 1A9A5 ) at dilution of 1:400 and CoraLite®488-Conjugated Goat Anti-Mouse IgG(H+L) (SA00013-1). Heat mediated antigen retrieval with Tris-EDTA buffer (pH 9.0).