

For Research Use Only

PCCB Monoclonal antibody

Catalog Number: 66501-1-Ig **Featured Product**



Basic Information

Catalog Number: 66501-1-Ig	GenBank Accession Number: BC013768	Purification Method: Protein G purification
Size: 150ul , Concentration: 1600 µg/ml by Nanodrop and 1000 µg/ml by Bradford method using BSA as the standard;	GeneID (NCBI): 5096	CloneNo.: 1A9A5
Source: Mouse	Full Name: propionyl Coenzyme A carboxylase, beta polypeptide	Recommended Dilutions: WB 1:5000-1:10000 IHC 1:150-1:600 IF 1:50-1:500
Isotype: IgG1	Calculated MW: 58 kDa	
Immunogen Catalog Number: AG1608	Observed MW: 58 kDa	

Applications

Tested Applications:

IF, IHC, WB, ELISA

Species Specificity:

pig, rat, mouse, human

**Note-IHC: suggested antigen retrieval with
TE buffer pH 9.0; (*) Alternatively, antigen
retrieval may be performed with citrate
buffer pH 6.0**

Positive Controls:

WB: Jurkat cells, human heart tissue, HepG2 cells,
HSC-T6 cells, pig heart tissue, rat heart tissue, mouse
liver tissue

IHC: human heart tissue,

IF: human kidney tissue,

Background Information

Storage

Storage:

Store at -20°C. Stable for one year after shipment.

Storage Buffer:

PBS with 0.02% sodium azide and 50% glycerol pH 7.3.

Aliquoting is unnecessary for -20°C storage

***** 20ul sizes contain 0.1% BSA**

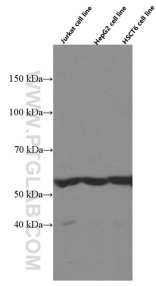
For technical support and original validation data for this product please contact:

T: 1 (888) 4PTGLAB (1-888-478-4522) (toll free
in USA), or 1(312) 455-8498 (outside USA)

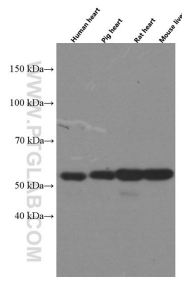
E: proteintech@ptglab.com
W: ptglab.com

**This product is exclusively available under Proteintech
Group brand and is not available to purchase from any
other manufacturer.**

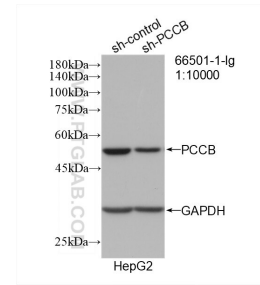
Selected Validation Data



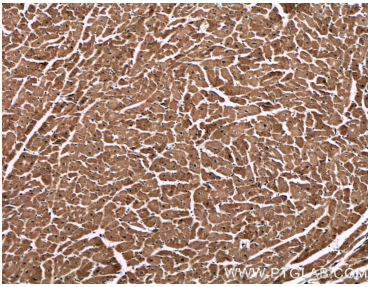
Various lysates were subjected to SDS PAGE followed by western blot with 66501-1-Ig (PCCB antibody) at dilution of 1:5000 incubated at room temperature for 1.5 hours.



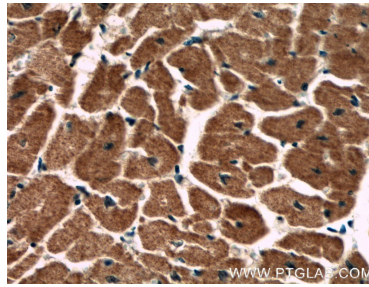
Various lysates were subjected to SDS PAGE followed by western blot with 66501-1-Ig (PCCB antibody) at dilution of 1:5000 incubated at room temperature for 1.5 hours.



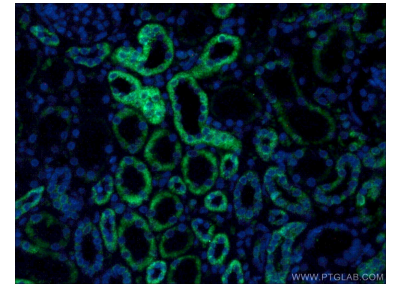
WB result of PCCB antibody (66501-1-Ig; 1:10000; incubated at room temperature for 1.5 hours) with sh-Control and sh-PCCB transfected HepG2 cells.



Immunohistochemical analysis of paraffin-embedded human heart tissue slide using 66501-1-Ig (PCCB antibody) at dilution of 1:300 (under 10x lens).



Immunohistochemical analysis of paraffin-embedded human heart tissue slide using 66501-1-Ig (PCCB antibody) at dilution of 1:300 (under 40x lens).



Immunofluorescent analysis of (4% PFA) fixed human kidney tissue using 66501-1-Ig (PCCB antibody) at dilution of 1:50 and Alexa Fluor 488-conjugated AffiniPure Goat Anti-Mouse IgG(H+L).