

For Research Use Only

# NRF2, NFE2L2 Monoclonal antibody

Catalog Number: 66504-1-Ig

Featured Product

118 Publications



## Basic Information

Catalog Number:

66504-1-Ig

Size:

150ul, Concentration: 1500 µg/ml by 4780  
Nanodrop and 1000 µg/ml by Bradford  
method using BSA as the standard;

Source:

Mouse

Isotype:

IgG2b

Immunogen Catalog Number:

AG9469

GenBank Accession Number:

BC011558

GeneID (NCBI):

4780

UNIPROT ID:

Q16236

Full Name:

nuclear factor (erythroid-derived 2)-  
like 2

Calculated MW:

605 aa, 68 kDa

Observed MW:

110 kDa

Purification Method:

Protein A purification

CloneNo.:

1E9E3

Recommended Dilutions:

WB: 1:1000-1:4000

## Applications

Tested Applications:

WB, ELISA

Cited Applications:

WB, IHC, IF, IP, CoIP, ChIP

Species Specificity:

Human

Cited Species:

human, mouse, rat, pig

Positive Controls:

WB: HeLa cells,

## Background Information

NRF2, also named as NFE2L2, belongs to the bZIP family and CNC subfamily. It is a transcription activator that binds to antioxidant response (ARE) elements in the promoter regions of target genes. NRF2 is important for the coordinated up-regulation of genes in response to oxidative stress. It may be involved in the transcriptional activation of genes of the beta-globin cluster by mediating enhancer activity of hypersensitive site 2 of the beta-globin locus control region. Nrf2 is a key player in the regulation of genes encoding for many antioxidative response enzymes. The expression of NRF2 may be induced under oxidative stress (PMID:14567983). In lung cancer, Nrf2 activation in malignant cells has been associated with tumor progression and chemotherapy resistance (PMID:20534738). Identifying patients with abnormal NRF2 expression may be important for selection for chemotherapy in NSCLC. As new investigators break into the emerging field of Nrf2 research, confusion regarding the correct migratory pattern of Nrf2 is causing doubts about the accuracy and reproducibility of published results. This letter provides solid evidence that the actually observed molecular weight of Nrf2 is about 70kDa and 95-110 kDa. (PMID: 22703241).

## Notable Publications

Author	Pubmed ID	Journal	Application
Jinliang Liu	34630847	Oxid Med Cell Longev	WB
Zi-Chao Wang	36163178	Cell Death Dis	WB
Lei Zhao	34582963	Food Chem Toxicol	WB

## Storage

Storage:

Store at -20°C. Stable for one year after shipment.

Storage Buffer:

PBS with 0.02% sodium azide and 50% glycerol, pH7.3

Aliquoting is unnecessary for -20°C storage

\*\*\* 20ul sizes contain 0.1% BSA

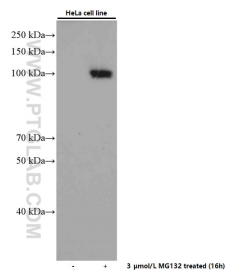
For technical support and original validation data for this product please contact:

T: 1 (888) 4PTGLAB (1-888-478-4522) (toll free  
in USA), or 1(312) 455-8498 (outside USA)

E: [proteintech@ptglab.com](mailto:proteintech@ptglab.com)  
W: [ptglab.com](http://ptglab.com)

This product is exclusively available under Proteintech Group brand and is not available to purchase from any other manufacturer.

## Selected Validation Data



Untreated and MG132 treated HeLa cells were subjected to SDS PAGE followed by western blot with 66504-1-Ig (NRF2, NFE2L2 antibody) at dilution of 1:2000 incubated at room temperature for 1.5 hours.