

For Research Use Only

MDH1 Monoclonal antibody

Catalog Number: 66505-1-Ig

Featured Product

2 Publications



Basic Information

Catalog Number:

66505-1-Ig

Size:

150ul, Concentration: 1300 ug/ml by

Nanodrop and 1000 ug/ml by Bradford

method using BSA as the standard;

Source:

Mouse

Isotype:

IgG1

Immunogen Catalog Number:

AG8744

GenBank Accession Number:

BC001484

GeneID (NCBI):

4190

UNIPROT ID:

P40925

Full Name:

malate dehydrogenase 1, NAD

(soluble)

Calculated MW:

334 aa, 36 kDa

Observed MW:

36-37 kDa

Purification Method:

Protein G purification

CloneNo.:

1F9A2

Recommended Dilutions:

WB 1:2000-1:10000

IHC 1:1000-1:4000

IF/ICC 1:50-1:500

Applications

Tested Applications:

WB, IHC, IF/ICC, FC (Intra), ELISA

Cited Applications:

WB, IP

Species Specificity:

human, mouse, rat

Cited Species:

human, mouse

Note-IHC: suggested antigen retrieval with TE buffer pH 9.0; (*) Alternatively, antigen retrieval may be performed with citrate buffer pH 6.0

Positive Controls:

WB : HeLa cells, HEK-293 cells, NIH/3T3 cells, RAW 264.7 cells, Jurkat cells

IHC : rat heart tissue,

IF/ICC : HepG2 cells,

Background Information

MDH1 (Malate dehydrogenase, cytoplasmic) is also named as MDHA and belongs to the LDH/MDH superfamily and MDH type 2 family which catalyzes the reversible oxidation of malate to oxaloacetate, utilizing the NAD/NADH cofactor system in the citric acid cycle. It can exist as a dimer and the dimeric MDH1 is the mitochondrial isoenzyme, whereas the tetrameric MDH2 is the glycosomal isoenzyme. (PMID:10693743)

Notable Publications

Author	Pubmed ID	Journal	Application
Yuan Chen	39178178	J Proteome Res	WB
Yukun Wang	38172700	Cell Mol Biol Lett	IP

Storage

Storage:

Store at -20°C. Stable for one year after shipment.

Storage Buffer:

PBS with 0.02% sodium azide and 50% glycerol pH 7.3.

Aliquoting is unnecessary for -20°C storage

*** 20ul sizes contain 0.1% BSA

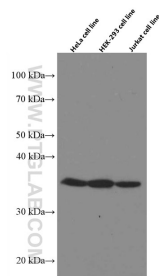
For technical support and original validation data for this product please contact:

T: 1 (888) 4PTGLAB (1-888-478-4522) (toll free in USA), or 1(312) 455-8498 (outside USA)

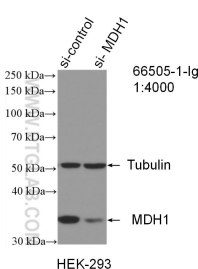
E: proteintech@ptglab.com
W: ptglab.com

This product is exclusively available under Proteintech Group brand and is not available to purchase from any other manufacturer.

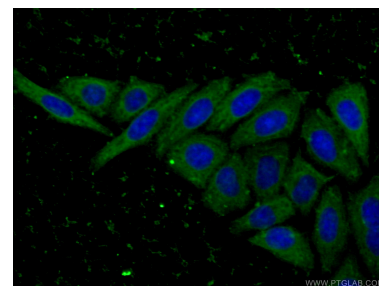
Selected Validation Data



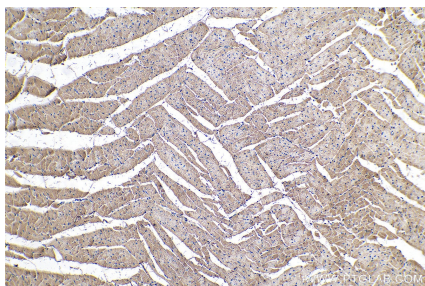
Various lysates were subjected to SDS PAGE followed by western blot with 66505-1-Ig (MDH1 antibody) at dilution of 1:5000 incubated at room temperature for 1.5 hours.



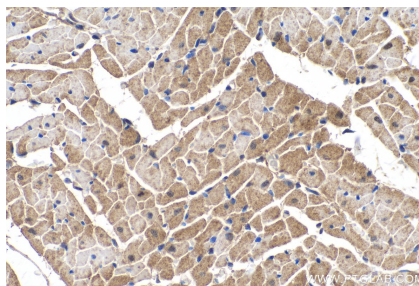
WB result of MDH1 antibody (66505-1-Ig; 1:4000; incubated at room temperature for 1.5 hours) with sh-Control and sh-MDH1 transfected HEK-293 cells.



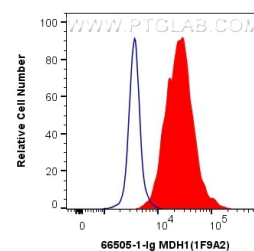
Immunofluorescent analysis of (-20°C Ethanol) fixed HepG2 cells using 66505-1-Ig (MDH1 antibody) at dilution of 1:100 and CoraLite488-Conjugated AffiniPure Goat Anti-Mouse IgG(H+L).



Immunohistochemical analysis of paraffin-embedded rat heart tissue slide using 66505-1-Ig (MDH1 antibody) at dilution of 1:2000 (under 10x lens). Heat mediated antigen retrieval with Tris-EDTA buffer (pH 9.0).



Immunohistochemical analysis of paraffin-embedded rat heart tissue slide using 66505-1-Ig (MDH1 antibody) at dilution of 1:2000 (under 40x lens). Heat mediated antigen retrieval with Tris-EDTA buffer (pH 9.0).



1X10⁶ HEK-293 cells were intracellularly stained with 0.4 ug Anti-Human MDH1 (66505-1-Ig, Clone:1F9A2) and CoraLite®488-Conjugated AffiniPure Goat Anti-Mouse IgG(H+L) at dilution 1:1000 (red), or 0.4 ug Mouse IgG1 Isotype Control (MOPC-21) (65124-1-Ig, Clone: MOPC-21) (blue). Cells were fixed with 4% PFA and permeabilized with Flow Cytometry Perm Buffer (PF00011-C).