

For Research Use Only

E2F1 Monoclonal antibody

Catalog Number: 66515-1-Ig

Featured Product

60 Publications



Basic Information

Catalog Number:

66515-1-Ig

Size:

150ul, Concentration: 1900 ug/ml by 1869
Nanodrop and 1000 ug/ml by Bradford
method using BSA as the standard;

Source:

Mouse

Isotype:

IgG2b

Immunogen Catalog Number:

AG17363

GenBank Accession Number:

BC050369

GeneID (NCBI):

1869

UNIPROT ID:

Q01094

Full Name:

E2F transcription factor 1

Calculated MW:

437 aa, 47 kDa

Observed MW:

55-60 kDa

Purification Method:

Protein A purification

CloneNo.:

5D7G8

Recommended Dilutions:

WB 1:1000-1:6000

Applications

Tested Applications:

WB, ELISA

Cited Applications:

WB, IHC, IF, IP, CoIP, ChIP

Species Specificity:

human, rat

Cited Species:

human, mouse, rat

Positive Controls:

WB : LNCaP cells, HepG2 cells, HeLa cells, HEK-293
cells, Jurkat cells, HSC-T6 cells

Background Information

Transcription factor E2F1 (E2F1), also known as RBBP3, is a transcription activator that binds DNA cooperatively with dp proteins through the E2 recognition site, 5'-TTTC[CG]CGC-3' found in the promoter region of a number of genes whose products are involved in cell cycle regulation or in DNA replication. The DRTF1/E2F complex functions in the control of cell-cycle progression from G1 to S phase. E2F-1 binds preferentially RB1 protein, in a cell-cycle dependent manner. It can mediate both cell proliferation and p53-dependent apoptosis. The calculated molecular weight of E2F1 is 47 kDa, but the sumoylated E2F1 is about 55-60 kDa.

Notable Publications

Author	Pubmed ID	Journal	Application
Chao Zhang	36093042	iScience	WB, CoIP
Peng Zhang	34659533	J Cancer	WB
Zhen Zhang	36119494	Front Oncol	WB, ChIP

Storage

Storage:

Store at -20°C. Stable for one year after shipment.

Storage Buffer:

PBS with 0.02% sodium azide and 50% glycerol, pH7.3

Aliquoting is unnecessary for -20°C storage

*** 20ul sizes contain 0.1% BSA

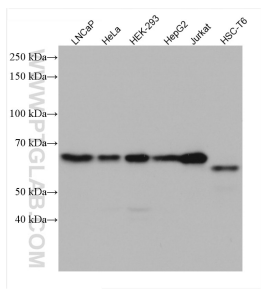
For technical support and original validation data for this product please contact:

T: 1 (888) 4PTGLAB (1-888-478-4522) (toll free
in USA), or 1(312) 455-8498 (outside USA)

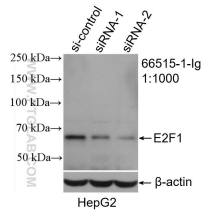
E: proteintech@ptglab.com
W: ptglab.com

This product is exclusively available under Proteintech
Group brand and is not available to purchase from any
other manufacturer.

Selected Validation Data



Various lysates were subjected to SDS PAGE followed by western blot with 66515-1-Ig (E2F1 antibody) at dilution of 1:3000 incubated at room temperature for 1.5 hours.



WB result of E2F1 antibody (66515-1-Ig; 1:1000; incubated at room temperature for 1.5 hours) with sh-Control and sh-E2F1 transfected HepG2 cells.