

For Research Use Only

# E2F1 Monoclonal antibody

Catalog Number: 66515-1-Ig

Featured Product

58 Publications



## Basic Information

**Catalog Number:**

66515-1-Ig

**GenBank Accession Number:**

BC050369

**Purification Method:**

Protein A purification

**Size:**

150ul, Concentration: 1900 ug/ml by Nanodrop and 1000 ug/ml by Bradford method using BSA as the standard;

**GeneID (NCBI):**

1869

**CloneNo.:**

5D7G8

**UNIPROT ID:**

Q01094

**Recommended Dilutions:**

WB 1:1000-1:6000

**Source:**

Mouse

**Full Name:**

E2F transcription factor 1

**Isotype:**

IgG2b

**Calculated MW:**

437 aa, 47 kDa

**Immunogen Catalog Number:**

AG17363

**Observed MW:**

55-60 kDa

## Applications

**Tested Applications:**

WB, ELISA

**Positive Controls:**

WB : LNCaP cells, HepG2 cells, HeLa cells, HEK-293 cells, Jurkat cells, HSC-T6 cells

**Cited Applications:**

WB, IHC, IF, IP, CoIP, ChIP

**Species Specificity:**

human, rat

**Cited Species:**

human, mouse, rat

## Background Information

Transcription factor E2F1 (E2F1), also known as RBBP3, is a transcription activator that binds DNA cooperatively with dp proteins through the E2 recognition site, 5'-TTTC[CG]CGC-3' found in the promoter region of a number of genes whose products are involved in cell cycle regulation or in DNA replication. The DRTF1/E2F complex functions in the control of cell-cycle progression from G1 to S phase. E2F-1 binds preferentially RB1 protein, in a cell-cycle dependent manner. It can mediate both cell proliferation and p53-dependent apoptosis. The calculated molecular weight of E2F1 is 47 kDa, but the sumoylated E2F1 is about 55-60 kDa.

## Notable Publications

Author	Pubmed ID	Journal	Application
Chao Zhang	36093042	iScience	WB, CoIP
Peng Zhang	34659533	J Cancer	WB
Zhen Zhang	36119494	Front Oncol	WB, ChIP

## Storage

**Storage:**

Store at -20°C. Stable for one year after shipment.

**Storage Buffer:**

PBS with 0.02% sodium azide and 50% glycerol pH 7.3.

Aliquoting is unnecessary for -20°C storage

\*\*\* 20ul sizes contain 0.1% BSA

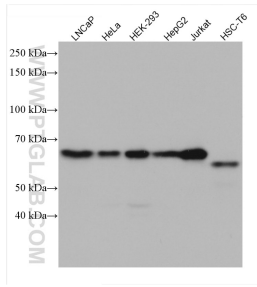
For technical support and original validation data for this product please contact:

T: 1 (888) 4PTGLAB (1-888-478-4522) (toll free in USA), or 1(312) 455-8498 (outside USA)

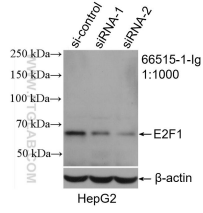
E: proteintech@ptglab.com  
W: ptglab.com

This product is exclusively available under Proteintech Group brand and is not available to purchase from any other manufacturer.

## Selected Validation Data



Various lysates were subjected to SDS PAGE followed by western blot with 66515-1-Ig (E2F1 antibody) at dilution of 1:3000 incubated at room temperature for 1.5 hours.



WB result of E2F1 antibody (66515-1-Ig; 1:1000; incubated at room temperature for 1.5 hours) with sh-Control and sh-E2F1 transfected HepG2 cells.