

For Research Use Only

# Recoverin Monoclonal antibody

Catalog Number: 66521-1-Ig **1 Publications**



## Basic Information

<b>Catalog Number:</b> 66521-1-Ig	<b>GenBank Accession Number:</b> BC001720	<b>Purification Method:</b> Protein G purification
<b>Size:</b> 150ul , Concentration: 1700 ug/ml by Nanodrop and 1000 ug/ml by Bradford method using BSA as the standard;	<b>GeneID (NCBI):</b> 5957	<b>CloneNo.:</b> 3B8E8
<b>Source:</b> Mouse	<b>Full Name:</b> recoverin	<b>Recommended Dilutions:</b> WB 1:2500-1:10000
<b>Isotype:</b> IgG1	<b>Calculated MW:</b> 24 kDa	
<b>Immunogen Catalog Number:</b> AG0119	<b>Observed MW:</b> 23 kDa	

## Applications

<b>Tested Applications:</b> WB, ELISA	<b>Positive Controls:</b> WB : pig retina tissue, rat retina tissue
<b>Cited Applications:</b> WB	
<b>Species Specificity:</b> Human, rat, pig, mouse	
<b>Cited Species:</b> human	

## Background Information

Recoverin, belonging to a family of the neuronal calcium sensor (NCS) proteins, has a restricted expression in retinal photoreceptors or neurons or neuroendocrine cells. It has been suggested to play a role in light and dark adaptation by regulating rhodopsin phosphorylation. Recently, it has been found that autoantibodies against recoverin (24 kDa) have been strongly associated with cancer-associated retinopathy (CAR) syndrome, a paraneoplastic disease of the retina. But functions of recoverin in cancer cells remain unknown.

## Notable Publications

Author	Pubmed ID	Journal	Application
Lisheng Chen	35882889	Sci Rep	WB

## Storage

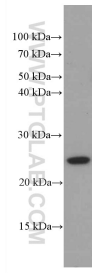
**Storage:**  
Store at -20°C. Stable for one year after shipment.  
**Storage Buffer:**  
PBS with 0.02% sodium azide and 50% glycerol pH 7.3.  
Aliquoting is unnecessary for -20°C storage

\*\*\* 20ul sizes contain 0.1% BSA

For technical support and original validation data for this product please contact:  
T: 1 (888) 4PTGLAB (1-888-478-4522) (toll free in USA), or 1(312) 455-8498 (outside USA)  
E: proteintech@ptglab.com  
W: ptglab.com

This product is exclusively available under Proteintech Group brand and is not available to purchase from any other manufacturer.

## Selected Validation Data



pig retina tissue were subjected to SDS PAGE followed by western blot with 66521-1-Ig (Recoverin antibody) at dilution of 1:5000 incubated at room temperature for 1.5 hours.