

For Research Use Only

# Recoverin Monoclonal antibody, PBS Only



Catalog Number: 66521-1-PBS

## Basic Information

<b>Catalog Number:</b> 66521-1-PBS	<b>GenBank Accession Number:</b> BC001720	<b>Purification Method:</b> Protein G purification
<b>Size:</b> 100ug , Concentration: 1 mg/ml by Nanodrop;	<b>GeneID (NCBI):</b> 5957	<b>CloneNo.:</b> 3B8E8
<b>Source:</b> Mouse	<b>UNIPROT ID:</b> P35243	
<b>Isotype:</b> IgG1	<b>Full Name:</b> recoverin	
<b>Immunogen Catalog Number:</b> AG0119	<b>Calculated MW:</b> 24 kDa	
	<b>Observed MW:</b> 23 kDa	

## Applications

**Tested Applications:**  
WB, Indirect ELISA

**Species Specificity:**  
Human, rat, pig, mouse

## Background Information

Recoverin, belonging to a family of the neuronal calcium sensor (NCS) proteins, has a restricted expression in retinal photoreceptors or neurons or neuroendocrine cells. It has been suggested to play a role in light and dark adaptation by regulating rhodopsin phosphorylation. Recently, it has been found that autoantibodies against recoverin (24 kDa) have been strongly associated with cancer-associated retinopathy (CAR) syndrome, a paraneoplastic disease of the retina. But functions of recoverin in cancer cells remain unknown.

## Storage

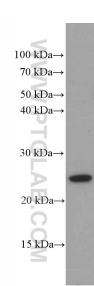
**Storage:**  
Store at -80°C.

**Storage Buffer:**  
PBS Only

For technical support and original validation data for this product please contact:  
T: 1 (888) 4PTGLAB (1-888-478-4522) (toll free in USA), or 1(312) 455-8498 (outside USA)  
E: [proteintech@ptglab.com](mailto:proteintech@ptglab.com)  
W: [ptglab.com](http://ptglab.com)

This product is exclusively available under Proteintech Group brand and is not available to purchase from any other manufacturer.

## Selected Validation Data



pig retina tissue were subjected to SDS PAGE followed by western blot with 66521-1-Ig (Recoverin antibody) at dilution of 1:5000 incubated at room temperature for 1.5 hours. This data was developed using the same antibody clone with 66521-1-PBS in a different storage buffer formulation.