

For Research Use Only

IDO1 Monoclonal antibody

Catalog Number: 66528-1-Ig **20 Publications**



Basic Information

Catalog Number: 66528-1-Ig	GenBank Accession Number: BC027882	Purification Method: Protein A purification
Size: 150ul , Concentration: 2000 ug/ml by Nanodrop and 1000 ug/ml by Bradford method using BSA as the standard;	GeneID (NCBI): 3620	CloneNo.: 3G2G11
Source: Mouse	UNIPROT ID: P14902	Recommended Dilutions: WB 1:5000-1:50000 IHC 1:400-1:2000 IF/ICC 1:400-1:2000
Isotype: IgG1	Full Name: indoleamine 2,3-dioxygenase 1	
Immunogen Catalog Number: AG3953	Calculated MW: 403 aa, 45 kDa	
	Observed MW: 42 kDa	

Applications

Tested Applications: WB, IHC, IF/ICC, ELISA	Positive Controls:
Cited Applications: WB, IHC, IF	WB : HeLa cells, HSC-T6 cells, 4T1 cells, IFN gamma treated HeLa cells
Species Specificity: human, mouse, rat	IHC : human tonsillitis tissue,
Cited Species: human, mouse, rat	IF/ICC : SKOV-3 cells,
Note-IHC: suggested antigen retrieval with TE buffer pH 9.0; (*) Alternatively, antigen retrieval may be performed with citrate buffer pH 6.0	

Background Information

IDO1 is the target for therapy in a range of clinical settings, including cancer, chronic infections, autoimmune and allergic syndromes, and transplantation. Elevated IDO1 expression is a hallmark of major viral infections including HIV, HBV, HCV or influenza and also of major bacteria infections, such as Tb, CAP, listeriosis and sepsis. Pathogens are able to hijack the immunosuppressive effects of IDO1 and make use of them to facilitate their own life cycle. MW of IDO1 is 40-42kd (PMID: 14502282; 17055065).

Notable Publications

Author	Pubmed ID	Journal	Application
Yuanhui Zhu	32926778	ACS Chem Neurosci	WB
Susu Lin	36169685	Psychopharmacology (Berl)	WB
Bo Zhang	31784933	Chin J Integr Med	WB

Storage

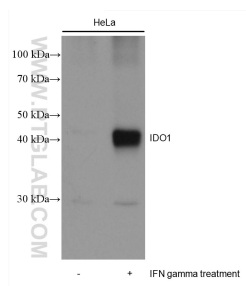
Storage:
Store at -20°C. Stable for one year after shipment.
Storage Buffer:
PBS with 0.02% sodium azide and 50% glycerol, pH7.3
Aliquoting is unnecessary for -20°C storage

*** 20ul sizes contain 0.1% BSA

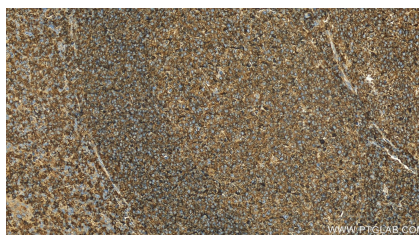
For technical support and original validation data for this product please contact:
T: 1 (888) 4PTGLAB (1-888-478-4522) (toll free in USA), or 1(312) 455-8498 (outside USA)
E: proteintech@ptglab.com
W: ptglab.com

This product is exclusively available under Proteintech Group brand and is not available to purchase from any other manufacturer.

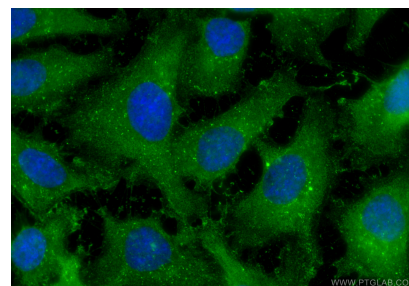
Selected Validation Data



Various lysates were subjected to SDS PAGE followed by western blot with 66528-1-Ig (IDO1 antibody) at dilution of 1:10000 incubated at room temperature for 1.5 hours.



Immunohistochemical analysis of paraffin-embedded human tonsillitis tissue slide using 66528-1-Ig (IDO1 antibody) at dilution of 1:2000 (under 20x lens). Heat mediated antigen retrieval with Tris-EDTA buffer (pH 9.0).



Immunofluorescent analysis of (-20°C Ethanol) fixed SKOV-3 cells using IDO1 antibody (66528-1-Ig, Clone: 3G2G11) at dilution of 1:400 and CoraLite®488-Conjugated Goat Anti-Mouse IgG(H+L) (SA00013-1).