

For Research Use Only

MRPL45 Monoclonal antibody

Catalog Number: **66531-1-Ig** **Featured Product**



Basic Information

Catalog Number: 66531-1-Ig	GenBank Accession Number: BC006235	Purification Method: Protein G purification
Size: 150ul , Concentration: 1600 ug/ml by Nanodrop and 900 ug/ml by Bradford method using BSA as the standard;	GeneID (NCBI): 84311	CloneNo.: 1B4B4
Source: Mouse	UNIPROT ID: Q9BRJ2	Recommended Dilutions: WB 1:2500-1:10000 IHC 1:250-1:1000
Isotype: IgG1	Full Name: mitochondrial ribosomal protein L45	
Immunogen Catalog Number: AG8207	Calculated MW: 35 kDa	
	Observed MW: 33 kDa	

Applications

Tested Applications: WB, IHC, ELISA	Positive Controls:
Species Specificity: Human, mouse, rat	WB : HeLa cells, HSC-T6 cells, RAW 264.7 cells, HEK-293 cells, Jurkat cells, HepG2 cells
Note-IHC: suggested antigen retrieval with TE buffer pH 9.0; (*) Alternatively, antigen retrieval may be performed with citrate buffer pH 6.0	IHC : human breast cancer tissue,

Background Information

Mammalian mitochondrial ribosomal proteins are encoded by nuclear genes and help in protein synthesis within the mitochondrion. Mitochondrial ribosomes (mitoribosomes) consist of a small 28S subunit and a large 39S subunit. MRPL45 is a 39S subunit protein.

Storage

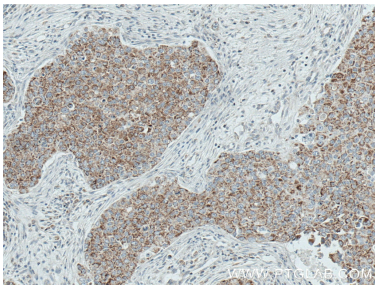
Storage:
Store at -20°C. Stable for one year after shipment.
Storage Buffer:
PBS with 0.02% sodium azide and 50% glycerol pH 7.3.
Aliquoting is unnecessary for -20°C storage

*** 20ul sizes contain 0.1% BSA

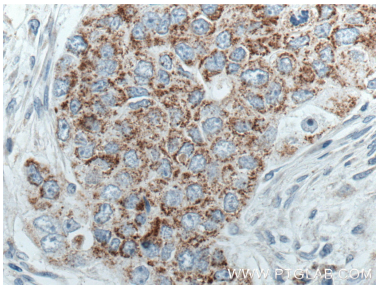
For technical support and original validation data for this product please contact:
T: 1 (888) 4PTGLAB (1-888-478-4522) (toll free in USA), or 1(312) 455-8498 (outside USA)
E: proteintech@ptglab.com
W: ptglab.com

This product is exclusively available under Proteintech Group brand and is not available to purchase from any other manufacturer.

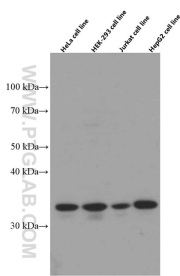
Selected Validation Data



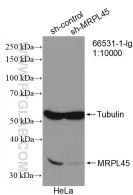
Immunohistochemical analysis of paraffin-embedded human breast cancer tissue slide using 66531-1-Ig (MRPL45 antibody) at dilution of 1:500 (under 10x lens. Heat mediated antigen retrieval with Tris-EDTA buffer (pH 9.0).



Immunohistochemical analysis of paraffin-embedded human breast cancer tissue slide using 66531-1-Ig (MRPL45 antibody) at dilution of 1:500 (under 40x lens. Heat mediated antigen retrieval with Tris-EDTA buffer (pH 9.0).



Various lysates were subjected to SDS PAGE followed by western blot with 66531-1-Ig (MRPL45 antibody) at dilution of 1:5000 incubated at room temperature for 1.5 hours.



WB result of MRPL45 antibody (66531-1-Ig; 1:10000; incubated at room temperature for 1.5 hours) with sh-Control and sh-MRPL45 transfected HeLa cells.