

For Research Use Only

# MRPL45 Monoclonal antibody, PBS Only



Catalog Number: 66531-1-PBS

Featured Product

## Basic Information

Catalog Number:

66531-1-PBS

Size:

100ug, Concentration: 1 mg/ml by Nanodrop;

Source:

Mouse

Isotype:

IgG1

Immunogen Catalog Number:

AG8207

GenBank Accession Number:

BC006235

GeneID (NCBI):

84311

UNIPROT ID:

Q9BRJ2

Full Name:

mitochondrial ribosomal protein L45

Calculated MW:

35 kDa

Observed MW:

33 kDa

Purification Method:

Protein G purification

CloneNo.:

1B4B4

## Applications

Tested Applications:

WB, IHC, Indirect ELISA

Species Specificity:

Human, mouse, rat

## Background Information

Mammalian mitochondrial ribosomal proteins are encoded by nuclear genes and help in protein synthesis within the mitochondrion. Mitochondrial ribosomes (mitoribosomes) consist of a small 28S subunit and a large 39S subunit. MRPL45 is a 39S subunit protein.

## Storage

Storage:

Store at -80°C.

Storage Buffer:

PBS Only

For technical support and original validation data for this product please contact:

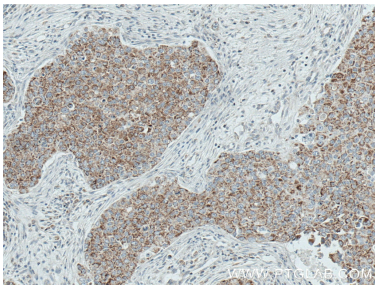
T: 1 (888) 4PTGLAB (1-888-478-4522) (toll free in USA), or 1(312) 455-8498 (outside USA)

E: [proteintech@ptglab.com](mailto:proteintech@ptglab.com)

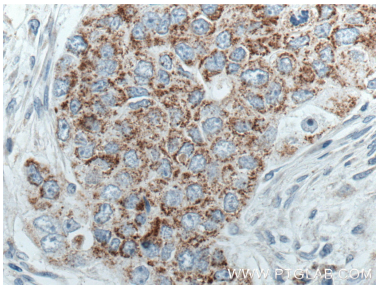
W: [ptglab.com](http://ptglab.com)

This product is exclusively available under Proteintech Group brand and is not available to purchase from any other manufacturer.

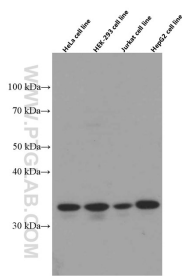
Selected Validation Data



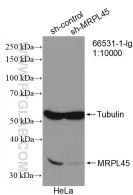
Immunohistochemical analysis of paraffin-embedded human breast cancer tissue slide using 66531-1-Ig (MRPL45 antibody) at dilution of 1:500 (under 10x lens. Heat mediated antigen retrieval with Tris-EDTA buffer (pH 9.0). This data was developed using the same antibody clone with 66531-1-PBS in a different storage buffer formulation.



Immunohistochemical analysis of paraffin-embedded human breast cancer tissue slide using 66531-1-Ig (MRPL45 antibody) at dilution of 1:500 (under 40x lens. Heat mediated antigen retrieval with Tris-EDTA buffer (pH 9.0). This data was developed using the same antibody clone with 66531-1-PBS in a different storage buffer formulation.



Various lysates were subjected to SDS PAGE followed by western blot with 66531-1-Ig (MRPL45 antibody) at dilution of 1:5000 incubated at room temperature for 1.5 hours. This data was developed using the same antibody clone with 66531-1-PBS in a different storage buffer formulation.



WB result of MRPL45 antibody (66531-1-Ig; 1:10000; incubated at room temperature for 1.5 hours) with sh-Control and sh-MRPL45 transfected HeLa cells. This data was developed using the same antibody clone with 66531-1-PBS in a different storage buffer formulation.