

For Research Use Only

# EXOC3L2 Monoclonal antibody, PBS Only



Catalog Number: 66537-1-PBS

## Basic Information

<b>Catalog Number:</b> 66537-1-PBS	<b>GenBank Accession Number:</b> BC104947	<b>Purification Method:</b> Protein G purification
<b>Size:</b> 100ug , Concentration: 1 mg/ml by Nanodrop;	<b>GeneID (NCBI):</b> 90332	<b>CloneNo.:</b> 3C1C2
<b>Source:</b> Mouse	<b>UNIPROT ID:</b> Q2M3D2	
<b>Isotype:</b> IgG1	<b>Full Name:</b> exocyst complex component 3-like 2	
<b>Immunogen Catalog Number:</b> AG26912	<b>Calculated MW:</b> 46 kDa	
	<b>Observed MW:</b> 46 kDa	

## Applications

**Tested Applications:**  
WB, IF, Indirect ELISA

**Species Specificity:**  
Human

## Background Information

The exocyst is a protein complex that ensures spatial targeting of exocytotic vesicles to the plasma membrane. Exocyst complex component 3-like 2 (EXOC3L2) associates with the exocyst complex and mediates directional migration of endothelial cells (PMID: 21566143). The gene of human EXOC3L2 maps to chromosome 19q13.32 and encodes a deduced 409-amino acid protein with a calculated molecular mass of about 46 kDa. Mouse Exoc3l2 gene encodes an approximately 250-amino acid protein that lacks the N-terminal domain of human EXOC3L2. Mutations in EXOC3L2 gene may be associated with Alzheimer's disease.

## Storage

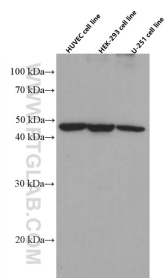
**Storage:**  
Store at -80°C.

**Storage Buffer:**  
PBS Only

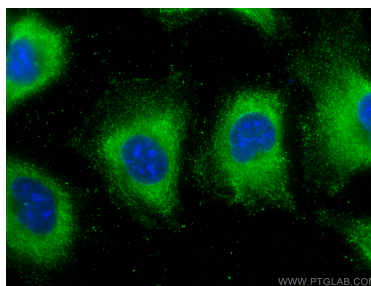
For technical support and original validation data for this product please contact:  
T: 1 (888) 4PTGLAB (1-888-478-4522) (toll free in USA), or 1(312) 455-8498 (outside USA)  
E: [proteintech@ptglab.com](mailto:proteintech@ptglab.com)  
W: [ptglab.com](http://ptglab.com)

This product is exclusively available under Proteintech Group brand and is not available to purchase from any other manufacturer.

## Selected Validation Data



HUVEC, HEK-293 and U-251 cells were subjected to SDS PAGE followed by western blot with 66537-1-Ig (EXOC3L2 antibody) at dilution of 1:3000 incubated at room temperature for 1.5 hours. This data was developed using the same antibody clone with 66537-1-PBS in a different storage buffer formulation.



Immunofluorescent analysis of (-20°C Methanol) fixed HUVEC cells using EXOC3L2 antibody (66537-1-Ig, Clone: 3C1C2 ) at dilution of 1:800 and CoraLite®488-Conjugated AffiniPure Goat Anti-Mouse IgG(H+L). This data was developed using the same antibody clone with 66537-1-PBS in a different storage buffer formulation.