

For Research Use Only

RYR1 Monoclonal antibody

Catalog Number: 66539-1-Ig 1 Publications



Basic Information

Catalog Number: 66539-1-Ig	GenBank Accession Number: NM_000540	Purification Method: Protein A purification
Size: 150ul , Concentration: 1800 ug/ml by Nanodrop and 1000 ug/ml by Bradford method using BSA as the standard;	GeneID (NCBI): 6261	CloneNo.: 1B4E12
Source: Mouse	UNIPROT ID: P21817	Recommended Dilutions: IHC 1:50-1:500 IF/ICC 1:150-1:600
Isotype: IgG1	Full Name: ryanodine receptor 1 (skeletal)	
Immunogen Catalog Number: AG25120	Calculated MW: 565 kDa	

Applications

Tested Applications: IHC, IF/ICC, ELISA	Positive Controls:
Cited Applications: IHC	IHC : mouse skeletal muscle tissue, mouse cerebellum tissue
Species Specificity: human, mouse	IF/ICC : A-673 cells,
Cited Species: mouse	
Note-IHC: suggested antigen retrieval with TE buffer pH 9.0; (*) Alternatively, antigen retrieval may be performed with citrate buffer pH 6.0	

Background Information

Ryanodine receptor isoform-1 (RyR1) is a major calcium channel in skeletal muscle important for excitation-contraction coupling. The transmembrane region of RyR1 is comprised of two domains including the pseudo voltage sensor domain and the pore-forming domain (PMID: 27855725). Dominant RyR1 mutations are the leading cause of MH. Studies on the Ca²⁺ conducting properties of RyR1 channels containing Malignant hyperthermia mutations expressed in myotubes.

Notable Publications

Author	Pubmed ID	Journal	Application
Hang Xiang	36790928	Cell Rep	IHC

Storage

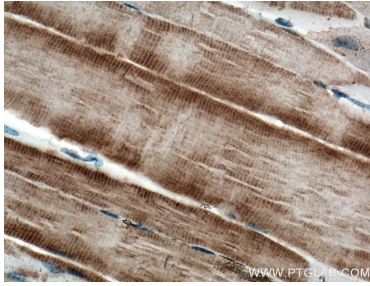
Storage:
Store at -20°C. Stable for one year after shipment.
Storage Buffer:
PBS with 0.02% sodium azide and 50% glycerol pH 7.3.
Aliquoting is unnecessary for -20°C storage

*** 20ul sizes contain 0.1% BSA

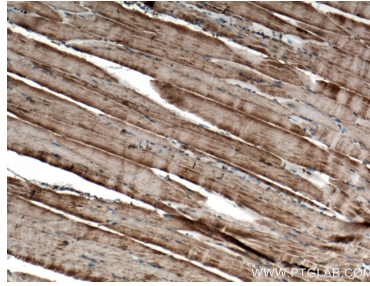
For technical support and original validation data for this product please contact:
T: 1 (888) 4PTGLAB (1-888-478-4522) (toll free in USA), or 1(312) 455-8498 (outside USA)
E: proteintech@ptglab.com
W: ptglab.com

This product is exclusively available under Proteintech Group brand and is not available to purchase from any other manufacturer.

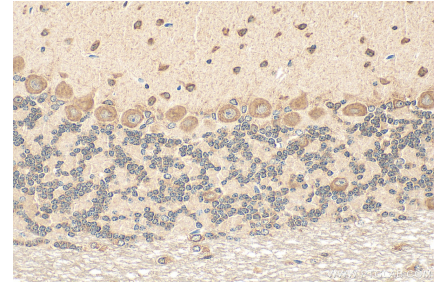
Selected Validation Data



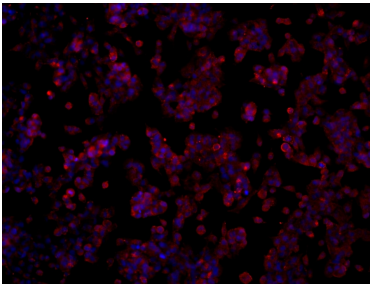
Immunohistochemical analysis of paraffin-embedded mouse skeletal muscle tissue slide using 66539-1-Ig (RYR1 antibody) at dilution of 1:200 (under 10x lens). Heat mediated antigen retrieval with Tris-EDTA buffer (pH 9.0).



Immunohistochemical analysis of paraffin-embedded mouse skeletal muscle tissue slide using 66539-1-Ig (RYR1 antibody) at dilution of 1:200 (under 40x lens). Heat mediated antigen retrieval with Tris-EDTA buffer (pH 9.0).



Immunohistochemical analysis of paraffin-embedded mouse cerebellum tissue slide using 66539-1-Ig (RYR1 antibody) at dilution of 1:200 (under 40x lens). Heat mediated antigen retrieval with Tris-EDTA buffer (pH 9.0).



Immunofluorescent analysis of (4% PFA) fixed A-673 cells using RYR1 antibody (66539-1-Ig, Clone: 1B4E12) at dilution of 1:300 and Multi-rAb CoraLite® Plus 594-Goat Anti-Mouse Recombinant Secondary Antibody (H+L) (Cat.NO. RGAM004).