

For Research Use Only

# RyR1 Monoclonal antibody, PBS Only

Catalog Number: 66539-1-PBS



## Basic Information

<b>Catalog Number:</b> 66539-1-PBS	<b>GenBank Accession Number:</b> NM_000540	<b>Purification Method:</b> Protein A purification
<b>Size:</b> 100ug , Concentration: 1 mg/ml by Nanodrop;	<b>GeneID (NCBI):</b> 6261	<b>CloneNo.:</b> 1B4E12
<b>Source:</b> Mouse	<b>Full Name:</b> ryanodine receptor 1 (skeletal)	
<b>Isotype:</b> IgG1	<b>Calculated MW:</b> 565 kDa	
<b>Immunogen Catalog Number:</b> AG25120		

## Applications

**Tested Applications:**  
IHC, Indirect ELISA

**Species Specificity:**  
Human, Mouse

## Background Information

Ryanodine receptor isoform-1 (RyR1) is a major calcium channel in skeletal muscle important for excitation-contraction coupling. The transmembrane region of RyR1 is comprised of two domains including the pseudo voltage sensor domain and the pore-forming domain (PMID: 27855725). Dominant RyR1 mutations are the leading cause of MH. Studies on the Ca<sup>2+</sup> conducting properties of RyR1 channels containing Malignant hyperthermia mutations expressed in myotubes.

## Storage

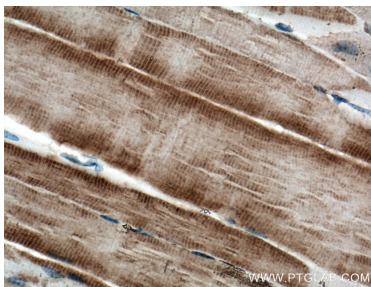
**Storage:**  
Store at -80°C.

**Storage Buffer:**  
PBS Only

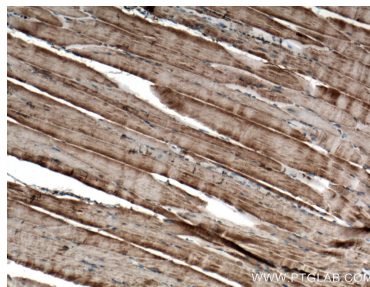
For technical support and original validation data for this product please contact:  
T: 1 (888) 4PTGLAB (1-888-478-4522) (toll free in USA), or 1(312) 455-8498 (outside USA)  
E: [proteintech@ptglab.com](mailto:proteintech@ptglab.com)  
W: [ptglab.com](http://ptglab.com)

This product is exclusively available under Proteintech Group brand and is not available to purchase from any other manufacturer.

## Selected Validation Data



Immunohistochemical analysis of paraffin-embedded mouse skeletal muscle tissue slide using 66539-1-Ig (RYR1 antibody) at dilution of 1:200 (under 10x lens. Heat mediated antigen retrieval with Tris-EDTA buffer (pH 9.0). This data was developed using the same antibody clone with 66539-1-PBS in a different storage buffer formulation.



Immunohistochemical analysis of paraffin-embedded mouse skeletal muscle tissue slide using 66539-1-Ig (RYR1 antibody) at dilution of 1:200 (under 40x lens. Heat mediated antigen retrieval with Tris-EDTA buffer (pH 9.0). This data was developed using the same antibody clone with 66539-1-PBS in a different storage buffer formulation.