

For Research Use Only

TOP2A Monoclonal antibody

Catalog Number: 66541-1-Ig

Featured Product

3 Publications



Basic Information

Catalog Number:

66541-1-Ig

Size:

150ul, Concentration: 2200 ug/ml by Nanodrop and 1000 ug/ml by Bradford method using BSA as the standard;

Source:

Mouse

Isotype:

IgG2a

Immunogen Catalog Number:

AG19551

GenBank Accession Number:

BC140791

GeneID (NCBI):

7153

UNIPROT ID:

P11388

Full Name:

topoisomerase (DNA) II alpha 170kDa

Calculated MW:

1531 aa, 174 kDa

Observed MW:

174 kDa

Purification Method:

Protein A purification

CloneNo.:

1E12B3

Recommended Dilutions:

WB 1:2500-1:10000

IHC 1:250-1:1000

IF/ICC 1:50-1:500

Applications

Tested Applications:

WB, IHC, IF/ICC, ELISA

Cited Applications:

WB, IHC

Species Specificity:

Human

Cited Species:

human

Note-IHC: suggested antigen retrieval with TE buffer pH 9.0; (*) Alternatively, antigen retrieval may be performed with citrate buffer pH 6.0

Positive Controls:

WB : HeLa cells, HepG2 cells, HEK-293 cells, L02 cells, Jurkat cells

IHC : human lung cancer tissue,

IF/ICC : HepG2 cells,

Background Information

TOP2A, also named as TOP2, belongs to the type II topoisomerase family. Topoisomerase II makes double-strand breaks. TOP2 control the topological states of DNA by transient breakage and subsequent rejoining of DNA strands. TOP2A may play a role in regulating the period length of ARNTL/BMAL1 transcriptional oscillation. DNA topoisomerase IIa (170 kDa, TOP2a/170) is essential in proliferating cells by resolving DNA topological entanglements during chromosome condensation, replication, and segregation.

Notable Publications

Author	Pubmed ID	Journal	Application
Huijia Fu	36138481	Reprod Biol Endocrinol	WB,IHC
Yufeng Zhang	35912241	Front Oncol	WB,IHC
Ke Wang	31816603	Aging (Albany NY)	IHC

Storage

Storage:

Store at -20°C. Stable for one year after shipment.

Storage Buffer:

PBS with 0.02% sodium azide and 50% glycerol pH 7.3.

Aliquoting is unnecessary for -20°C storage

*** 20ul sizes contain 0.1% BSA

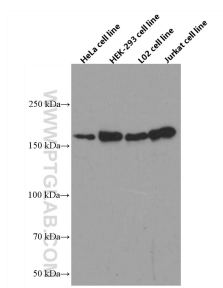
For technical support and original validation data for this product please contact:

T: 1 (888) 4PTGLAB (1-888-478-4522) (toll free in USA), or 1(312) 455-8498 (outside USA)

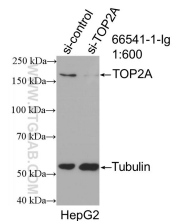
E: proteintech@ptglab.com
W: ptglab.com

This product is exclusively available under Proteintech Group brand and is not available to purchase from any other manufacturer.

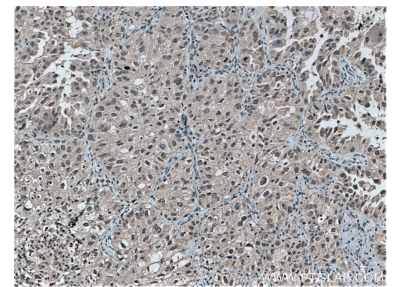
Selected Validation Data



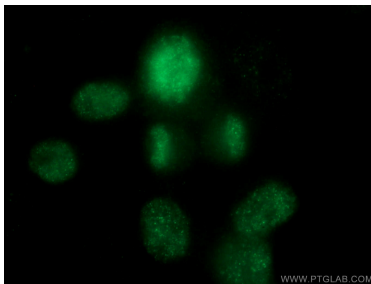
Various cells were subjected to SDS PAGE followed by western blot with 66541-1-Ig (TOP2A antibody) at dilution of 1:5000 incubated at room temperature for 1.5 hours.



WB result of TOP2A antibody (66541-1-Ig; 1:600; incubated at room temperature for 1.5 hours) with sh-Control and sh-TOP2A transfected HepG2 cells.



Immunohistochemical analysis of paraffin-embedded human lung cancer tissue slide using 66541-1-Ig (TOP2A antibody) at dilution of 1:500 (under 10x lens. Heat mediated antigen retrieval with Tris-EDTA buffer (pH 9.0).



Immunofluorescent analysis of (4% PFA) fixed HepG2 cells using 66541-1-Ig (TOP2A antibody) at dilution of 1:100 and Alexa Fluor 488-conjugated Goat Anti-Mouse IgG(H+L).