

For Research Use Only

# TOP2A Monoclonal antibody, PBS Only



Catalog Number: 66541-1-PBS

Featured Product

## Basic Information

Catalog Number:

66541-1-PBS

Size:

100ug, Concentration: 1 mg/ml by Nanodrop;

Source:

Mouse

Isotype:

IgG2a

Immunogen Catalog Number:

AG19551

GenBank Accession Number:

BC140791

GeneID (NCBI):

7153

UNIPROT ID:

P11388

Full Name:

topoisomerase (DNA) II alpha 170kDa

Calculated MW:

1531 aa, 174 kDa

Observed MW:

174 kDa

Purification Method:

Protein A purification

CloneNo.:

1E12B3

## Applications

Tested Applications:

WB, IF, IHC, Indirect ELISA

Species Specificity:

Human

## Background Information

TOP2A, also named as TOP2, belongs to the type II topoisomerase family. Topoisomerase II makes double-strand breaks. TOP2 control the topological states of DNA by transient breakage and subsequent rejoining of DNA strands. TOP2A may play a role in regulating the period length of ARNTL/BMAL1 transcriptional oscillation. DNA topoisomerase IIa (170 kDa, TOP2a/170) is essential in proliferating cells by resolving DNA topological entanglements during chromosome condensation, replication, and segregation.

## Storage

Storage:

Store at -80°C.

Storage Buffer:

PBS Only

For technical support and original validation data for this product please contact:

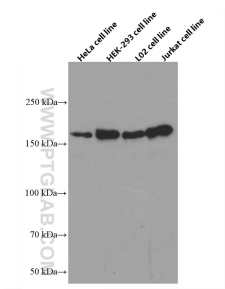
T: 1 (888) 4PTGLAB (1-888-478-4522) (toll free in USA), or 1(312) 455-8498 (outside USA)

E: [proteintech@ptglab.com](mailto:proteintech@ptglab.com)

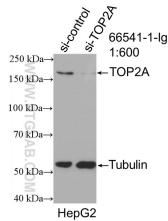
W: [ptglab.com](http://ptglab.com)

This product is exclusively available under Proteintech Group brand and is not available to purchase from any other manufacturer.

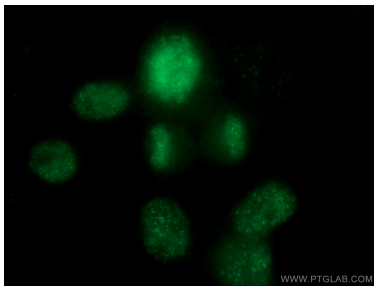
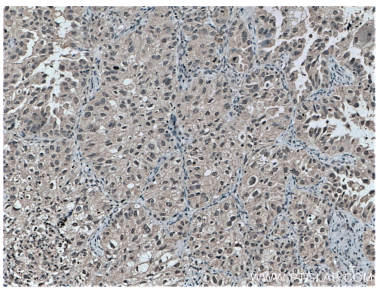
## Selected Validation Data



Various cells were subjected to SDS PAGE followed by western blot with 66541-1-Ig (TOP2A antibody) at dilution of 1:5000 incubated at room temperature for 1.5 hours. This data was developed using the same antibody clone with 66541-1-PBS in a different storage buffer formulation.



WB result of TOP2A antibody (66541-1-Ig; 1:600; incubated at room temperature for 1.5 hours) with sh-Control and sh-TOP2A transfected HepG2 cells. This data was developed using the same antibody clone with 66541-1-PBS in a different storage buffer formulation.



Immunofluorescent analysis of (4% PFA) fixed HepG2 cells using 66541-1-Ig (TOP2A antibody) at dilution of 1:100 and Alexa Fluor 488-conjugated AffiniPure Goat Anti-Mouse IgG(H+L). This data was developed using the same antibody clone with 66541-1-PBS in a different storage buffer formulation.