

For Research Use Only

# YME1L1 Monoclonal antibody

Catalog Number: 66551-1-Ig

Featured Product



## Basic Information

Catalog Number:

66551-1-Ig

Size:

150ul, Concentration: 1000 ug/ml by Nanodrop and 465 ug/ml by Bradford method using BSA as the standard;

Source:

Mouse

Isotype:

IgG1

Immunogen Catalog Number:

AG2069

GenBank Accession Number:

BC023507

GeneID (NCBI):

10730

UNIPROT ID:

Q96TA2

Full Name:

YME1-like 1 (S. cerevisiae)

Calculated MW:

716 aa, 80 kDa

Observed MW:

63 kDa

Purification Method:

Protein G purification

CloneNo.:

2B7E4

Recommended Dilutions:

WB 1:1000-1:6000

IHC 1:150-1:600

## Applications

Tested Applications:

WB, IHC, ELISA

Species Specificity:

Human, Rat, mouse

**Note-IHC: suggested antigen retrieval with TE buffer pH 9.0; (\*) Alternatively, antigen retrieval may be performed with citrate buffer pH 6.0**

Positive Controls:

WB : A549 cells, NIH/3T3 cells, HeLa cells, HEK-293 cells, MCF-7 cells, Jurkat cells, Raji cells, THP-1 cells, HSC-T6 cells

IHC : human kidney tissue,

## Background Information

YME1L1(ATP-dependent zinc metalloprotease) is also named as FTSH1, YME1L, Meg-4, PAMP. YME1L1 plays a phylogenetically conserved role in mitochondrial protein metabolism. It also ensures cell proliferation, maintains normal cristae morphology and complex I respiration activity, promotes antiapoptotic activity and protects mitochondria from the accumulation of oxidatively damaged membrane proteins. YME1L1 can prevent mitochondrial DNA inserting into nuclear. It has 3 isoforms produced by alternative splicing with the molecular weight of 86 kDa, 80 kDa and 76 kDa. This protein can migrate with a molecular weight of about 55-63 kDa, which is the size of the mature YME1L1 protein(PMID:22252130; 22354088).

## Storage

Storage:

Store at -20°C. Stable for one year after shipment.

Storage Buffer:

PBS with 0.02% sodium azide and 50% glycerol pH 7.3.

Aliquoting is unnecessary for -20°C storage

\*\*\* 20ul sizes contain 0.1% BSA

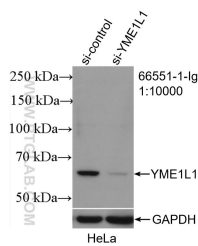
For technical support and original validation data for this product please contact:

T: 1 (888) 4PTGLAB (1-888-478-4522) (toll free in USA), or 1(312) 455-8498 (outside USA)

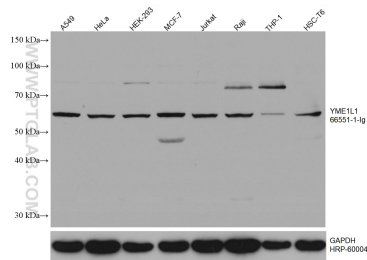
E: [proteintech@ptglab.com](mailto:proteintech@ptglab.com)  
W: [ptglab.com](http://ptglab.com)

This product is exclusively available under Proteintech Group brand and is not available to purchase from any other manufacturer.

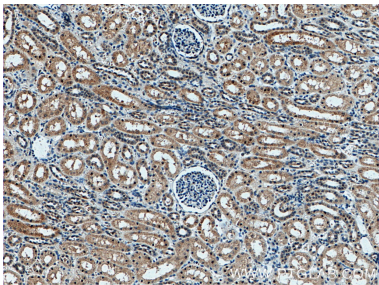
Selected Validation Data



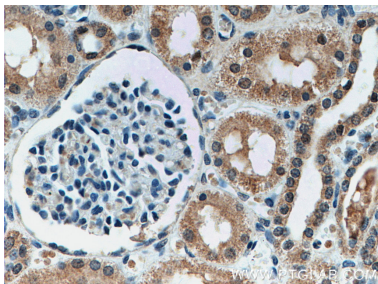
WB result of YME1L1 antibody (66551-1-Ig; 1:10000; incubated at room temperature for 1.5 hours) with sh-Control and sh-YME1L1 transfected HeLa cells.



Various lysates were subjected to SDS PAGE followed by western blot with 66551-1-Ig (YME1L1 antibody) at dilution of 1:3000 incubated at room temperature for 1.5 hours. The membrane was stripped and reblotted with HRP-conjugated GAPDH Monoclonal antibody (HRP-60004) as loading control.



Immunohistochemical analysis of paraffin-embedded human kidney tissue slide using 66551-1-Ig (YME1L1 antibody) at dilution of 1:300 (under 10x lens. Heat mediated antigen retrieval with Tris-EDTA buffer (pH 9.0).



Immunohistochemical analysis of paraffin-embedded human kidney tissue slide using 66551-1-Ig (YME1L1 antibody) at dilution of 1:300 (under 40x lens. Heat mediated antigen retrieval with Tris-EDTA buffer (pH 9.0).